



New European Bauhaus

NEBinar 2026! Welcome & Programme

*Sustainable, inclusive,
and
beautiful neighbourhood
transformation.*



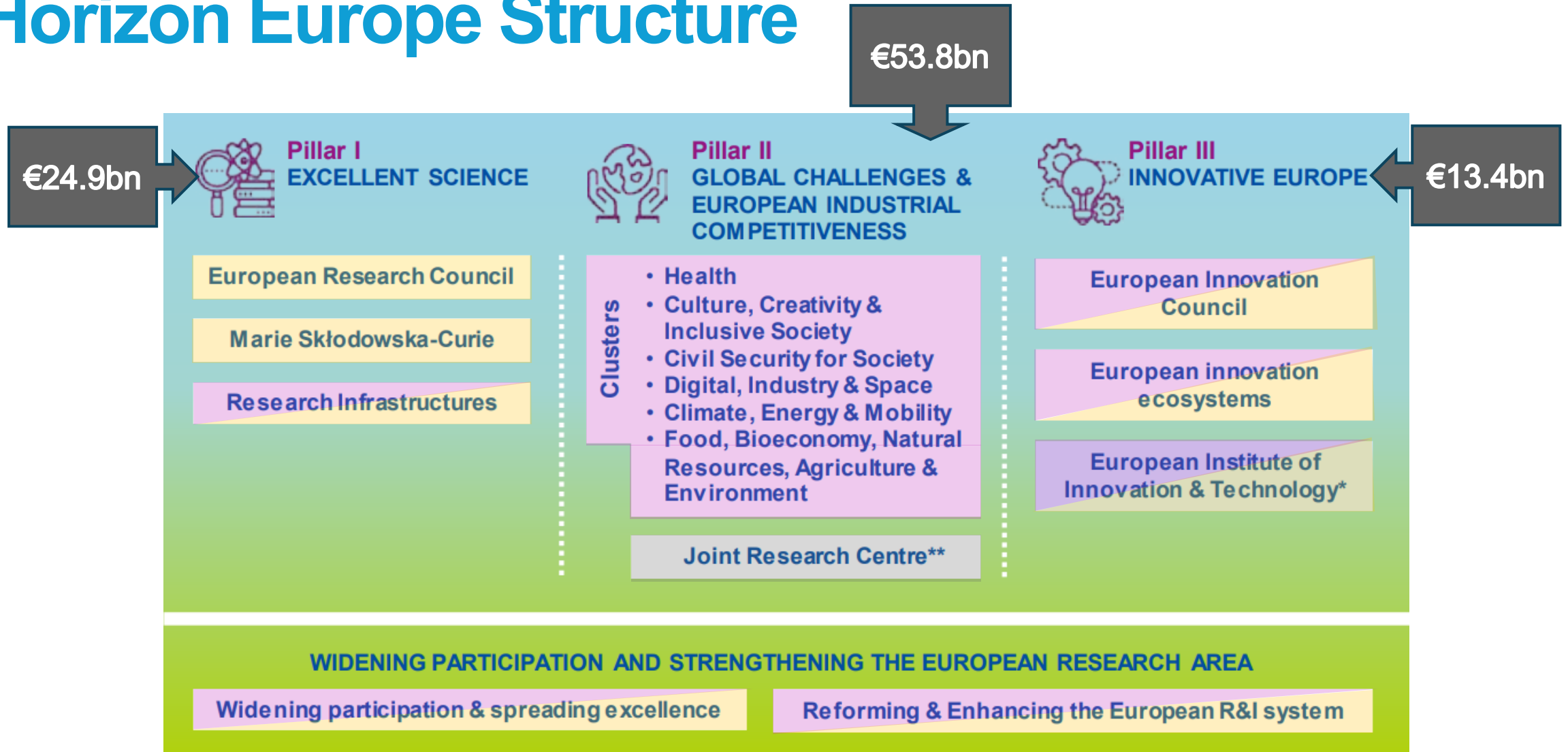
- 10.00-10.07 - **Hazel Dalgard UK National Contact Point for NEB** – Introduction
- 10.07-10.15 – **New European Bauhaus policy environment and R&I destinations** incl. SSH integration
- 10.15-10.30 - **Malin Finloef - City of Gothenburg - harbour community restoration initiatives**
Flytevi (Blue Urban Community Garden) and the Omstaellningslabbet.
- 10.30-10.50 – **New European Bauhaus** – presentation of all available call topics in 2026-2027
- 10.50-11.00 - Break
- 11.00- 11.15 - **Rebecca Sawcer, Waugh Thistleton Architects** – the *Timberhaus* project on circular construction
- 11.15 -11.25 - *Cinzia Porcedda, UK NCP* - **Mission Cities overview 2026-2027**
- 11.25-11.30 - Resources & conclusion

This **webinar** is being **recorded**

Please **use the Q&A function** - questions will be taken at the end of each presentation.

If you are **looking for consortium partners** feel free to **introduce yourself** in the **chat**.

Horizon Europe Structure



[2026-2027 Work Programmes](#), plus [2026 ERC](#) and [2026 EIC](#) Work Programmes
(Budgets shown are for 2021-2027, excluding Associated Country contributions)

Key:

- Open to all research and innovation fields
- Challenge driven – must solve the problem posed – not bottom-up idea driven

European industrial competitiveness

Impact Pathways guiding Horizon Europe

1. Creating high-quality new knowledge
2. Strengthening human capital in R&I
3. Fostering diffusion of knowledge and Open Science

**Scientific
Impact**



4. Addressing EU policy priorities & global challenges through R&I
5. Delivering benefits & impact via R&I missions
6. Strengthening the uptake of R&I in society

**Societal
Impact**



7. Generating innovation-based growth
8. Creating more and better jobs
9. Leveraging investments in R&I

**Economic
Impact**



National Contact Points

UK NEB NCP site including news & funding opportunities.



Horizon Europe Pillar II Cluster Key:

Cluster 1: Health
Cluster 2: Culture, Creativity and Inclusive Society
Cluster 3: Civil Security For Society
Cluster 4: Digital, Industry and Space
Cluster 5: Climate, Energy and Mobility
Cluster 6: Food security, Bioeconomy, Natural Resources, Agriculture and Environment



[National Contact Point contact details](#)



[National Contact Point Newsletters](#)

What does UK association mean?

- The UK is associated to Horizon Europe for calls in 2024 - 2027 Work Programmes
- UK participants can **fully participate** and be funded directly by the EC**
- UK organisations can **lead** and **coordinate** projects
- For **collaborative projects (consortia)** eligibility requires a **minimum of 3 legal entities from different Member States or Associated Countries, one must be from a Member State.**

***Exceptions:*

The European Innovation Council (EIC) Fund which manages the equity element of both the EIC Accelerator and STEP

If a particular call for proposals is limited in the Work Programme to EU Member States or certain other countries only



Evaluation criteria (RIAs and IAs)

Research and innovation action (RIA)

Activities to establish new knowledge or to explore the feasibility of a new or improved technology, product, process, service or solution.

This may include basic and applied research, technology development and integration, testing, demonstration and validation of a small-scale prototype in a laboratory or simulated environment.

Innovation action (IA)

Activities to produce plans and arrangements or designs for new, altered or improved products, processes or services.

These activities may include prototyping, testing, demonstrating, piloting, large-scale product validation and market replication.

EXCELLENCE

- ✓ Clarity and pertinence of the **project's objectives**, and the extent to which the proposed work is ambitious, and goes beyond the state-of-the-art.
- ✓ Soundness of the proposed **methodology**, including the underlying concepts, models, assumptions, interdisciplinary approaches, appropriate consideration of the **gender dimension** in research and innovation content, and the quality of **open science practices** including sharing and management of research outputs and engagement of citizens, civil society and end users where appropriate.

IMPACT¹

- ✓ Credibility of the **pathways** to achieve the expected **outcomes and impacts** specified in the work programme.
- ✓ Suitability and quality of the **measures to maximize expected outcomes and impacts**, as set out in the dissemination and exploitation plan, including communication activities.

QUALITY AND EFFICIENCY OF THE IMPLEMENTATION

- ✓ Quality and effectiveness of the **work plan**, assessment of risks, and appropriateness of the effort assigned to work packages, and the resources overall.
- ✓ Capacity and role of each **participant**, and extent to which the **consortium** as a whole brings together the necessary expertise.

Eco2Schools -integrating sustainability into the curriculum and using schools as hubs for sustainability transformation and education as well as being sustainable schools. [NEB|LAB ECO²-SCHOOLS](#)

Home [About NEB|LAB ECO²-SCHOOLS](#) Follow the Pilot Sites ▾ News ▾ Resources ▾

Get involved with the Lab

The pilot sites are:

1. University College Cork, Ireland
2. Eco³Campus Microville Durable, Grand Reims, France
3. Ciência Viva "Pavilhão do Conhecimento", Lisbon, Portugal
4. Sigtunaskolan Humanistiska Läroverket, Stockholm, Sweden
5. Ellinogermaniki Agogi, Athens, Greece



Roadmap to zero-energy and **energy positive educational buildings** leading the way to a fundamental shift: from buildings as *consumers* of energy to buildings as *producers* of energy.



New European Bauhaus

NEB – EU policy environment

■ NEB in the current political priorities



Two key policy strands



New European Bauhaus

Green Deal

- **European Green Deal, Climate Pact, European Climate Adaptation Strategy, Zero Pollution Action Plan, EU Biodiversity Strategy, Nature Restoration Regulation, EU Strategy on Green Infrastructure, Water Resilience Strategy.**
- **Clean Industrial deal**
 - **Energy security and decarbonisation**
 - Remanufacturing
 - Critical raw materials
 - Green upskilling including construction (NEBA Alliance)
- **Circular Economy Act 2026 and Action Plan**
- EU Bioeconomy Strategy, Renovation Wave, European Affordable Housing Plan, [Life cycle approaches in the BE](#)
- Parallel developments in digital/AI e.g. digital twins, sensors.
- **Other parts of Horizon Europe: missions; clusters e.g. energy (cluster 5) natural resources (cluster 6); specific partnerships (BE, CE).**

Democracy & culture

- **Union of equality**
- **European Pillar of Social Rights**
- **New European Agenda for Culture**
- **Davos Declaration 2018**
- New Leipzig Charter
- European Framework for Action on Cultural Heritage
- EU Intergenerational Fairness strategy
- **Other specific parts of Horizon Europe: clusters e.g. creative industries (cluster 2), specific partnerships e.g. cultural heritage.**

Three objectives of the Communication



Enhancing **circularity, sustainability** and **innovation in the built environment** by supporting the circular economy and bioeconomy, promoting research, scaling up innovative solutions and reinforcing community resilience to natural disasters.



Empowering citizens through **participatory processes** to strengthen **democratic, inclusive** and **resilient** neighbourhoods.



Harnessing the transformative **power of education, arts** and **culture** to boost creativity and innovation for local transformation.

[The future of the New European Bauhaus: An enabler for the clean transition and innovation - New European Bauhaus](#)

NEB in current political priorities: affordable housing

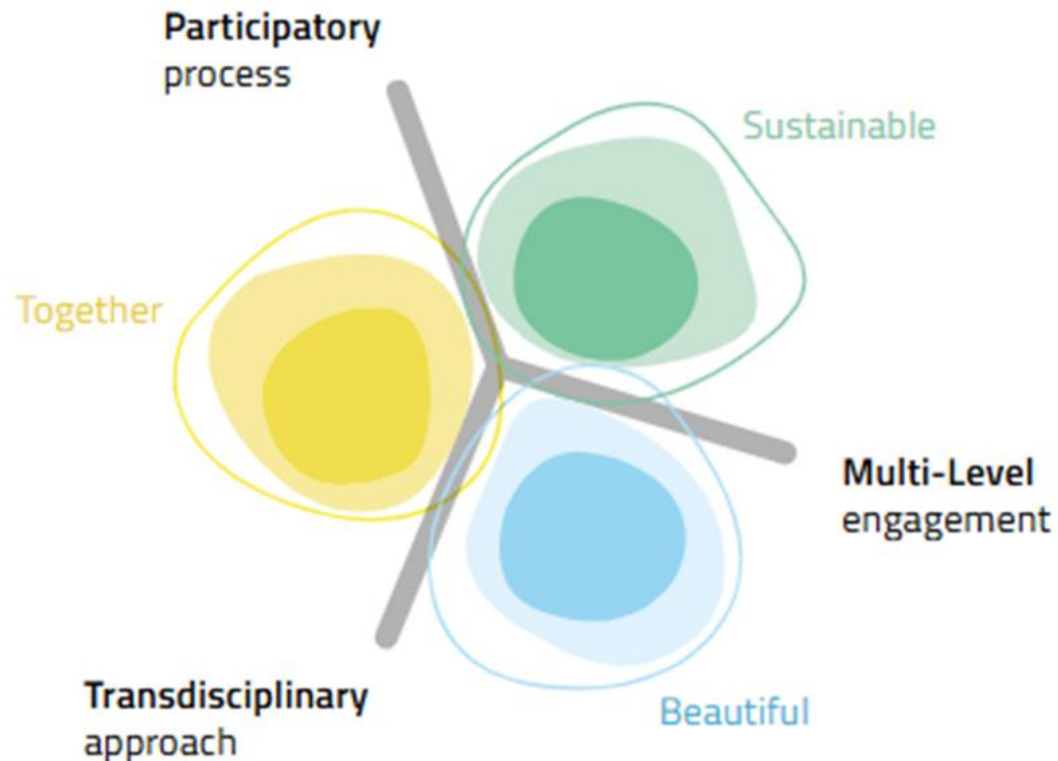
*“A home is not just four walls and a roof.
It is safety, warmth, a place for family and friends.*

*This is more than a housing crisis.
It is a social crisis.
It tears at Europe's social fabric.*

*Still this year we will present the first ever
European Affordable Housing Plan.
To make housing more affordable,
more sustainable, and of better quality.
It will be a European effort, anchored
in local realities.”*



NEB compass (values)



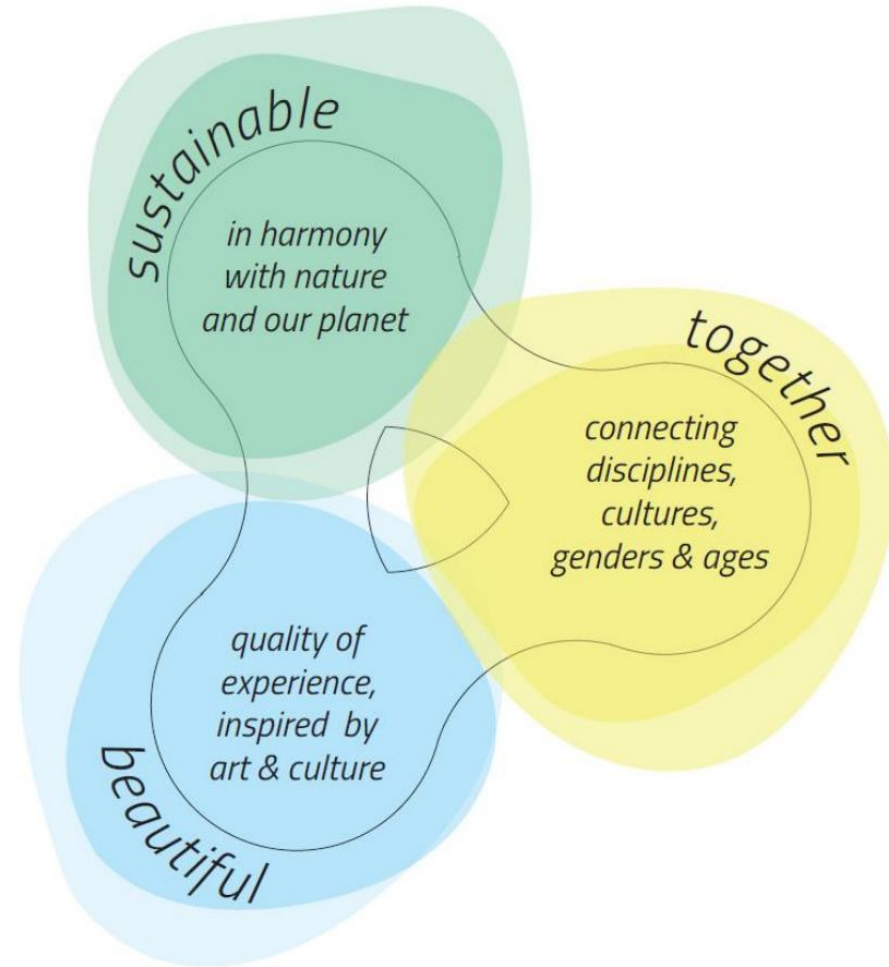
NEB working principles

- **NEB core values:** The commitment and the support of innovative solutions are rooted in the **three intertwined NEB values sustainable, inclusive and beautiful.**
- **NEB working principles** describe **the process through which a project should operate** and work to achieve the highest level of ambition in the three core values.
- A NEB project should embrace three working principles: **participatory process, multi-level engagement and transdisciplinary approach.**

Horizon Europe NEB Destinations

Three **R&I destinations (broad topics)**: *(starting points – NEB is wholistic!)*

1. Connecting the green transformation, **social inclusion and local democracy**
2. **Circular and regenerative approaches** for the **built environment**
3. **Innovative funding** and **new business models** for the transformation of neighbourhoods



NEB expanded compass values

Some **NEB-specific** considerations

- **Existing** or new buildings, public/private/mixed use, and indoor/outdoor spaces
- Scale – a building...up to... a district.
- **Rural, urban** and **peri-urban** environment/s (inc. coastal areas.)
- NEB is **place based** - number of sites or demonstrators envisaged, and does it specify a number of countries, or site types, or approaches?
- All projects are **transdisciplinary** and **must** address **sustainability, inclusivity and beauty.**
- **All projects are place based, bottom-up and co-designed WITH communities from the outset.**
- They therefore have both **unique local characteristics** AND the ability for elements or approaches from them to be **replicated/scaled elsewhere.**

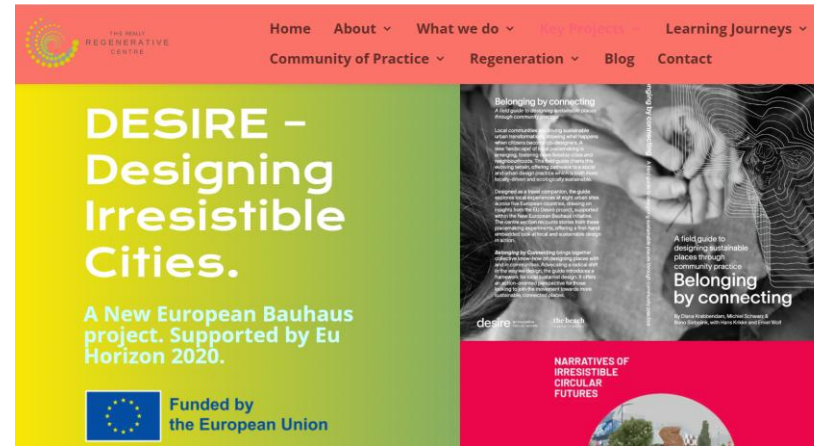
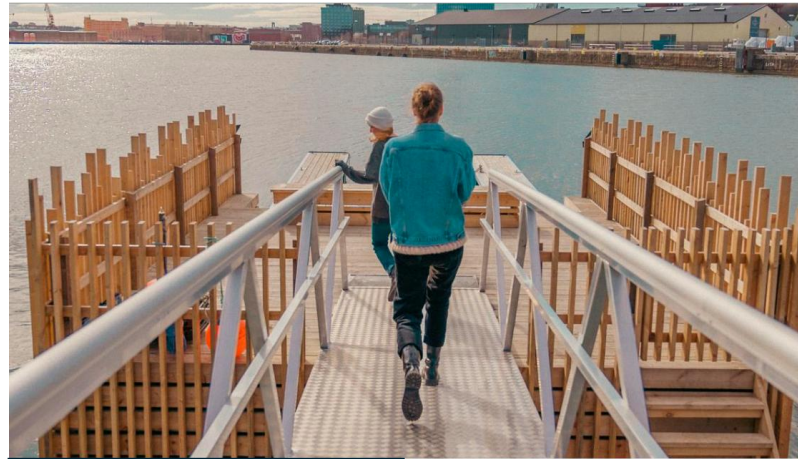
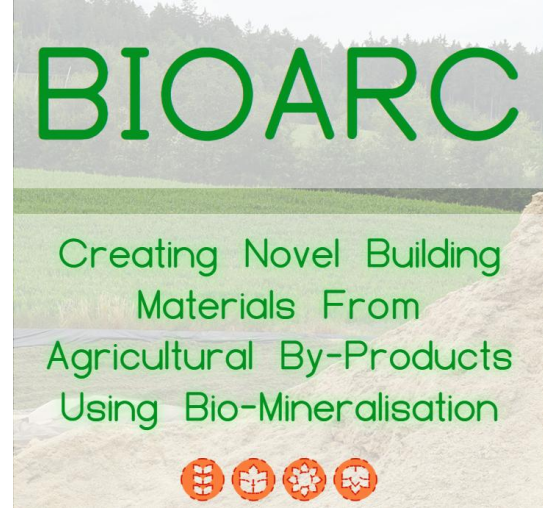


NEB projects and SSH integration

NEB Prizes - Reconnecting with Nature, Regaining a sense of belonging and Prioritising the Places and People that Need it the Most:

BIOARC - participatory approaches using agricultural waste to create nature-based construction materials.

NEB Prizes 2024 - Runner up - Flytevi (Blue Urban Community Gardening) - sense of identity, togetherness and belonging angle of NEB but has also regenerated waste land into community space.



- **DESIRE** - place based regeneration with a strongly participatory approach using design, systems and evolutionary approaches.

Photo credits
Gothenburg University
(Happy visuals; Marko T
Wramén



New European Bauhaus

NEB – All Horizon Europe calls in 2026 –2027

- [NEB Horizon Europe Work Programme 2026-2027](#)
- **Webinar - EC NEB Info Days 2026-** [NEB Facility 2026 Info Days](#)
- **2026 Call** = Beautiful, inclusive and sustainable neighbourhoods for communities- HORIZON-NEB-2026-01
- **Calls open - 05 May 2026** **Calls close -1 Dec 2026**
- **2027 Call** = Innovative models for neighbourhoods that integrate beauty, inclusiveness and sustainability - HORIZON-NEB-2027-01
- **Calls open- 05 May 2027** **Calls close - 1 Dec 2027**

*Horizon Europe - Work Programme 2026-2027
New European Bauhaus Facility*

EN

Annex XIII

Horizon Europe

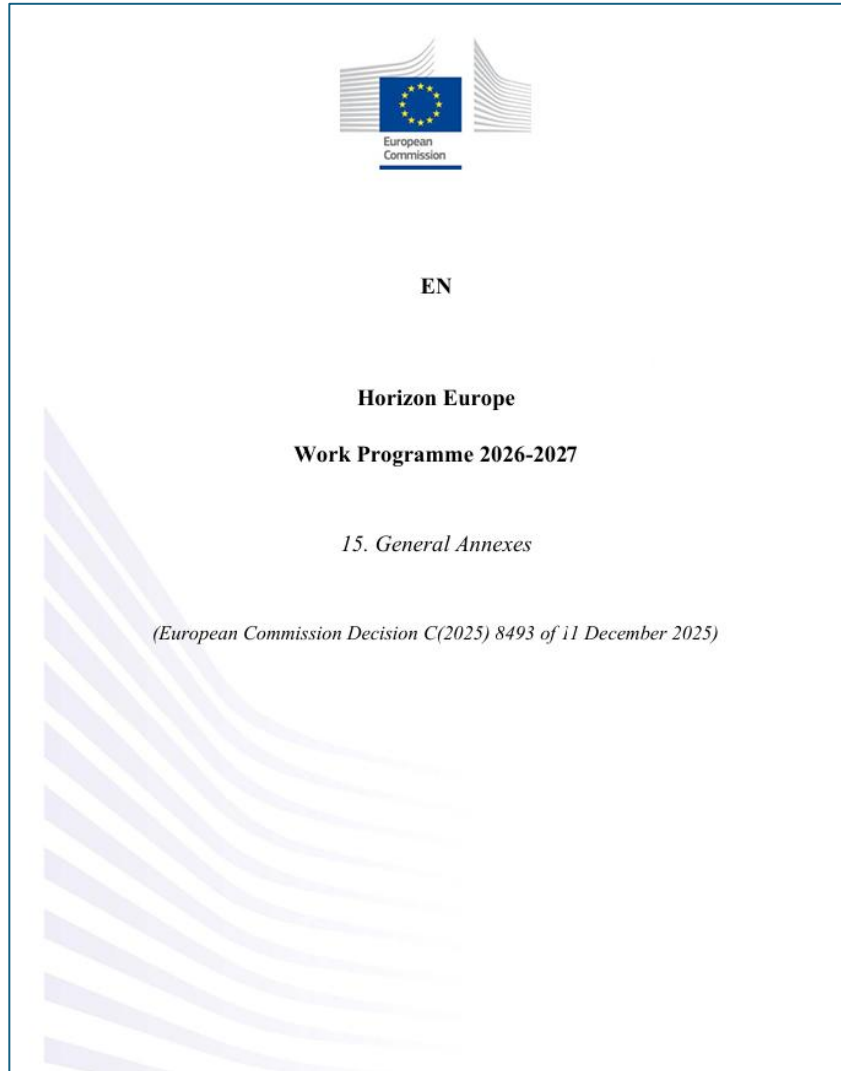
Work Programme 2026-2027

13. New European Bauhaus Facility

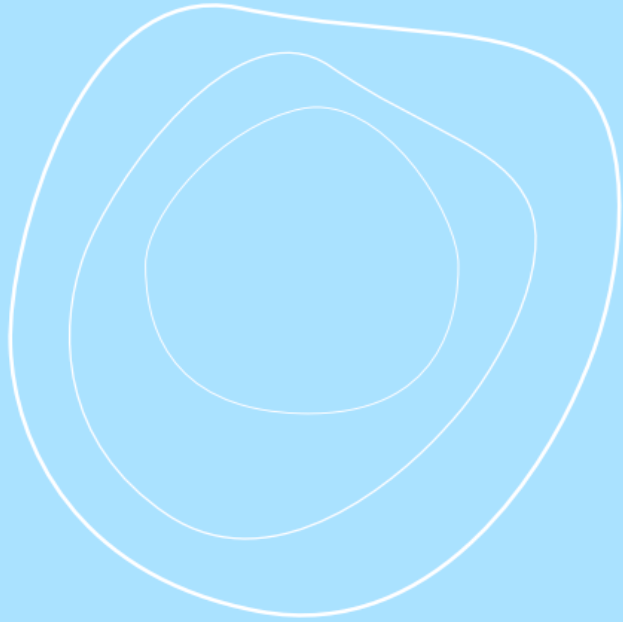
DISCLAIMER

This draft has not been adopted or endorsed by the European Commission. Any views expressed are the preliminary views of the Commission services and may not in any circumstances be regarded as stating an official position of the Commission. The information transmitted is intended only for the Member State or entity to which it is addressed for discussions and may contain confidential and/or privileged material.

Technical specifications for NEB 2026-2027 calls



- General Annexes cover
 - A: Admissibility;
 - B: Eligibility;
 - C: Financial and operational capacity and exclusion;
 - D Award criteria;
 - E: Documents
 - F: Procedure
 - G: Legal and financial set-up of GAs.
-
- **Timeline : All calls single stage**
 - **Funding: Mostly LSF** and a small number of FSTP calls.
 - **Transdisciplinary: Most calls explicitly integrate SSH**
 - **Check** for any other **specific conditions per call.**



Destination 1

Connecting the green transformation,
social inclusion and local democracy

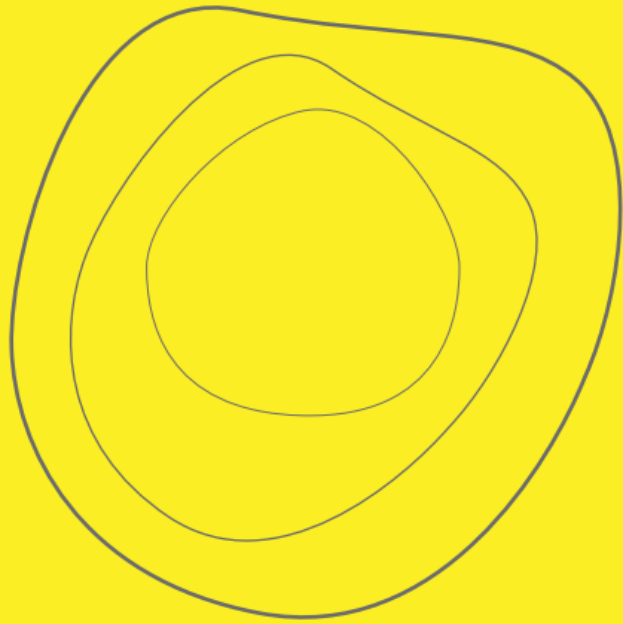


D1- 2026 calls - Connecting the green transformation, social inclusion and local democracy

HORIZON-NEB-2026-01-PARTICIPATION-01	Addressing homelessness through housing led approaches aligned with the New European Bauhaus	Innovation Action	2 projects c. EUR 6.3 each	LSF
HORIZON-NEB-2026-01-PARTICIPATION-02:	Innovative approaches for the spatial design of neighbourhoods	Innovation Action	2 projects, c. EUR 5m each	LSF
HORIZON-NEB-2026-01-PARTICIPATION-03	Understanding inhabitants' experiences of neighbourhoods to support their health and well being	Research & Innovation Action	3 projects, c. EUR 5m each	LSF

D1- 2027 calls - Connecting the green transformation, social inclusion and local democracy

HORIZON-NEB-2027-01-PARTICIPATION-01	The transformative potential of co-governance in the green transition of neighbourhoods	Innovation Action	2 projects, c. EUR 5.38m each	FSTP
HORIZON-NEB-2027-01-PARTICIPATION-02	Intergenerational neighbourhoods and communities aligned with the New European Bauhaus	Innovation Action	2 projects, c. EUR 5.25m each	LSF
HORIZON-NEB-2027-01-PARTICIPATION-03	Novel combinations of knowledge and research methods to address social issues and advance a fair green transition of neighbourhoods	Research & Innovation Action	4 projects, c.EUR 3.5m each	LSF



Destination 2

Circular and regenerative approaches
for the built environment



D2 -2026 calls - Circular and regenerative approaches for the built environment

HORIZON-NEB-2026-01-REGEN-01	Sustainable, inclusive, affordable and beautiful solutions for thermal comfort in buildings .	Innovation Action (TRL 5-7)	3 projects, c. EUR 4m each	LSF
HORIZON-NEB-2026-01-REGEN-02	Advancing sustainable maintenance and repair measures for existing buildings	Innovation Action (TRL 6-8)	2 projects, c. EUR 5m each	LSF
HORIZON-NEB-2026-01-REGEN-03	Innovative solutions for the sustainable and beautiful use of vertical space	Innovation Action (TRL 6-8)	3 projects, c. EUR 5m each	LSF

D2 -2027 calls - Circular and regenerative approaches for the built environment

HORIZON-NEB-2027-01-REGEN-01	Combining conventional and innovative construction materials, products and techniques for sustainable and beautiful buildings	Research & Innovation Action (TRL 4-5)	3 projects, c. EUR 4m each	LSF
HORIZON-NEB-2027-01-REGEN-02	Sustainable, beautiful and healthy construction and renovation sites	Research & Innovation Action (TRL 4-5)	2 projects, c. EUR 4m each	LSF
HORIZON-NEB-2027-01-REGEN-03	Revitalising neighbourhoods around existing railway and motorway corridors	Innovation Action (TRL 6-8)	2 projects, c. EUR 5.5m each	FSTP

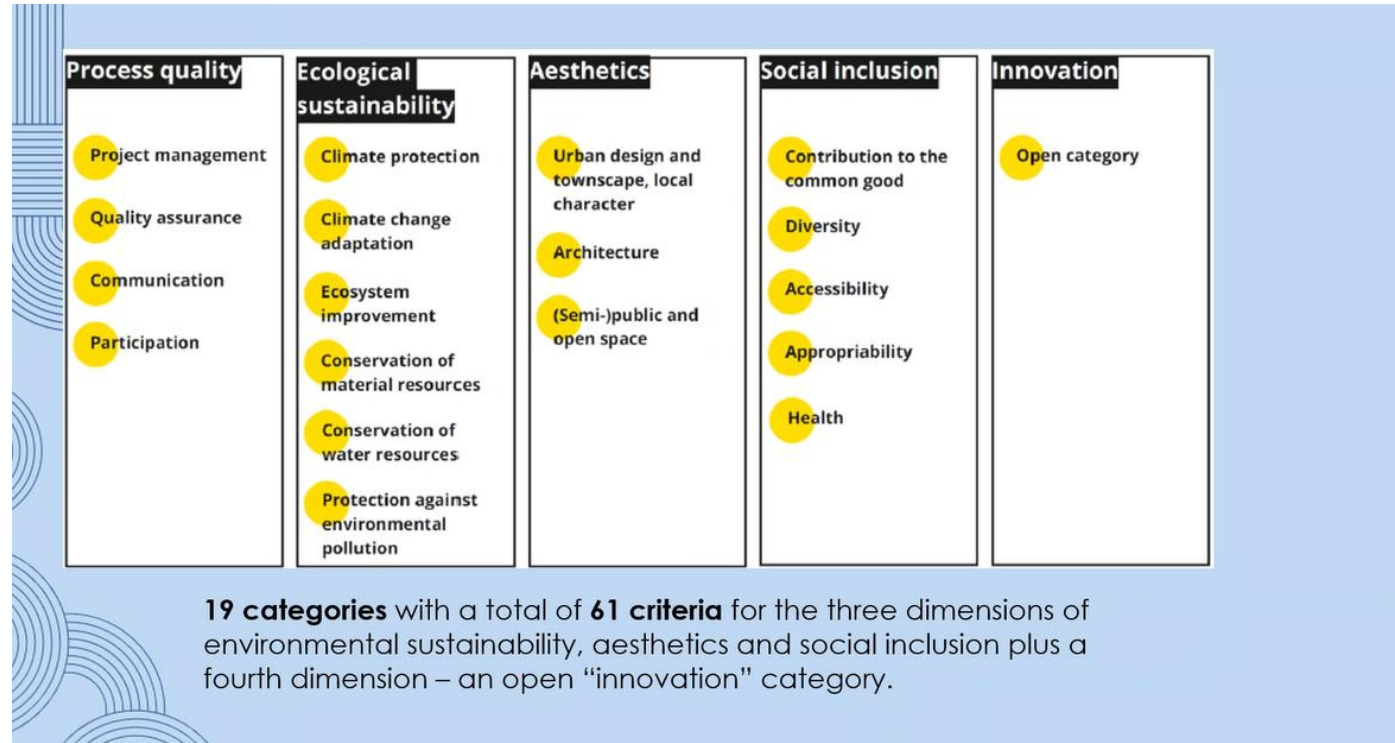
Destination 2 - Built Environment – NEB “KPIs”

The New European Bauhaus Self-Assessment Method sets out a multidisciplinary, synergistic approach to NEB project design under NEB values and principles.

The **online project design tool** and **handbook** provide integrated key performance indicators and a **technical performance framework** for the NEB built environment integrating factors such as green investment and buildings sustainability standards.

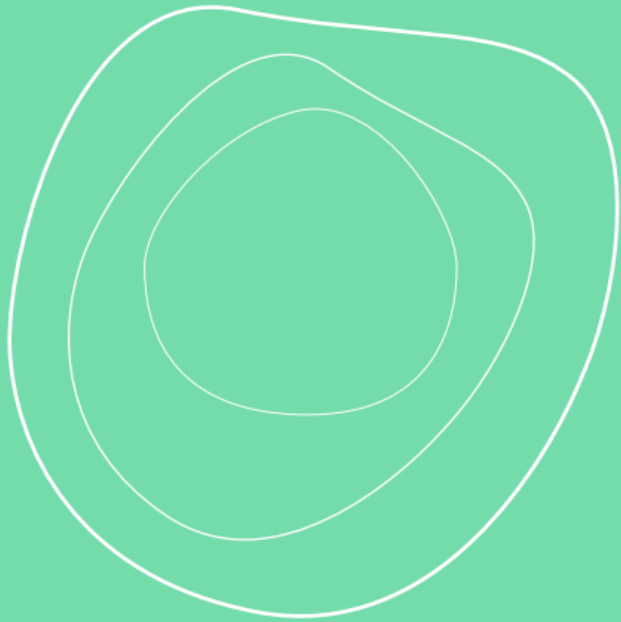


NEBKrit - Austrian Federal Ministry for Innovation, mobility and infrastructure – **NEB indicators** (incl BREEAM, BIM and others) as an **assessment framework for public buildings**.



19 categories with a total of 61 criteria for the three dimensions of environmental sustainability, aesthetics and social inclusion plus a fourth dimension – an open “innovation” category.

Commission Staff Working Document - Supporting life-cycle approaches to decarbonise European buildings - Environment



Destination 3

Innovative funding and new business models for the transformation of neighbourhoods



D3 - 2026 calls - Innovative funding and new business models for the transformation of neighbourhoods

HORIZON-NEB-2026-01-BUSINESS-01	Structurally addressing homelessness through integrated social infrastructure and services in neighbourhoods	Innovation Action	3 projects, c. EUR 3.5m each	LSF
HORIZON-NEB-2026-01-BUSINESS-02	Understanding capital market dynamics towards increased investment in New European Bauhaus projects in neighbourhoods	Research & Innovation Action	2 projects, c. EUR 3.5m each	LSF
HORIZON-NEB-2026-01-BUSINESS-03:	Approaches to reuse vacant, obsolete or underutilised spaces	Research & Innovation Action	2 projects, c. EUR 4.5m each	LSF

D3 - 2027 calls - Innovative funding and new business models for the transformation of neighbourhoods

<p>HORIZON-NEB-2027-01-BUSINESS-01</p>	<p>Mass customisation of offsite manufactured modular construction components to transform the existing built environment</p>	<p>Innovation Action</p>	<p>2 projects, c. EUR 5m each</p>	<p>LSF</p>
<p>HORIZON-NEB-2027-01-BUSINESS-02</p>	<p>Innovative models for collective community investment and ownership <i>[Special conditions – 1 of Option A, 1 of Option B (types of equity models)]</i></p>	<p>Research & Innovation Action</p>	<p>3 projects, c. EUR 3.5m</p>	<p>LSF</p>
<p>HORIZON-NEB-2027-01-BUSINESS-03</p>	<p>Anticipating neighbourhoods of the future in line with the New European Bauhaus</p>	<p>Research & Innovation Action</p>	<p>2 projects, c. EUR 3.5m</p>	<p>LSF</p>

Other calls in 2026 and in 2027

EU Missions WP

Single-stage call opening 4 Feb 2026, deadline 8 Oct 2026

- HORIZON-MISS-2026-04-CIT-NEB-B4P-CCRI-03: **Introducing circular economy models in the construction sector, from buildings to city scale.** *c.€9.5m per project for up to 5 projects.*

Single-stage call opening 9 Feb 2027, deadline 22 Sep 2027

- HORIZON-MISS-2027-07-CLIMA-CIT-NEB-01: **Urban nature: supporting restoration of urban ecosystems, along urban transport networks and in the built environment.** *c.€10m per project for up to 4 projects.*

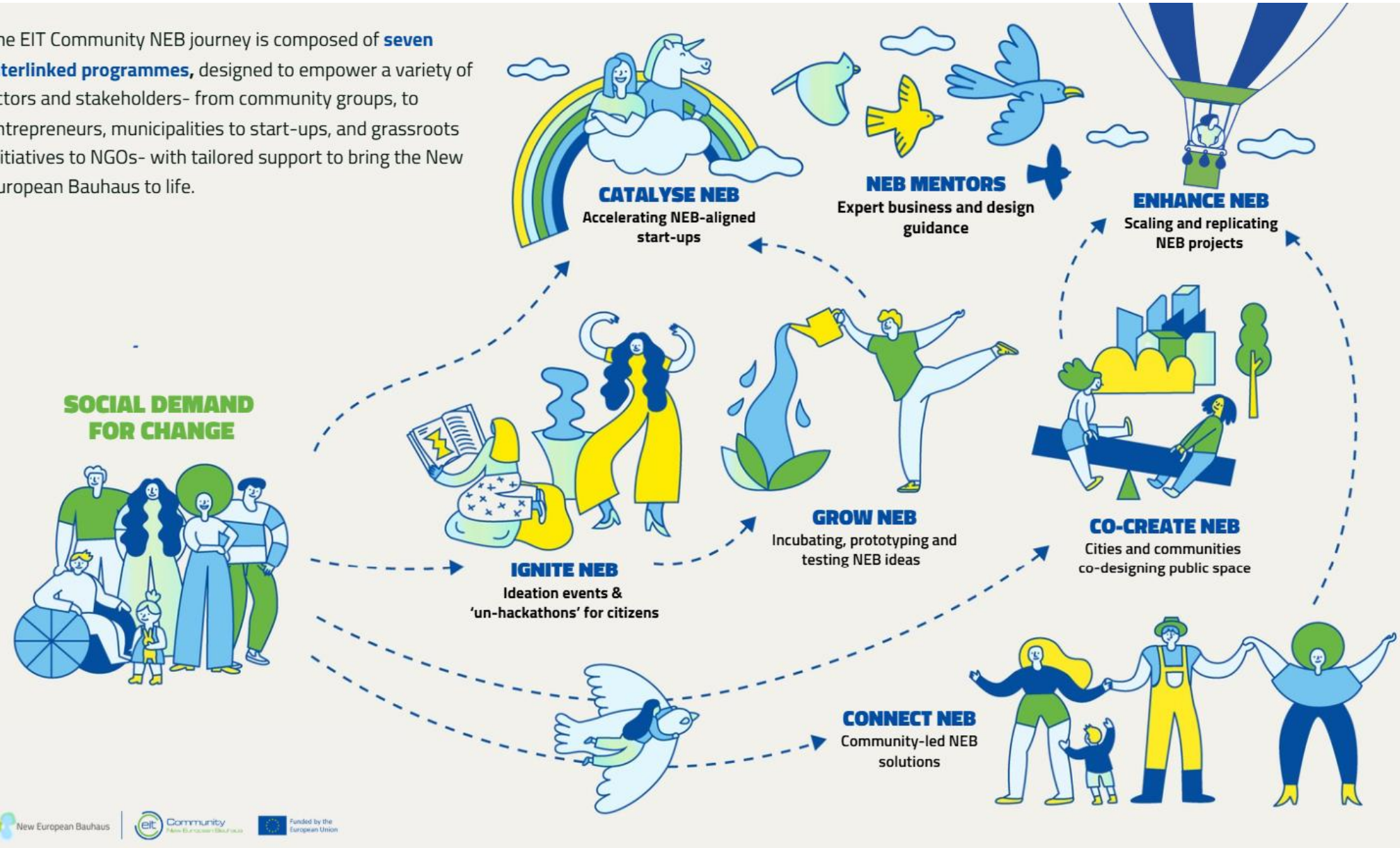
There is also a **2027 joint call** with the “**Soil Deal for Europe**” EU Mission in the **NEB WP**:

Single-stage IA call (TRL 6-8), opening 5 May 2027, deadline 15 Sep 2027

- HORIZON-NEB-2027-02-NEB-SOIL-01: **Reducing soil sealing through sustainable urban and territorial design in the New European Bauhaus.** *c.€7.5m per project for 2 projects.*
- Please refer to the “**multi-actor approach**” in the Introduction to the **Mission Soil WP.**

EIT Community NEB - Citizen scale open calls summer!

The EIT Community NEB journey is composed of **seven interlinked programmes**, designed to empower a variety of actors and stakeholders- from community groups, to entrepreneurs, municipalities to start-ups, and grassroots initiatives to NGOs- with tailored support to bring the New European Bauhaus to life.





C2 – WP 2026-2027 – NEB related calls

- RIA – EUR 12m – (Projects of EUR 3-4m) - **HORIZON-CL2-2026-01-TRANSFO-07: Fostering competences for the green transition** [**NEB** - proposals should focus on one of the following sectors, which are particularly affected by an increasing demand for green expertise: 1) sustainable agriculture and food production, 2) automotive industry, 3) energy and 4) construction, 5) nature and climate adaptation.]
- RIA – EUR 12m – (Projects of EUR 3-4m) - **HORIZON-CL2-2026-01-TRANSFO-07: Fostering competences for the green transition** - Projects should identify the skills young people and workers need for a green, nature-protecting EU economy. They should give policymakers and education providers clear, practical guidance on how to build these skills throughout life, considering gender and disability. They must also explain how green-transition skills connect with those needed for the digital transition. [**Greencomp** and **Union of Skills** referenced] . Cooperation with other calls is encouraged including topics under the **New European Bauhaus** (topic *HORIZON-NEB-2026-01-PARTICIPATION-03: Understanding inhabitant's experiences of neighbourhoods to support their health and well-being*, and topic *HORIZON-MISS-2027-07 CLIMA-CIT-NEB-01: Urban nature: supporting restoration of urban ecosystems, along urban transport networks and in the built environment*).

[Cluster 2 Info Days, matchmaking and WP 26-27](#)

ccisncp@esrc.ukri.org – **UK NCP for Culture, Creativity & Inclusive Society**



New European Bauhaus

Mission Cities



OBJECTIVES OF THE EU CITIES MISSION

- 100 **climate-neutral** and **smart cities** by 2030
- Ensure that these cities act as **experimentation and innovation hubs** to put all European cities in a position to become climate-neutral by 2050

SELECTED CITIES

- 100 EU cities
- 12 cities from countries associated to Horizon Europe, the EU's research and innovation programme (2021-2027).



Cities from every Member State



Capital cities



Small, medium, large cities



Frontrunners and less prepared cities

ncp-climate@iuk.ukri.org
UK NCP for Mission Cities

[Horizon Europe 2026-27: EU Missions - Climate-Neutral and Smart Cities - Innovate UK Business Connect](#)

Climate Neutral and Smart Cities EU Mission

This Mission aims to accompany **at least 150 regions / communities to climate resilience by 2030.**

- ❖ **Continued focus on the 100+ cities as living labs**
- ❖ **Cross-mission & cross-programme integration**
- ❖ **Deployment, governance & citizen engagement**
- ❖ **Larger, demonstrator-style grants**
- ❖ **Digital/technical tools for cities**

Climate-Neutral and Smart Cities (I/II)

- The **Missions Work Programme** in its entirety can be found [here](#). Please **see specific call information for full conditions per call.**
- **Opening: 04 Feb 2026 - Deadline: 08 Oct 2026**
- HORIZON-MISS-2026-04-CIT-01: Energy efficient urban and sub-urban public transport, complemented by shared **mobility**
- HORIZON-MISS-2026-04-CIT-02: Transition to low-temperature **heating solutions** in multi-apartment buildings
- **HORIZON-MISS-2026-04-CIT-NEB-B4P-CCRI-03: Introducing circular economy models in the construction sector, from buildings to city scale.**

HORIZON-MISS-2026-04-CIT-NEB-B4P-CCRI-03: Introducing circular economy models in the construction sector, from building to city scale

Type of action: Innovation Actions

Expected EU contribution per project: EUR 9.50 M

Indicative topic budget: EUR 47.50 M

Deadline: 08/10/2026

Specific conditions

- Lump sum
- TRL 7-8 by the end of the project
- Demonstration in at least three cities:
 - Each from a different Member State or Associated Country
 - Cities must participate as beneficiaries
 - At least one of the three cities must be one of the 112 cities participating in the EU Mission on Climate-Neutral and Smart Cities
- Contribution to the Cities Mission, the NEB, the B4P Partnership and the CCRI:
 - Proposals should include a dedicated task, allocate appropriate resources, and develop a plan for collaboration with relevant projects, partners, and initiatives

Climate-Neutral and Smart Cities (II/II)

- Opening: 09 Feb 2027 Deadline: 07 Oct 2027
- HORIZON-MISS-2027-04-CIT-01: Innovative microgrids for improved energy system integration and efficiency in urban contexts
- *HORIZON-MISS-2027-04-CIT-02: Hydrogen cities [CSA – Networking, working groups.]*
- HORIZON-MISS-2027-04-CIT-03: Inclusive and climate resilient multimodal passenger hubs enhancing modal shift towards sustainable transport and shared mobility
- HORIZON-MISS-2027-04-CIT-CCRI-04: Advancing circular logistics solutions in cities
- HORIZON-MISS-2027-04-CIT-05: Boosting the transformation towards climate-neutral cities, the net-zero economy and open strategic autonomy through Pre-Commercial Procurement (**PCP**)
- Opening: 09 Feb 2027 Deadline: 22 Sep 2027
- **HORIZON-MISS-2027-07-CLIMA-CIT-NEB-01: Urban nature: supporting restoration of urban ecosystems, along urban transport networks and in the built environment**
- HORIZON-MISS-2027-07-CLIMA-CIT-CCRI-02: Deploying innovative wastewater management, treatment and valorisation solutions in European cities and regions in the context of climate change.

HORIZON-MISS-2027-07-CLIMA-CIT-NEB-01

Specific call conditions:

HORIZON-MISS-2027-07-CLIMA-CIT-NEB-01: **Urban nature: supporting restoration of urban ecosystems, along urban transport networks and in the built environment.**

*"The following **additional eligibility criteria** apply: Entities from **at least four cities**, each from a different Member State or Associated Country, **must** participate as beneficiaries. **At least one** of the four cities must be one of the **112 cities** selected for the EU Mission on Climate-neutral and Smart Cities and **at least one** must be a signatory to the **Adaptation Mission Charter**."*



New European Bauhaus

EU Funding & Tenders – Online Manual

WHAT:

Official step-by-step guide for registration, submission, grant preparation and management

WHY:

Ensures teams follow the exact process, avoid admissibility pitfalls and use the latest topic-specific instructions—cleaner, compliant submissions

WHERE:

[Online Manual](#)



Useful links and sources of information

- [EU Funding & Tenders portal](#) where all the open and forthcoming Topics that are formally published can be seen
- [Briefing that evaluators](#) are given to explain how they should evaluate proposals – you too should sign up to be an evaluator
- [Reference documents](#) that include templates, guides, General Annexes, full published Work Programmes, etc
- [UK Horizon Europe Hub](#) with links to published draft Work Programmes for 2026-2027
- The EC has its own [YouTube channel](#) with videos explaining what makes a good proposal, how to calculate costs, etc.

Resources- SSH in HEu

- [**H2020 report on integrating SSH**](#)
- [ssh-opportunities_2026-27_final.pdf](#)
- [SSH in Cluster 5 | Cluster 5 | Horizon Europe NCP Portal](#)
- [SSH integration - Research and innovation - European Commission](#)
- [**ERC report on SSH in the NEB.pdf**](#)

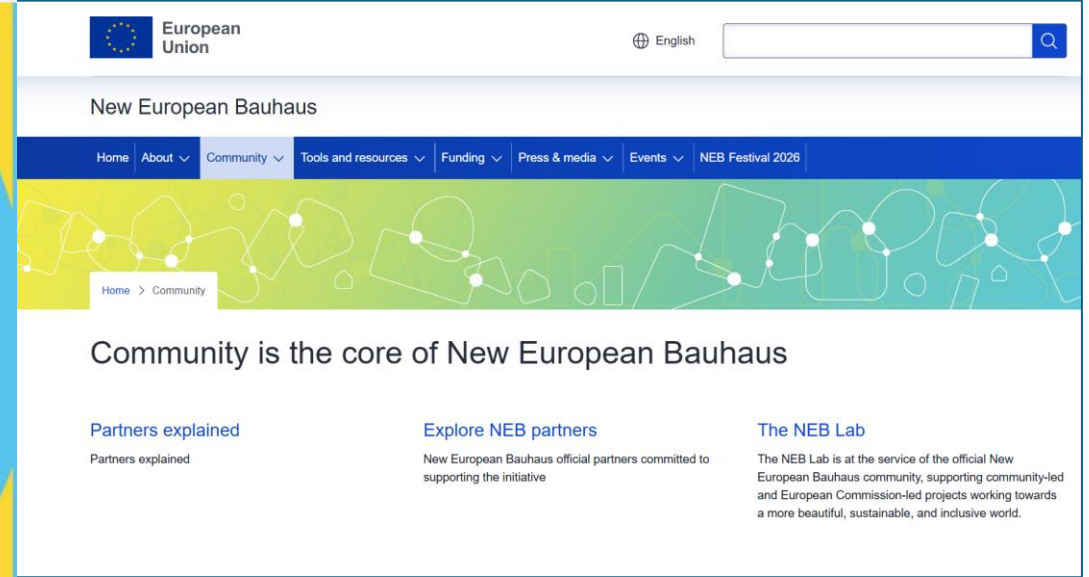
NEB – EC & UK websites– contact building, resources

[NEB website](#)

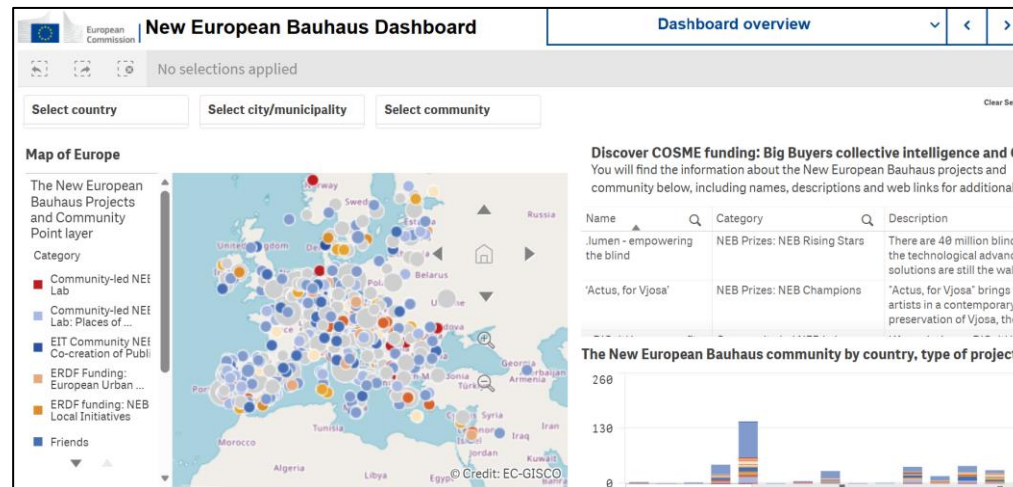
NCP-
bauhaus@ukro.ac.uk

**UK National Contact
Point for the New
European Bauhaus**

**Hazel Dalgård,
UKRO**



NEB Festival 2026 – Programme



- **EC INFO: NEB Facility (“Info Days”) webinar – 24 02 26 –Horizon Europe calls - [NEB Facility 2026 Info Days](#)**
- **ONLINE COMMUNITY: Consortia building and NEB project design tools. [NEB Community](#)**
- **CONSORTIA BUILDING PLATFORM – 2026 NEB HEu calls - [Home | NEB Facility matchmaking 2026](#)**

Other Resources – NEB

- [NEBA Alliance conference 2026 \(construction skills\)](#)
- Climate Pact conference [Together in Action 2026](#) and [Social Climate Fund, Just Transition Fund](#).
- [100 years of Bauhaus Conference](#)
- **NEB in action - lives and livelihoods** - [RIPPLE!](#) A short film showcasing **NEB projects!**
- [NEB Prizes 2025: Winners | New European Bauhaus Prizes](#) and [NEB Prizes 2024: Winners | New European Bauhaus Prizes](#)