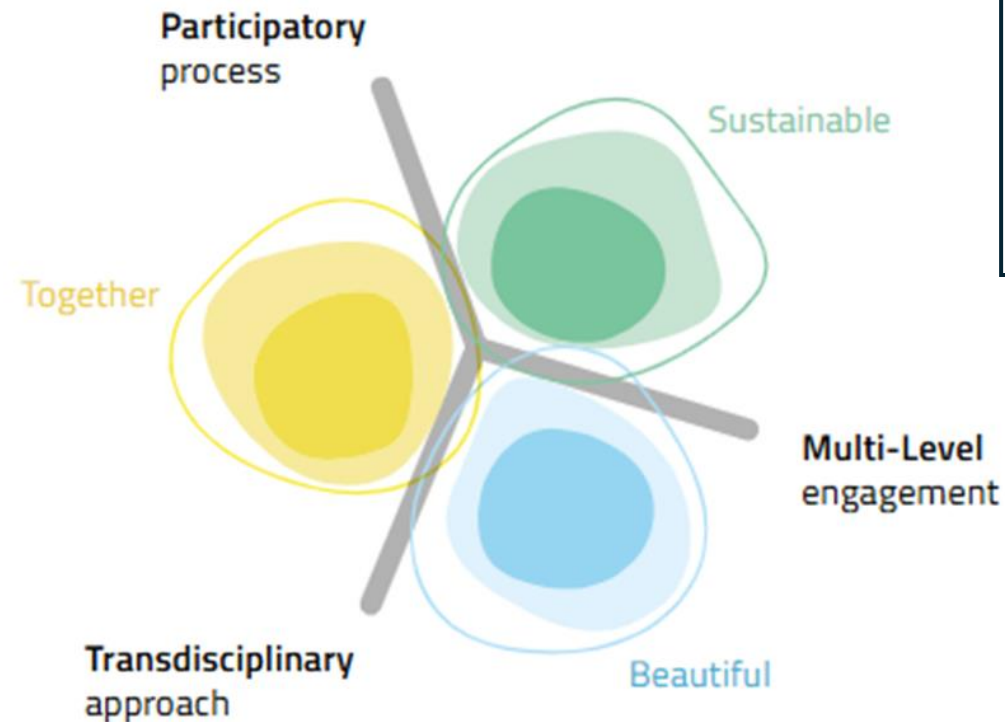


# New European Bauhaus

*“aims to accelerate the transformation of neighbourhoods through sustainable and inclusive design.”*



[NCP-bauhaus@ukro.ac.uk](mailto:NCP-bauhaus@ukro.ac.uk)

UK National Contact Point for  
the New European Bauhaus  
Hazel Dalgård, UKRO

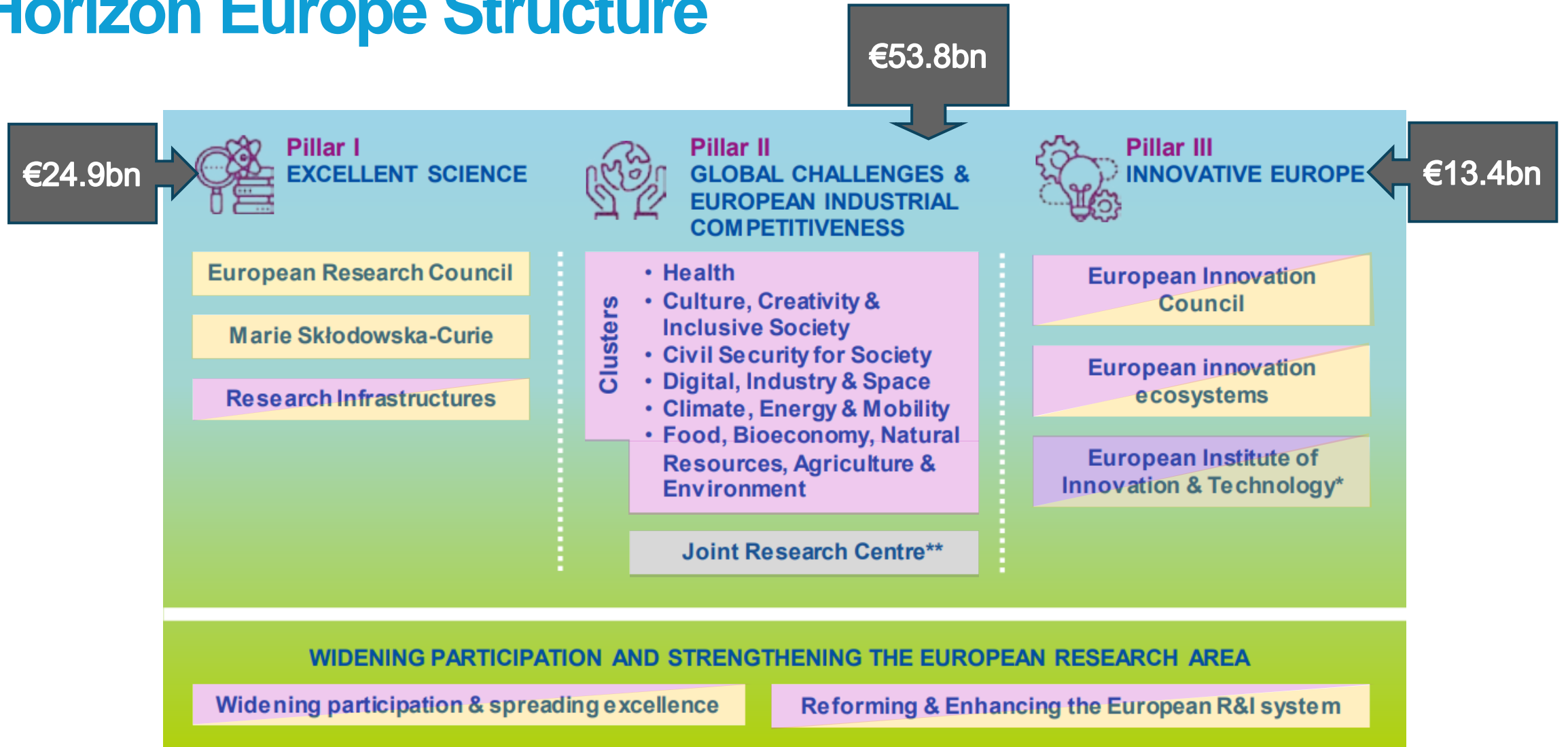
<https://www.ukro.ac.uk>

# What is Horizon Europe?

- Horizon Europe is the EU's Research and Innovation funding programme and runs calls for proposals from 2021 until 2027
- Horizon Europe is the largest international R&I funding programme with a budget of €95.5 billion
- ✓ **Horizon Europe funds all types of organisation**  
(unless otherwise specified in the call documents)



# Horizon Europe Structure



**Key:**

Open to all research and innovation fields

Challenge driven – must solve the problem posed – not bottom-up idea driven

# Pillar II – Cross cutting opportunities

## Horizon Europe 'Missions'

Adaptation to  
Climate Change



Cancer



Climate-neutral  
and Smart Cities



Restore our  
Ocean and Waters



Soil Deal  
for Europe



**For example - Mission Cities:** involves local authorities, citizens, businesses, investors, regional and national authorities to

- 1. Deliver 100 climate-neutral and smart cities by 2030 - in a cross-sectoral, demand-led approach.*
- 2. Ensure that these cities act as experimentation and innovation hubs to enable all European cities to follow suit by 2050*

New European  
Bauhaus

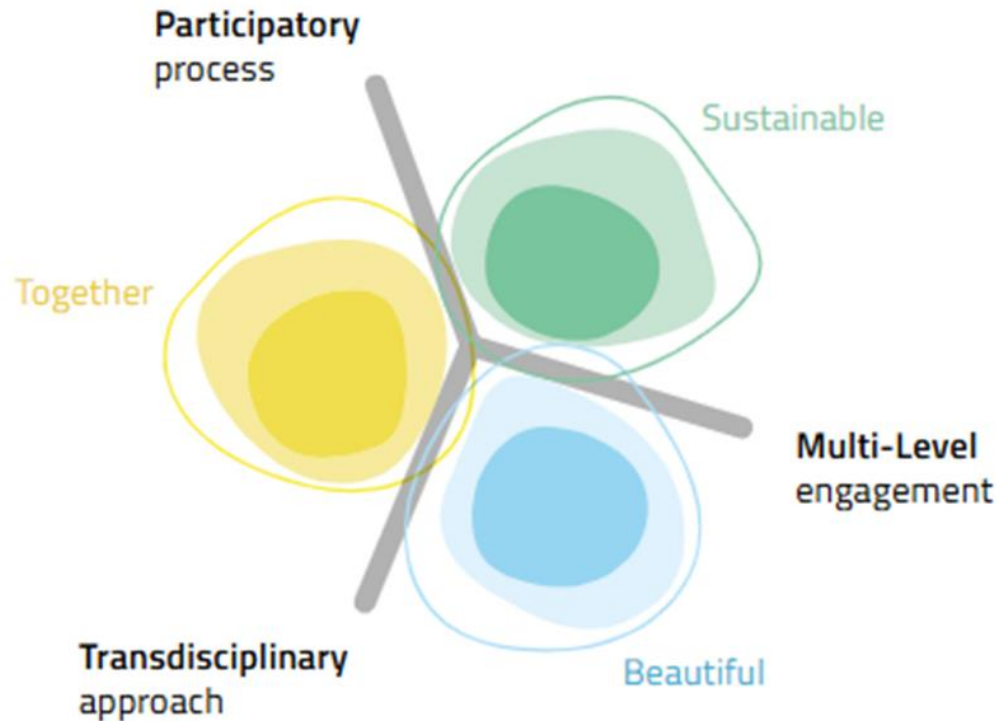
A separate cross-cutting initiative to foster sustainable solutions for transforming the built environment and lifestyles under the green transition.

NEB supports all 4 climate related missions.

# NEB Compass: values and principles

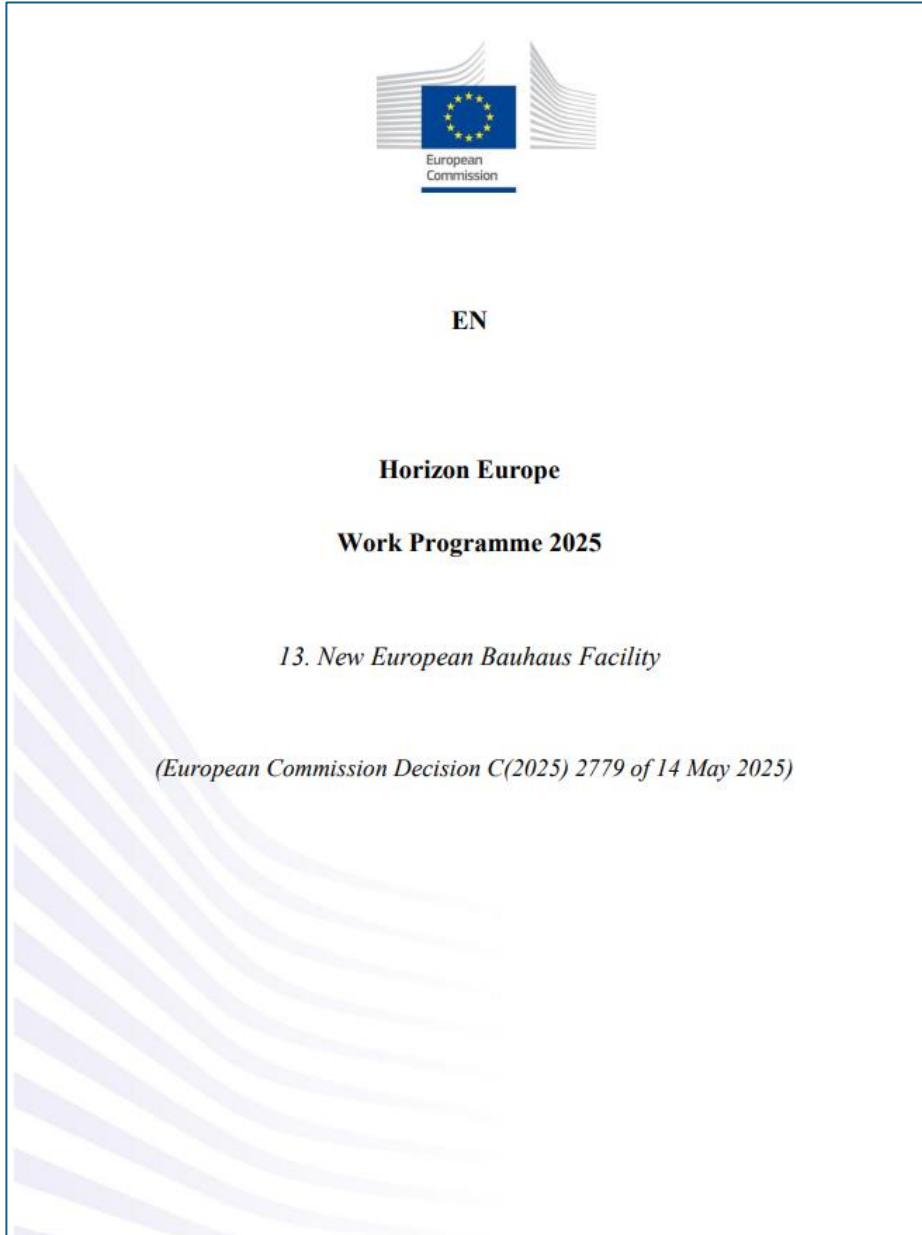
**Beautiful means aesthetically pleasing, a high-quality living environment, beyond mere functionality**, with attentiveness to the cultural context and contributing to people's sense of belonging and physical and mental health.

**Inclusive means granting and securing equal access to opportunities and resources for all and encouraging exchanges across cultures, genders and ages.** It addresses the physical, social and economic inclusion of all members of the society, including affordability and accessibility. It builds towards social justice and equitable social models.



**Sustainable means prioritising the needs of all life forms and of the planet by ensuring that human activity does not exceed planetary boundaries.** It includes resource efficient construction methods and bio-fabricated materials or recycled components and minimizing waste and reducing the need for extracting raw resources. The ability to prolong usability, to **consider the entire system of a project** and at the highest level use **regenerative design** to reconnect to nature are important aims.

# 2025 NEB calls are now open! 6 May-12 Nov



- Horizon Europe Work Programme for NEB 2025
- Currently open and forthcoming NEB calls - European Union  
(UK participants select **Horizon Europe NEB calls** only.)

# What are the eligibility criteria for NEB projects?

✓ **NEB projects are consortium projects** involving independent legal entities from *at least* 3 EU Member States or [Associated Countries](#) (one of which must be a Member State)

✓ **This means that a collaborative consortium needs to include**

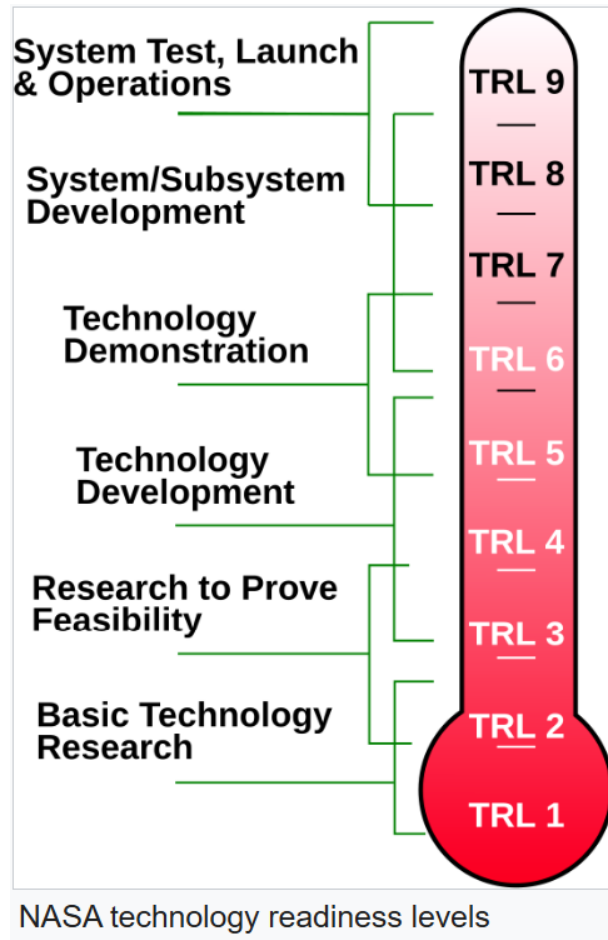
- at least one independent legal entity established in a Member State of the European Union
- at least two other independent legal entities each established either in a different Member State or an Associated Country.

✓ ***In practice*, consortia tend to involve 12 or more participants but MUST meet the minimum criteria above.**





# Call types and the Technology Readiness Levels



- **Innovation Actions typically fund** limited R&D activities with a key focus on innovation including new or improved products, processes or services at **higher TRLs** at a funding rate of 100% for non-profit legal entities and 70% eligible direct costs for for-profits.
- **Research and Innovation Actions typically fund** multi-actor collaborative research and innovation projects of **lower Technology Readiness Levels (TRLs)** with a funding rate of 100% of eligible direct costs.

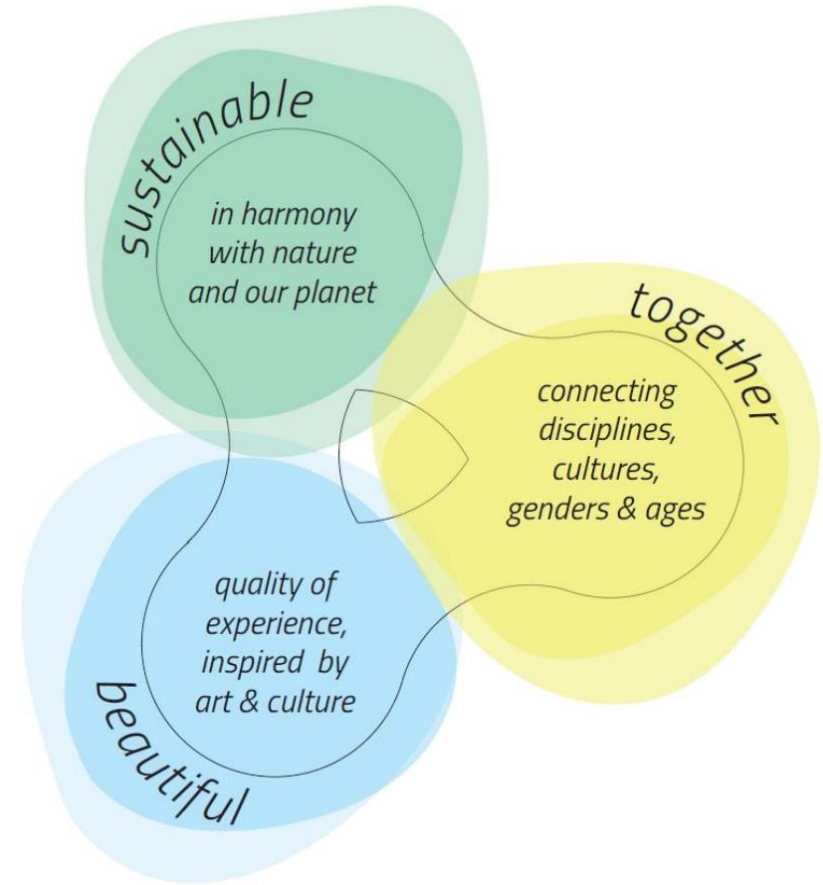
**Coordinating and Support Actions** typically fund working groups, networking and communication (of results) at 100% eligible direct costs.



# NEB 2025 Destinations

## Three **destinations (broad topics)**:

1. Connecting the green transformation, social inclusion and local democracy
2. Circular and regenerative approaches for the built environment
3. Innovative funding and new business models for the transformation of neighbourhoods



**NEB expanded compass values**

## Destination 1: Connecting the green transformation, social inclusion and local democracy

**Deadline:** 12 November 2025

Topic identifier	Topic title	Type of action	Indicative budget (EUR million)	N. projects	Legal & financial set up
HORIZON-NEB-2025-01-PARTICIPATION-01	The impact of common space on neighbourhood communities	RIA	10.50	3	Lump sum
HORIZON-NEB-2025-01-PARTICIPATION-02	Fostering and maintaining the social fabric for the green transition in neighbourhoods	RIA	9.00	3	Lump sum
HORIZON-NEB-2025-01-PARTICIPATION-03	Beautiful, sustainable and inclusive street furniture for the transformation of neighbourhoods	IA	10.40	2	Financial support to third parties
HORIZON-NEB-2025-01-PARTICIPATION-04	Network of neighbourhoods for innovative policies on gentrification	CSA	2.50	1	Lump sum



## Destination 2: Circular and regenerative approaches for the built environment

**Deadline:** 12 November 2025

Topic identifier	Topic title	Type of action	Indicative budget (EUR million)	N. projects	TRL level	Legal & financial set up
HORIZON-NEB-2025-01-REGEN-01	Applying regenerative design to the built environment in neighbourhoods	IA	8	2	TRL 6-8	Financial support to third parties
HORIZON-NEB-2025-01-REGEN-02	Bio-fabricated materials for sustainable and beautiful construction	RIA	10	2	TRL 5	/
HORIZON-NEB-2025-01-REGEN-03	Sufficiency measures in the built environment	RIA	8	2	TRL5	/
HORIZON-NEB-2025-01-REGEN-04	Innovative approaches for sustainable, inclusive and beautiful social and affordable housing	IA	16	2	TRL 6-8	Financial support to third parties

New European Bauhaus



## Destination 3: Innovative funding and new business models for the transformation of neighbourhoods

**Deadline:** 12 November 2025

Topic identifier	Topic title	Type of action	Indicative budget (EUR million)	N. projects	Legal & financial set up
HORIZON-NEB-2025-01-BUSINESS-01	Renovating the built environment through design for adaptability and disassembly	IA	12	2	Lump sum
HORIZON-NEB-2025-01-BUSINESS-02	Bottom-up social entrepreneurship for the co-creation of neighbourhoods in line with the New European Bauhaus	IA	12	3	Lump sum
HORIZON-NEB-2025-01-BUSINESS-03	Reverse local construction supply chains for the beautiful re-assembly of reclaimed construction products	RIA	12	3	Lump sum

New European Bauhaus



# Some **NEB-specific** considerations

- **Existing** or new buildings, **public/private/mixed use**, and **indoor/outdoor** spaces?
- Scale – a **building...up to... an area up to 25km<sup>2</sup>**
- **Rural, urban** and **peri-urban** environment/s?
- NEB is **place based- number of sites or demonstrators?** 1-15 in 2025 calls.
- All projects are **transdisciplinary** and **must** address **sustainability, inclusivity and beauty**.
- **All projects are place based WITH communities.**

**Golden rules** – any Horizon top-down call for consortia.

## **Size of your consortium?**

**The right size** to deliver the project (has the right expertise.)

## **Which call topic to pursue?**

The one **you can provide the solutions to!** (*Answer the challenge set out in the call text, don't try to fit projects the wrong shape under the text!*)

## **Flexibility in the call text?**

(*“Should/may” or “must/are expected to”. Read the call text!*)



# NEB Key messages

- **NEB is a kaleidoscope reflecting all of Horizon Europe and the Sustainable Development Goals**
- It provides a platform for **multidisciplinary solutions and tools** to support the complex business of delivering a just and green transition, **in place**.
- **NEB allows us to envision the positive, climate adapted and inclusive world that we want to create**, and to support **places worth living in**. It is very welcoming to **changemakers**.
- **NEB drives coalition building at a local level** and several local stakeholders may be involved, as well as global partners.
- **Community co-creation is vital to NEB projects from the outset**.
- **All things are connected within an NEB project** e.g. an **affordable housing** project could **reduce fuel poverty, increase sustainable manufacturing** and trial new **blended finance approaches**.
- Whatever the **scale** of your project, and its unique tailoring to the **local context**, **results should be replicable elsewhere**.





**Bauhaus  
Bites**

**MAY 2025**

# **Birmingham Bauhaus Bites**

**Dominic Pender**

Senior Programme Officer – Food Team

Public Health Division

Birmingham City Council





# Background to Bauhaus Bites

**Project Duration** 2024 to 2027 – funded through EU Horizon 2030

**Goal** The project will seek to address the food system challenges faced by cities across Europe, in a way that is sustainable and environmentally positive.

**New European Bauhaus Principles** Achieve the Bauhaus Bites goals through promoting the principles of beautiful, inclusive, and sustainable diets.

**Co-Production** The project will be collaborative, bringing together knowledge and experience from all parts of the food system to promote sustainable diets

**Nature-based solutions** Food environments will be enhanced with nature-based solutions, to boost biodiversity and human well-being, and tackle climate change.

**Place-based approach** Bauhaus Bites will leverage community champions, culturally diverse diets, and nature to develop solutions in **East Birmingham**, strengthening local identity through celebrating the food system.



## Bauhaus Bites (BB) Playbook

**Focus** Provide solutions to health, environmental, and food challenges.

**Purpose** Summarise experiences, methods, tools, policies, financial models, and best practices.

**Target** A resource sharing how to work with diverse stakeholders build and maintain such environments, and address health, environmental, and societal food challenges with integrated and holistic solutions.

### Trailblazer Cities

- Birmingham, United Kingdom
- Fundão, Portugal
- Zagreb, Croatia

Pioneering and demonstrating the implementation of Bauhaus Bites Food Environments and informing the BB Playbook.

### Twinned Cities

- Ostend, Belgium
- Sarajevo, Serbia
- Palermo, Italy.
- Murska Sobota, Slovenia

Adapting and replicating the innovative approaches from the BB Playbook in their own contexts.



# What is Birmingham's role in Bauhaus Bites?

## Vision

To transform the food environment in an area of East Birmingham by celebrating cultural diversity and fostering inclusivity and access to healthy, sustainable food through community-led initiatives that strengthen social spaces at the heart of communities.

## Goal

To harness the power of diversity, promote social inclusion, increase food literacy, support sustainable diets and enhance green spaces.

## 1. Objective 1: Unite a diverse community through social spaces and food

1.1. Map community food assets

1.2. Identify community space to strengthen and co-produce an initiative with local stakeholders.

## 2. Objective 2: Support diversity in growing as a nature-based solution

2.1. Culturally diverse food growing database

2.2. Community land use framework to decide how best to use land

## 3. Objective 3: Increase the diversity of how food system literacy is developed

3.1. Co-producing innovative approaches to increase food literacy

## 4. Objective 4: Increase the diversity of the food offer within community food environments

4.1. Co-produce resources with people from food environments identified in project areas 1, 2 and 3

# NEB – UK specific support and contact

**UK National Contact Point - NEB mailbox** is [NCP-Bauhaus@ukro.ac.uk](mailto:NCP-Bauhaus@ukro.ac.uk) This is the **best way to get in touch** with specific questions!

The [Innovate UK pump priming scheme](#) is open to **UK registered businesses** until **15 July**. NEB-related activity is **included** in the funding. **Please apply!**

UKRO portal article with all Horizon Europe Work Programmes in 2025 -  
<https://www.ukro.ac.uk/news/horizon-europe-work-programme-2025-now-published/>

## UK National Contact Points for Horizon:

**ERC, MSCA, NEB, COST and Widening** - [www.ukro.ac.uk](http://www.ukro.ac.uk) and on [LinkedIn](#) Subscribe at UKRO's website for free to access Horizon Europe and NEB related content – news updates, factsheets, webinars.

**Other UK NCPs incl. Clusters and missions** - <https://www.gov.uk/business-finance-support/horizon-europe-funding#find-your-uk-national-contact-point-for-advice>

**UKRI Horizon Europe website** - [Horizon Europe: help for UK applicants – UKRI](#)

## MAIN NEB WEBSITE

- [New European Bauhaus website](#)

## STRATEGY

- [NEB Facility Roadmap 2025-2027](#)
- [Policy ecosystem relevant to NEB](#)

## FUNDING – WORK PROGRAMME 2025 & CALLS

- [NEB funding opportunities \(WP 25 calls\)](#)
- [NEB open calls page \(UK participants - “HORIZON-NEB” calls ONLY.\)](#)

## EC INFORMATION WEBINARS

- [NEB Info Days – essential viewing!](#)
- [Further NEB video resources](#)

## CONSORTIA BUILDING

- [EU funding and tenders portal](#) (find potential partners)
- [NEB Dashboard](#) (find contacts and partners)
- [Other country National Contact Points \(NCP\) for the NEB](#)

## PROJECT DESIGN TOOLS

- [New European Bauhaus Self Assessment Method](#)
- [New European Bauhaus Compass](#)
- [NEB Investment Guidelines](#)