



UK Research Office
Brussels

Marie Skłodowska-Curie Actions (MSCA) Doctoral Networks

Information For Applicants: Practical
Considerations for Proposal Development

mariecurie-uk@ukro.ac.uk

14 June 2023

Agenda

1 Welcome

Introduction to UKRO and UK Relationship to EU

2 MSCA Doctoral Networks – Practical Matters

3 Case Study - Professor Richard Mole

MSCA ITN "Delayed Transformational Fatigue in Central and Eastern Europe: Responding to the Rise of Populism"

Personal experience of the scheme

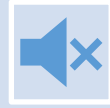
4 Question and Answer



UK Research Office
Brussels



Housekeeping



All participants will be muted for the duration of the webinar.



A chat function is available and will be monitored.



The session is **recorded**



Please use the Q&A function to submit questions. Up voting is available

About UKRO

We support UK research intensive organisations

- Maximise UK participation in Horizon Europe
- Provide a service to around 140 subscribers
- A Brussels-based team of advisors
- Part of UKRI's wider International team
- UK National Contact Point for [European Research Council](#) and [Marie Skłodowska-Curie Actions programmes](#)



Unlock the power of the UKRO portal

Sign up for MSCA news delivered to your inbox

Register for an event

Find out more about MSCA funding opportunities

Contact the UK MSCA National Contact Point

<https://www.ukro.ac.uk/mariecurie/>



UK Research Office
Brussels



UK's Relationship with the EU

Participation on Horizon Europe



Horizon Europe participation

On 24 December 2020, the negotiations on the UK-EU Trade and Cooperation Agreement concluded

The [announcement](#) confirmed that the intention of the UK is to associate **to Horizon Europe**

This includes **full participation in the programme** (with the exception of the EIC Accelerator Investment Fund)

UK entities can participate in/coordinate projects and receive funding from Horizon Europe

UKRO [website](#) provides latest information on UK participation



UK Research Office
Brussels

UK-EU TRADE AND COOPERATION AGREEMENT

Summary

December 2020

Commission Q&A

European Commission's Q&A confirms UK eligibility to apply:

“UK entities including universities, research centres, scientists, innovative businesses, industry, etc. can participate in the first calls for proposals of Horizon Europe as soon as they are published on the European Commission’s website.”

“...UK applicants are treated as if the UK is an associated country throughout the process, from admissibility and eligibility to evaluation, up until the preparation of grant agreements.”



UK Research Office
Brussels

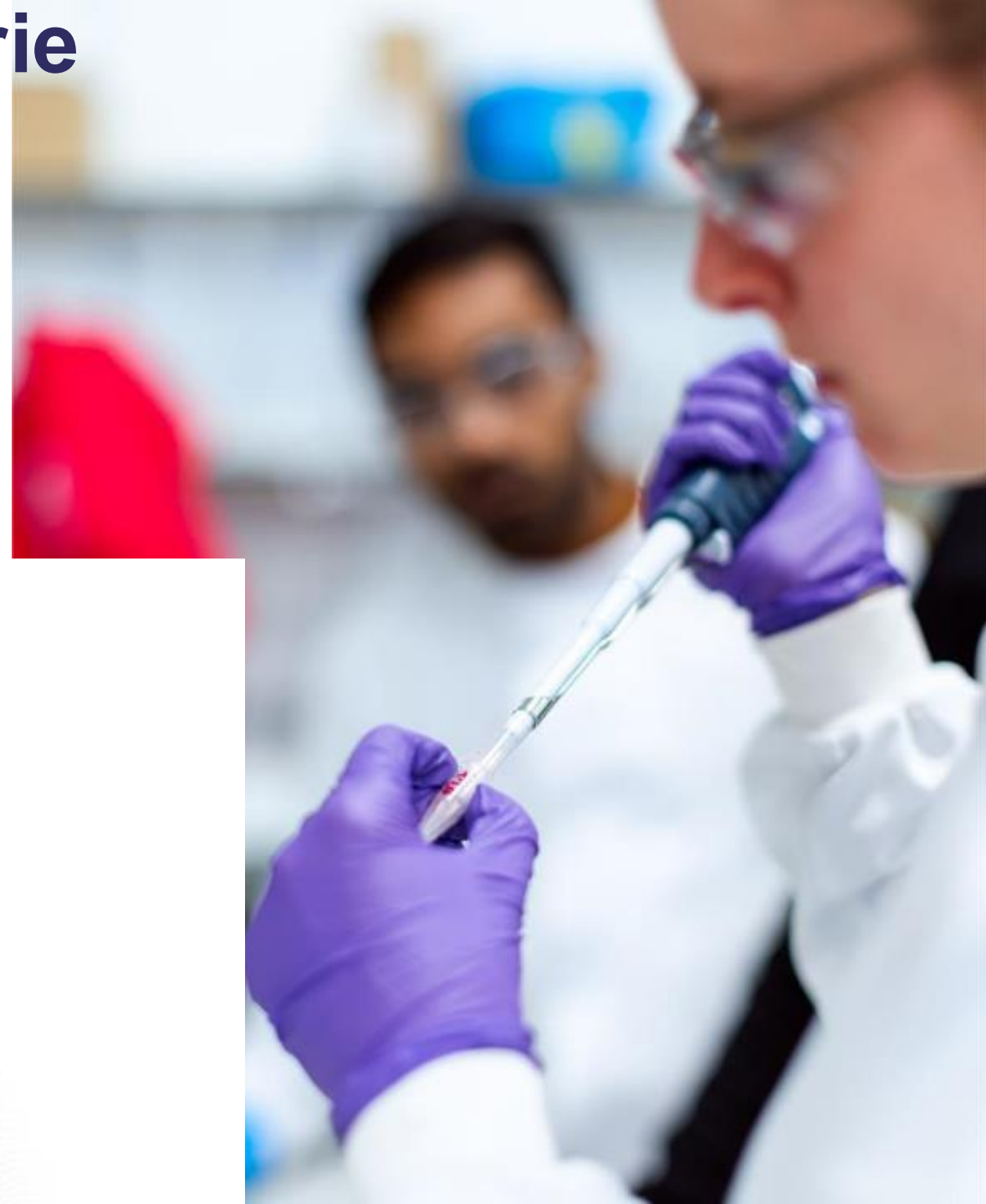


What Does this Mean for Marie Skłodowska-Curie Actions?

In MSCA Doctoral Networks UK based organisations can

- Participate as beneficiaries
- Coordinate projects
- Recruit doctoral candidates
- Can award PhDs
- Host on secondments
- Recruited doctoral candidates count toward the total number of person months

<https://marie-sklodowska-curie-actions.ec.europa.eu/news/horizon-europe-uk-participation>



Previous call results

DN 2021 Call Results

Panel	DN	DN-ID	DN-JD	Total
CHE	14	1	4	19
ECO	1	2	0	3
ENG	34	14	2	50
ENV	15	0	0	15
LIF	31	2	3	36
MAT	1	0	1	2
PHY	11	0	1	12
SOC	14	0	1	15
Total	121	19	12	152
Success Rate	13.5%	19.2%	15.4%	14.2%

- 1076 proposal submitted, 144 projects awarded
- **UK awarded 19 projects as coordinator**
- Participation as an beneficiary 89

DN 2022 Call Results

Panel	DN	DN-ID	DN-JD	Total
CHE	14	3	2	19
ECO	0	1	0	1
ENG	38	8	4	50
ENV	13	0	1	14
LIF	35	1	3	39
MAT	1	0	1	2
PHY	10	1	0	11
SOC	12	0	1	13
Total	123	14	12	149
Success Rate	15.4%	19.2%	16.0%	15.8%

- 946 proposals submitted, 149 projects awarded
- UK highest performing associated country
 - Participation as associated partner 60 & beneficiary 80
 - **coordinator for 7 projects**

MSCA Doctoral Networks

HORIZON-MSCA-2023-DN-01-01



MSCA Doctoral Network



A collaborative research project implemented through individual PhD projects.

Networks (beneficiaries) recruit PhD students in order to fulfil the research outcomes of the consortia.



Multidisciplinary, multisectoral and international consortium.

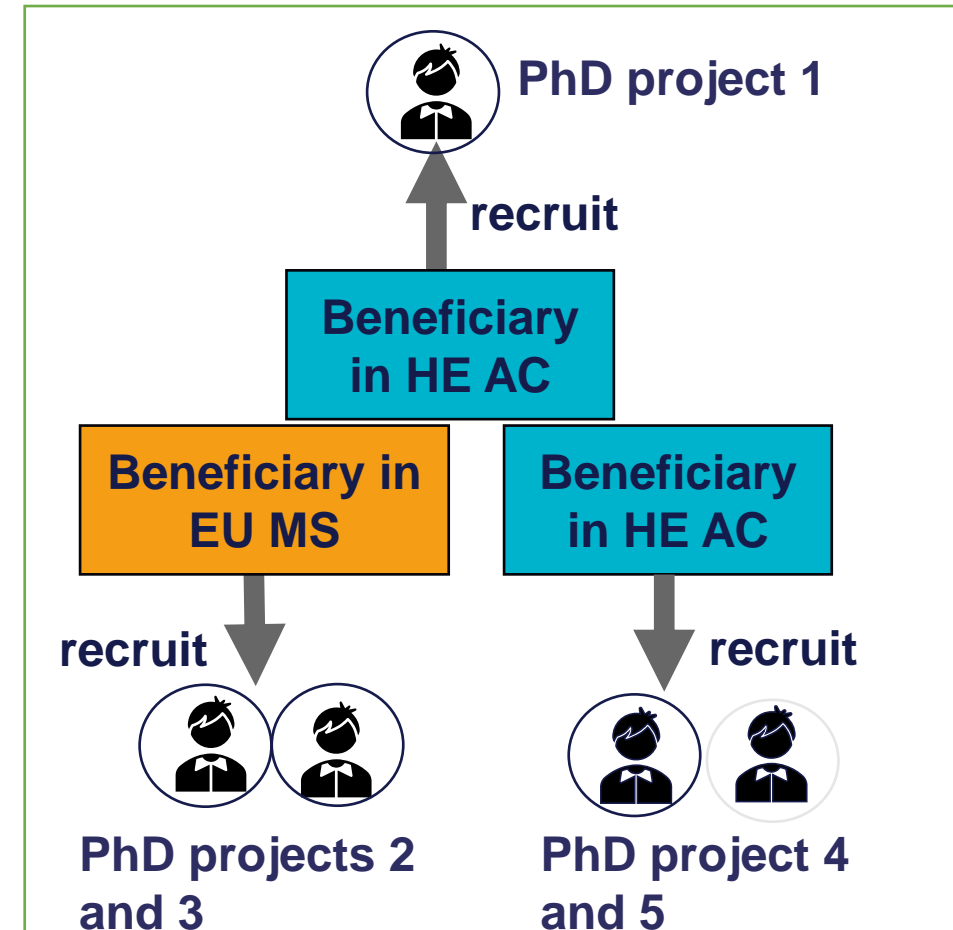
(partnerships of research institutes, research infrastructures, businesses including SMEs, and other socio-economic actors from different countries across Europe and beyond)



A competitively selected joint research training programme for Doctoral Candidates



Aim is to train creative, entrepreneurial, innovative and resilient doctoral candidates, while undertaking a shared research project



Collaborative Research Project

MSCA Doctoral Network



Consortium must consist of a minimum 3 beneficiaries located in EU MS/AC - one of which must be from an EU MS.



Only beneficiaries (organisations in HE AC/EU MS) can recruit PhD students.



Each beneficiary must recruit, host at their premises and supervise at least 1 researcher



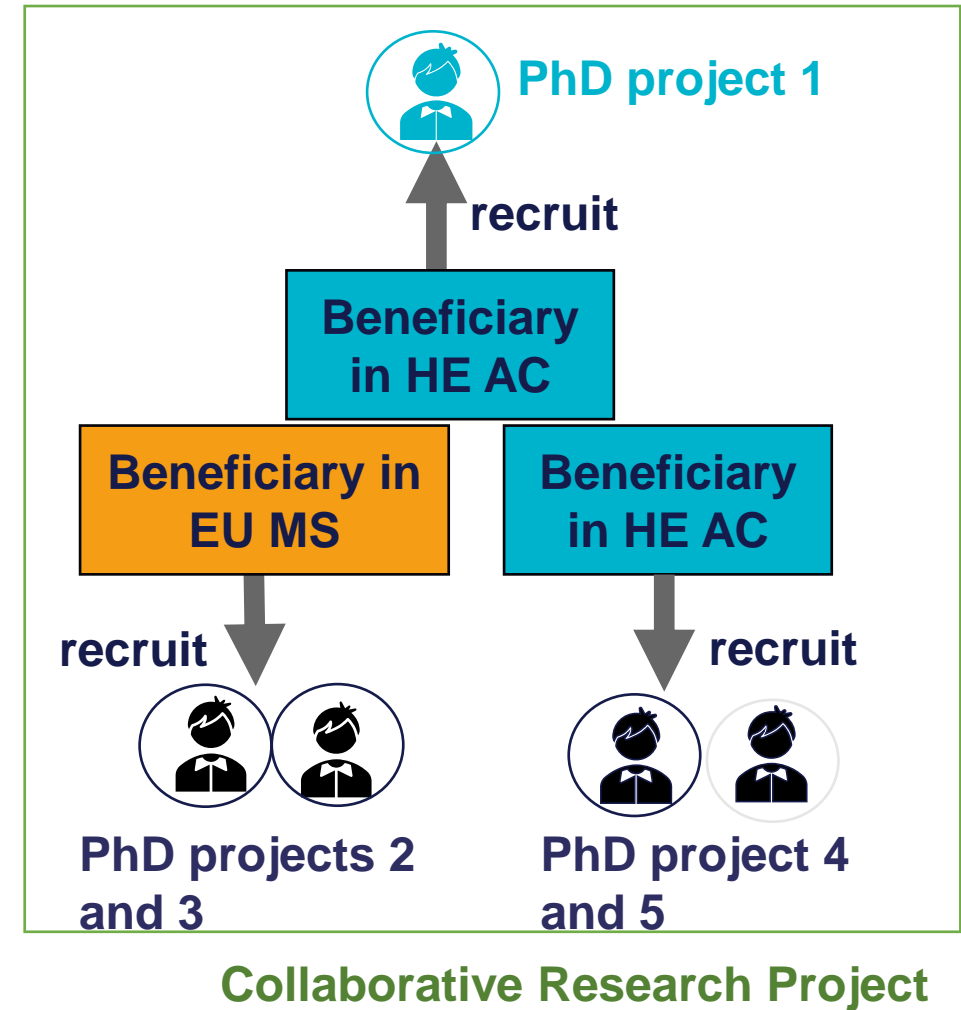
The PhD students must be enrolled in a doctoral programme.



All projects must publish their vacancies on EURAXESS
Doctoral Candidates must be recruited on a full employment contract.

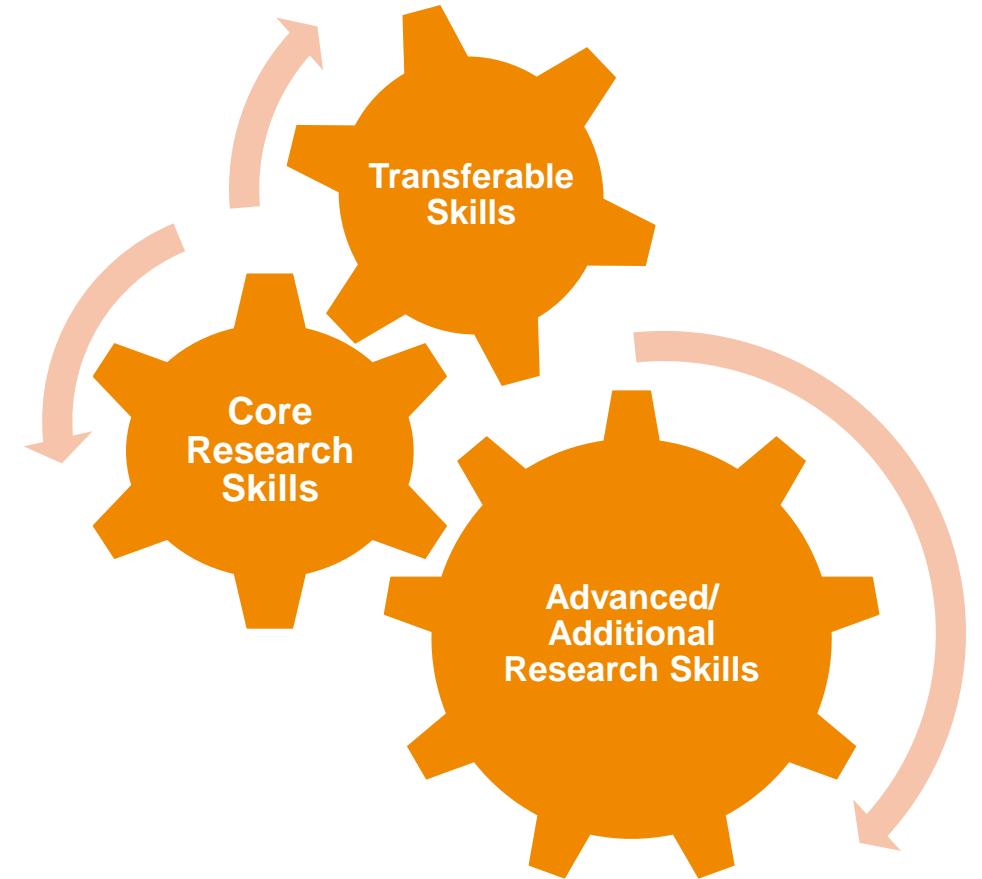
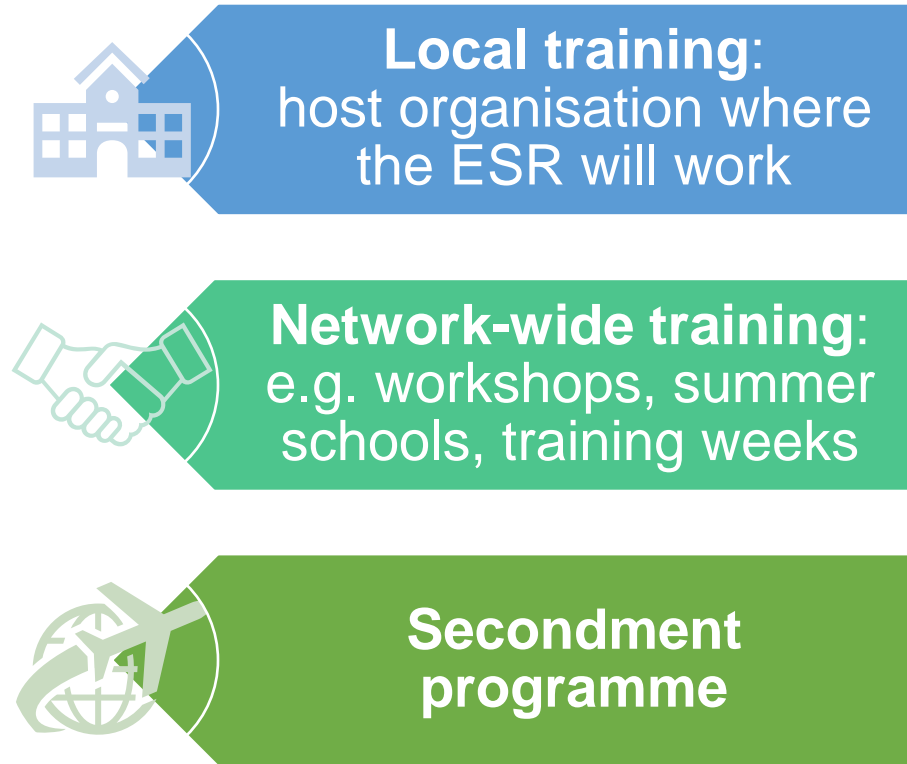


UK Research Office
Brussels



A Successful MSCA Doctoral Network

More than a research project – needs to include training aspects



Training through Research”

A Successful MSCA Doctoral Network

“Training through Research”

- Transferable **skills training** for DCs
 - **Communication**
 - **Research management**
 - **Societal outreach**
 - **Entrepreneurship**
 - **IPR, Open Science**
 - **Gender**
- Exposure to **non-academic** sector
- **Networking** events
- **Dissemination** activities
 - **Social media**
 - **Final conference,**
 - **Public engagement**



Three Types of Networks

Doctoral Network (DN)



Innovative doctoral training in academia and/or non academia



Secondments limited to 1/3 duration of the fellowship

- ☐ *All subject areas*
- ☐ *Apply to 8 subject panels*
- ☐ *Projects can include research visits, short trips, secondments*

Industrial Doctorates (ID)



Develop skills in industry and business by being jointly supervised by the academic and non academic organisations



50% of fellowship duration in the non academic sector



Mandatory join supervision from 2 sectors



No limit on secondment duration

Joint Doctorates (JD)



Integrated doctoral training leading to joint, double or multiple doctoral degrees and with the candidate selection and supervision jointly done by the degree awarding institutions



Researchers must be enrolled in a doctoral programme leading to the award of a doctoral degree in at least 2 EU MS/AC



Mandatory join supervision



No limit on secondment duration

MSCA Doctoral Network – Project & PhD Duration

Duration of projects

- Standard DNs, DN-ID
~ 4 years (48 months)
- DN-JDs
~ 5 years (60 months)

Duration of PhD Projects (on basis of full-time employment)

- Standard DNs, DN-ID
~ 3 – 36 months (usually 36 months)
- DN-JDs
~ 3 – 48 months

Change to previous 2022 MSCA DN Call!

[wp-2-msca-actions_horizon-2023-2024_en.pdf \(europa.eu\)](#),
p.85

Number of Person Months

- Maximum 540 person-months for Standard DNs, DN-IDs and DN-JDs
- ~15 Doctoral candidates for 36 months each
- ~11 Doctoral candidates for 48 months each (DN-JDs)

❖ Most PhD projects take longer than 3 years

- ❖ be clear on how the 4th year will work, including funding
- ❖ Think about implications for visas

❖ Number of requested Person-months must in line with project objectives and host capacity



UK Research Office
Brussels

Resubmission restriction

- **Applicants who have score below 80% in the DN 2022 call are not eligible to resubmit a “similar” proposal in the DN 2023 call**
- A “similar” proposal is defined as one that **differs from the current one in minor ways, and in which some of the present consortium members are involved.**
- REA has a system in place to flag similarities with previous proposals and may contact the applicants who should not have resubmitted, to ask them to explain how different their proposal(s) would be, compared to the previous submission(s).
- Proposals may be double-checked by some external experts for most critical cases.
- The final eligibility decision will then be taken by the REA Admissibility and Eligibility Committee appointed for the call evaluation



UK Research Office
Brussels

Call Timeline

All information for a successful application can be found on the [MSCA 2023 DN Call Webpage](#)

Action	Date (tentative)
Call opening	30 May 2023
Deadline for Submission	28 November 2023, <u>17:00 CET.</u>
Notification of applicants if their proposal has been successful	April 2024
Indicative Date for Signing the Grant Agreement	July 2024
Project Start	September 2024

https://rea.ec.europa.eu/funding-and-grants/horizon-europe-marie-sklodowska-curie-actions/msca-doctoral-networks_en



UK Research Office
Brussels

Submit Early, Submit Often

Commission collects proposals at Deadline

Eligibility of Researchers & Working time commitment

HORIZON-MSCA-2023-DN-01-01



Doctoral Candidate (DC) - Eligibility Criteria

Often referred to as Early Stage Researcher (ESR)

- Supported researchers must be a doctoral candidate i.e. not already in possession of a doctoral degree at the date of the recruitment.
- ESR must be enrolled in a doctoral programme leading to the award of a doctoral degree in at least one EU Member State or Horizon Europe Associated Country, and for Joint Doctorates in at least two.
- Industrial Doctorates, ESR must spend minimum 50% of fellowship at non-academic partner
- Recruited researchers can be of any nationality
- Recruited researchers must comply with the mobility rule

Mobility rule

- **They must not have resided or carried out their main activity (work, studies, etc.) in the country of the recruiting beneficiary for more than 12 months in the 36 months immediately before their recruitment date.**
- Compulsory national service, short stays such as holidays and time spent by the researcher as part of a procedure for obtaining refugee status under the Geneva Convention are not taken into account.



UK Research Office
Brussels

Working Time Commitment

Doctoral candidates are expected to work 100% of their time on the project activities

Researchers may opt to work part-time for personal or family reasons.

Requires approval from REA

Requests can be made at any stage of the grant implementation.

Cannot be used to circumvent the mobility rule.

Not included in the proposal

Requested during implementation period

The beneficiary should report costs as pro rata of the applicable full-time unit contributions.

Allowed

Personal reasons or family reasons

Not Allowed

Professional reasons

Not allowed

- Participating in another MSCA Award or in an other source of funding
- If it is circumventing the mobility rule
- If a suspension is more appropriate



UK Research Office
Brussels

Consortia Implementation

HORIZON-MSCA-2023-DN-01-01



Key Definitions

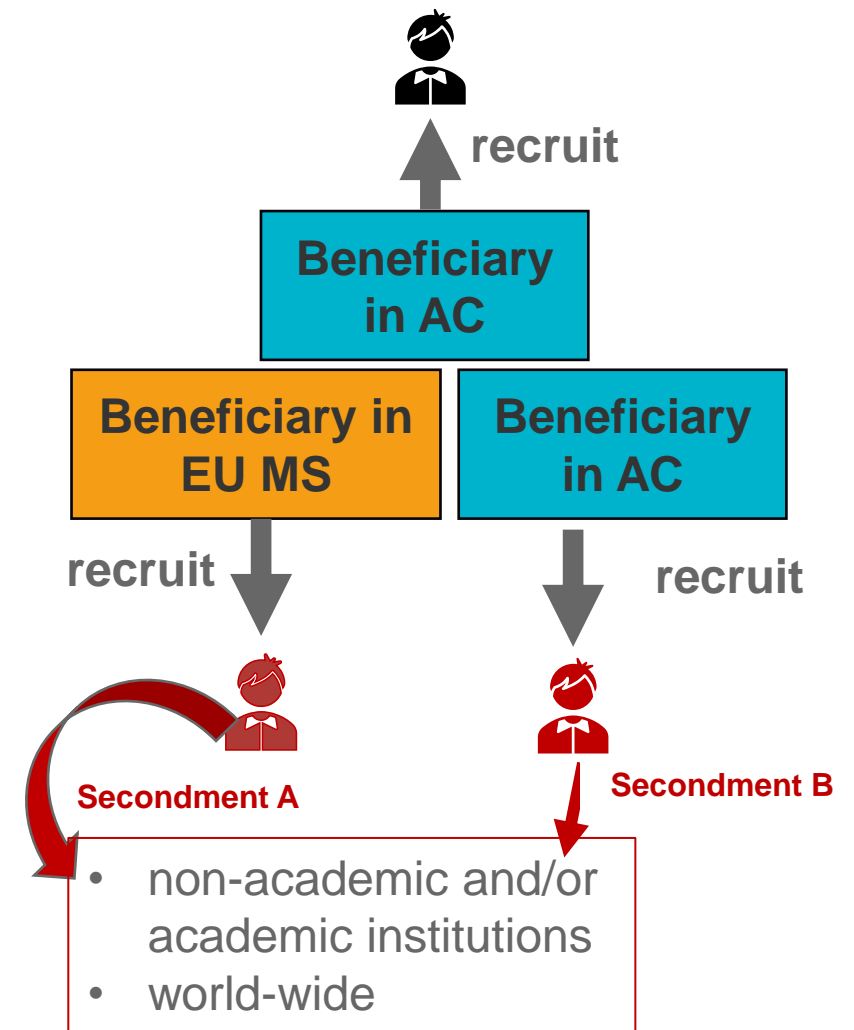
Beneficiaries

- Signatory to the Grant Agreement
- Full partner of the network
- Claim costs directly
- Contribute directly to the implementation of the joint training programme by recruiting ESRs, supervising, hosting and training them.
- Can also provide secondment opportunities
- Participate in Supervisory Board

Associated Partner organisations

- Do not sign the Grant Agreement
- Do not recruit DCs
- Do not claim costs directly (through the beneficiary)
- **Provide training and host DCs during secondments**
- Participate in Supervisory Board
- **No longer need to provide a letter of commitment! However, clearly indicated in proposal.**

CHANGE to previous years – [Guide for Applicants](#), p.13



Associated Partners:

- Can be established anywhere in the world, from any sector.
- Provide training opportunities

Collaborative Research Project

Associated Partners (AP)

Play an integral role in enriching the training experience of a researcher

- Play a key role in the implementation of the action by **hosting of secondments** and or by **providing other training and research opportunities**
- Can be **established anywhere in the world** and be from **any sector**
- Fully included in Part B of the proposal under the appropriate sub-headings
- **No letter of commitment needed**
- Beneficiaries can use their **institutional unit costs** to **reimburse the costs** of the AP hosting secondments and/or providing training activities.
- If they have their own source of funding, they are able to recruit Doctoral Candidates (Switzerland)

Summary of Tasks				
Role in the network	Recruitment of Researchers	Training and/or Hosting of Seconded Researchers	Participation in Supervisory Board	Directly Claims unit contributions
Beneficiary	✓	✓	✓	✓
Associated Partner	x	✓	✓	x



UK Research Office
Brussels

Doctoral Networks - Secondments

“Training through Research”

- **Highly recommended to supplement and complement training of DCs!**
- During their secondment, researchers receive supervision and training at the premises of the receiving beneficiary or partner organisation.
- Must be detailed in the proposals – *please refer to proposal template*:
 - Percentage of time spent at secondment hosting institutions
 - Goals of secondments
- Secondment costs
 - Costs for secondments 6 months or less covered by institutional costs (**at least** travel, visa and accommodation).
 - Longer secondments can also be covered in this way, if necessary.

Secondments can take place anywhere in the world.

Secondments can take place in the academic and non-academic sectors.

Secondment duration:

Standard MSCA DN:

-Maximum 1/3 fellowship duration

MSCA DN-ID, MSCA-JD:

No limitation on secondment duration



UK Research Office
Brussels

The Budget

How the funding works

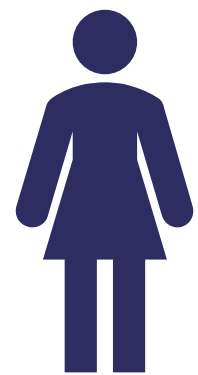
HORIZON-MSCA-2023-DN-01-01



Monthly Unit Cost

Maximum number of Person-months you can request: 540

- Maximum duration of fellowship:
- Standard DN, DN-ID: 3-36 person-months
 - DN-JD: 3-48 person-months



Monthly EC contributions per recruited Doctoral Candidate (“Person-month”)

Contributions for recruited researchers Per person-month					Institutional unit contributions Per person-month	
Living Allowance	Mobility Allowance	Family Allowance*	Long-term Leave Allowance*	Special Needs Allowance*	Research, training and networking contribution	Management and indirect contribution
EUR 3 400	EUR 600	EUR 660	EUR 4 000x % covered by the beneficiary	Requested unit x (1/number of months)	EUR 1 600	EUR 1 200

* Only if applicable.



UK Research Office
Brussels

Contributions for the recruited researcher

Research &
training costs

Covering
costs for the
hosting
institution

ESR Unit Costs

Contributions for recruited researchers Per person-month

Living Allowance*	Mobility Allowance	Family Allowance**
EUR 3 400	EUR 600	EUR 660

*multiplied by the country correction coefficient (CCC)

** can be applied at any time (as an when needed)

Researcher Unit Costs (ESR allowances)

- Living allowance subject to Country Correction Coefficient - **136,9%% for the UK**. EC contribution to **gross** salary costs of the researcher
- If paid out together as salary, living allowance, mobility allowance and family allowance (if applicable) subject to compulsory deductions under national law (e.g. employer and employee social security contributions; direct taxes...)

Institutions strongly advised to explain how the salary will be calculated

- UK institution apply a conservative exchange rate
- Protects the institution and fellow from fluctuations
- This usually leads to an underpayment, corrected at the end of the fellowship with a lump sum payment

ESR Unit Costs

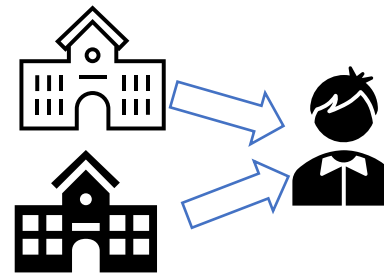
*multiplied by the country correction coefficient (CCC)

Contributions for recruited researchers Per person-month	
Living Allowance*	
EUR 3 400	

Industrial Doctoral and Joint Doctorates:

CCC needs to be considered when calculating the requested ESR unit costs for the living allowance

- ESR employed 100% by a beneficiary and sent to other beneficiaries or partner organisations
- When calculating the requested award, only **one country correction co-efficient must be used**



- ESR recruited separately by each beneficiary for a specific duration
- When calculating the requested award, **different country correction co-efficients for each stay must be used**

ESR Unit Costs

** can be applied at any time (as an when needed)

Contributions for recruited researchers Per person-month

Mobility Allowance	Family Allowance**
EUR 600	EUR 660

Mobility Allowance

- covers costs related to researcher's mobility (e.g. relating to travel and accommodation).
- It covers private costs of the researcher

Family allowance

- researcher has family obligations or acquires family obligations during the action duration
- Family obligations means persons linked to him/her by
 - (i) marriage,
 - (ii) a relationship with equivalent status to a marriage recognised by the legislation of the country or region where this relationship was formalised;
 - (iii) dependent children who are actually being maintained by the researcher
- requested when/if the need arises

ESR Unit Costs

** can be applied at any time (as an when needed)

Contributions for recruited researchers Per person-month	
Long-term Leave Allowance**	Special Needs Allowance**
EUR 4 000x % covered by the beneficiary	Requested unit x (1/number of months)

Long-Term Leave allowance

- Only when leave exceeds 30 days for reasons other than annual leave
- contributes to the beneficiary's pay obligations related to researchers' leave, including maternity, paternity, parental, sick or special leave, longer than 30 consecutive days.
- Requested when/if the need arises
- All other allowances and contributions are set to '0'
- % covered by the beneficiary will depend on national legislation and internal policies

Special Needs Allowance

- Contributes to the additional costs for the acquisition of special needs items and services for researchers with disabilities,
- Their participation in the action may not be possible without them
- Requested when/if the need arises
- These special needs items or services shall not have been funded from another source (e.g. social security or health insurance).
- Likely to be managed by the beneficiary and claimed according to internal policies

Institutional unit costs

Institutional unit contributions Per person-month	
Research, training and networking contribution	Management and indirect contribution
EUR 1 600	EUR 1 200

Research, Training and Networking costs (RTN)

- Covers costs related to research and innovation related activities of the project,
 - training and networking activities that contribute directly to the researcher's career development
 - professional costs of the researchers (travel expenses, visa costs, NHS surcharges, relocation costs related to starting the fellowship)
 - **costs for research expenses**
 - costs arising from optional secondments
- Activities must contribute to the research and the training programme
- Managed by the host institution according to usual internal policies e.g. Travel policy, Purchase policy etc.

Examples of Research Training and Networking Costs

Costs for research expenses

Costs for visa-related fees and travel expenses
to take up the project

**Costs of secondments lasting 6 months or less
(minimum travel and accommodation)!**

Conferences, workshops, networking meetings

Field work

Research trips

Training

Seminars

Lab materials/consumables

Books/Materials

Publication Costs

Library Records

Language Courses

Software

Consumables

Membership fees

[Transferable skills](#)

[The Entrepreneurship Competence Framework](#)



UK Research Office
Brussels

Institutional unit costs

Institutional unit contributions Per person-month

Management
and indirect
contribution

EUR 1 200

Management and Indirect Costs

- **Covers general costs of the host institution**, connected to organising and implementing the fellowship (administrative/financial management, logistics, ethics, HR, legal advice, documentation etc.)
- Are managed by beneficiaries according to usual policies.
- **Agreement in place to set out redistribution of funds to associated partners** (secondment hosts, research visit hosts)
- **Can be moved between beneficiaries and redistributed to partners (needs to be agreed in the Consortium Agreement)**
- usual practice for the coordinator to retain larger proportion of management costs – **best to discuss the budget early.**



UK Research Office
Brussels

How to cover secondment costs?

Contributions for recruited researchers Per person-month

Normal practice during secondments is for the recruited researchers to keep their contract with the sending institution.

Institutional unit contributions Per person-month

Research, Training and Networking contribution	Management and indirect contribution
EUR 1 600	EUR 1 200

- Secondments in DN of six months or less which require mobility from the place of residence must be financed using the Research, Training and Networking contribution in order to prevent an unreasonable financial burden for the recruited researchers.
 - at least the travel and accommodation costs.
 - other costs: visa costs, subsistence costs....
- Longer secondments can also be supported in the same way.
- Cost the secondment host occurs as part of the action can be covered by the Management and Indirect Costs (agreement in place)

40% Rule

- **No more than 40.0% of the total EU financial contribution allocated to beneficiaries in the same country** or to any one International European Research Organisation or International Organisation.
- Concerns the **total amount of the budget allocated to a country** -- not the number of person-months!
- Take the **country correlation coefficients** into account when calculating the budget!
- Proposals not complying with this condition will be considered ineligible.
- Must be followed **during project implementation!**



Tuition Fees and Doctoral Networks

How will International Tuition Fees affect recruitment and implementation of the DN?

- It is up to institutions to determine the fee charged
- For MSCA awards, guidance on tuition fees can be found in the document below:
 - https://ec.europa.eu/assets/eac/msca/funded-projects/how-to-manage/funded-projects/how-to-manage/general_documents/frequently_asked_questions_to_the_marie_curie_actions_financial_guidelines.pdf
- PhD Fellows should be treated on equivalent terms as staff members.
- The PhD Fellow should under no circumstance be asked to use their researcher allowances to pay for tuition (or visa fees).
- Visa fees are eligible costs under **Institutional Costs budget**
- Practice varies by institution: waived/reduced fees or claimed fees



UK Research Office
Brussels



Visa Costs

- **Non-UK nationals will need a UK entry visa**
Keep this in mind when recruiting and/or planning secondments
- **Visa-related costs and NHS Surcharge should be covered by the RTN budget**
- Costs for family members can be claimed via the family/mobility allowance



UK Research Office
Brussels

Visa for MSCA Doctoral Candidates:

- Endorsed funders route via UKRI
- contact globaltalentvisa@ukri.org
- [MSCA Doctoral Networks and COFUND: Navigating the UK Immigration Landscape – UKRO](#)
- [Explore Visa Options | Global Talent \(greattalent.campaign.gov.uk\)](https://greattalent.campaign.gov.uk)

Visiting/seconded researchers:

- requirements will depend on the length of stay and activities to be undertaken
- <https://www.gov.uk/entering-staying-uk/rights-foreign-nationals-uk>
- [Slides from the 'Navigating the UK Immigration Landscape: Supporting Short-term Mobility to the UK' Webinar are Available – UKRO](#)

Consult our factsheet on MSCA researchers coming to the UK:

- <https://www.ukro.ac.uk/publications/researchers-coming-to-the-uk-on-marie-sklodowska-curie-actions/>

Proposal Writing

Things to think about

Tomorrow's webinar will focus
on the evaluation criteria and
will give further advice



Getting started

- **What is the over-arching research question**
 - **How can this be achieved through the individual PhD projects**
- Have clear objectives
 - are the pertinent to the topic
 - Are the measurable, verifiable and realistic
- How does this go beyond the current state of the art
- What **skills are needed by researchers in the proposed research area**
 - what will they be in 4 years, 10 years from now
 - long term employability
- How will the network contribute to Europe's innovation landscape
- How will the network increase doctoral training within and beyond the EU
- Long term sustainability
- How will the results will be **exploited** and **communicated**
- Consideration of **research data management** and **gender dimensions**



UK Research Office
Brussels



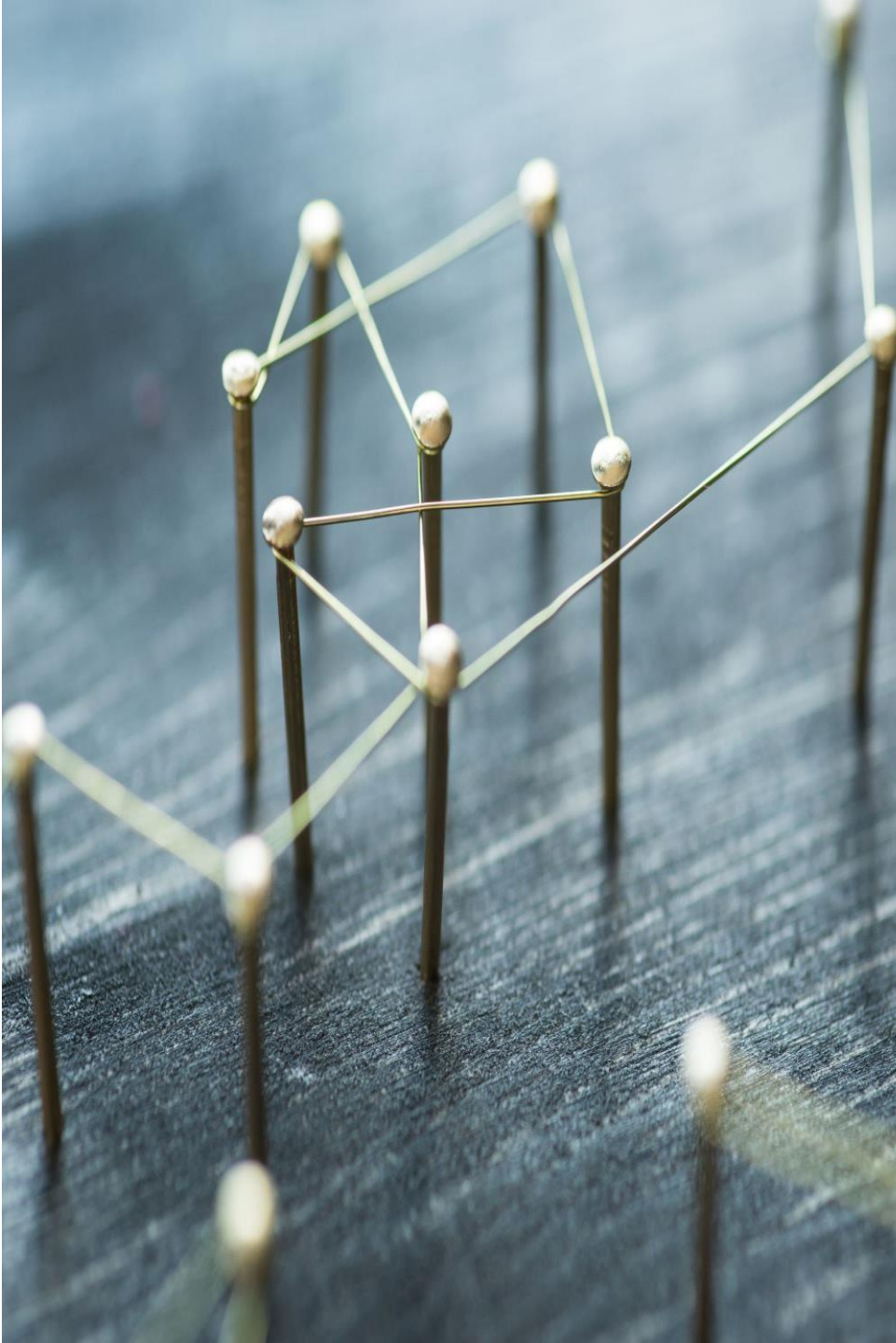
Setting up your consortium

- As early as possible, agree with your partners on:
 - How does each PhD project fit into the overall project?
 - Research resources, supervision, training provision(s)?
 - Financial allocation (budget)
 - Governance and monitoring structure of the consortium

- Simple tables and Gantt charts can help

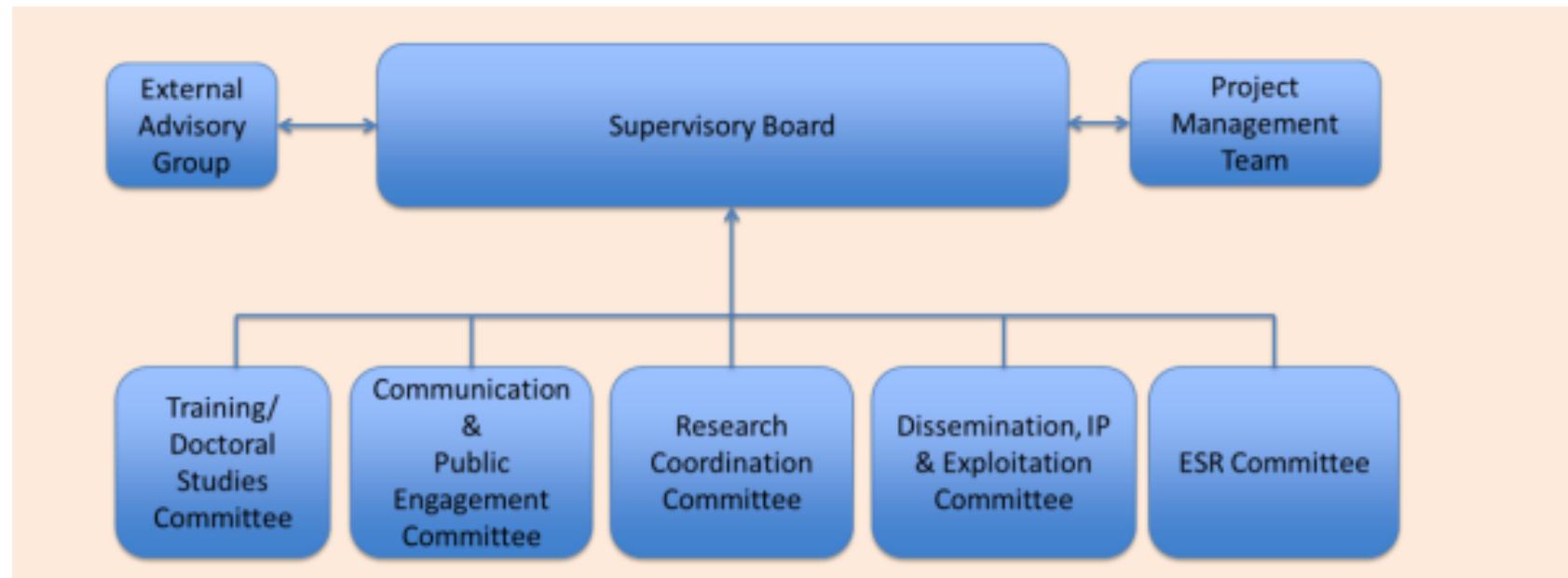
Consortium Members (CM)	Scientific Objectives (SO)			
	SO1	SO2	SO3	...
CM1	X			
CM2		X		
...				

Consortium Members (CM)	Required Research Infrastructure (RI)			
	RI1	RI2	RI3	...
CM1			X	
CM2	X			
...				



Management structure and organisation of the MSCA DN

- As early as possible, agree on:
 - the **management structure** and **organisation of the network**
 - the **roles** of the different actors,
 - **modus operandi** (including project monitoring and decision making)



Finding partners

- Use the [MSCA matchmaking platform](#)
- Use the [Partner Search function](#) on the Call Webpage
- Use your existing networks
- Contact potential partners - ask yourself:
 - Is my internet presence up-to-date?
 - Am I clear on what I'm contributing to the project?
- Check [Previous Projects](#) for potential collaborators



UK Research Office
Brussels

Cross-cutting issues & Guidelines for supervision



Gender and Intersectionality

Renewed emphasis on Equality, Diversity and Inclusion

Every cell is sexed, everyone has a gender

Adds a valuable dimension to research and can take it in a new direction

Aims to eliminate gender inequalities and intersecting socio-economic inequalities

Makes research more responsive to social needs

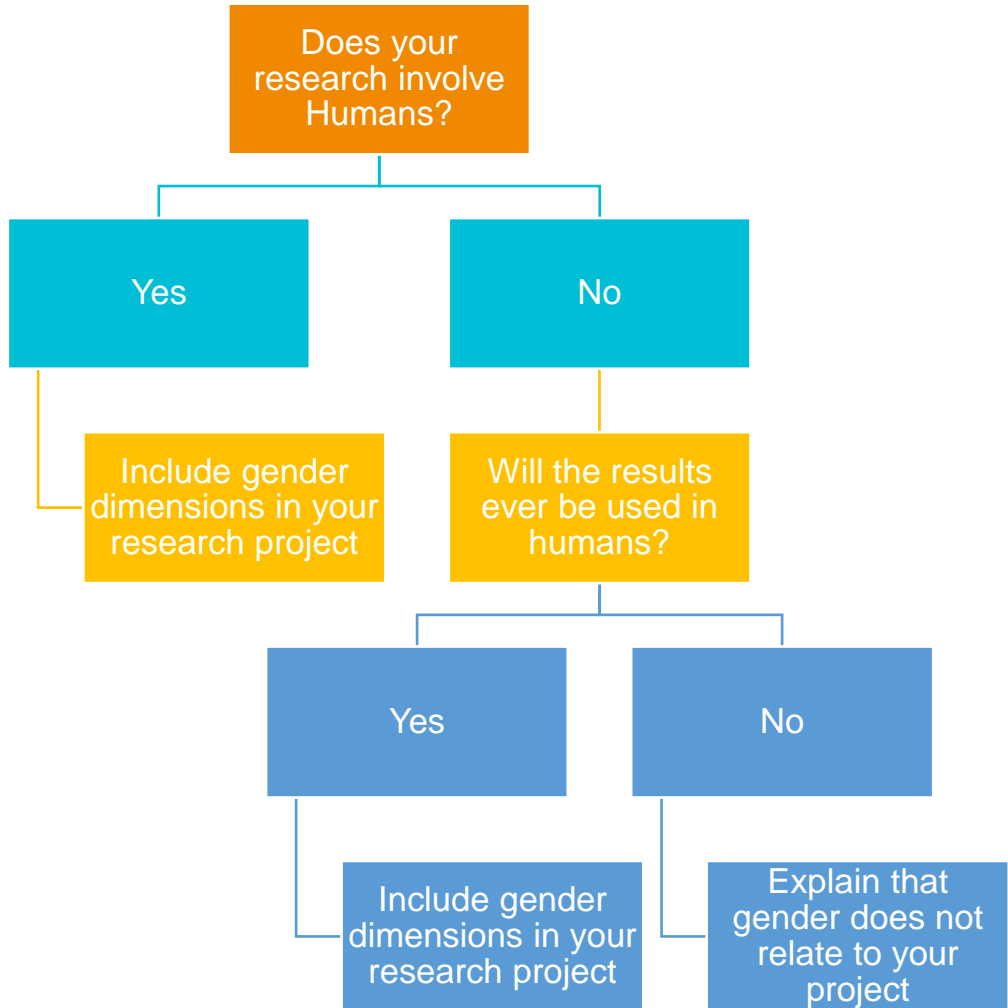
Enhances societal relevance research and outputs

Ensures excellence and quality in outcomes and enhancing sustainability



UK Research Office
Brussels

How Do You Know If Gender Is Important?



The gender dimension of the research project will be evaluated

Open Access

Encouraging uptake of Open Science Practices

Enhance researcher skills in Open Science and support reward systems

Open access to scientific publications as well as to data

Immediate open access via repository at the latest upon publication under open licence

All research data must be managed in line with FAIR principles, with data management plan as a standard deliverable

Open access to research data via repository under principle ‘as open as possible, as closed as necessary’

The use of and quality of open science practises is evaluated.



UK Research Office
Brussels



Dissemination, Exploitation and Communication

What do you do with your results...

Dissemination

Promotion and raising awareness of project results

Exploitation

Using the results, such as for commercial purposes or in public policymaking

Communication

Making your research activities known to society throughout project life span – **Public Engagement**

Evaluated under Impact

Institutions often have teams that can help/support these activities



UK Research Office
Brussels



Things to Think About

Be creative and consider all options regarding dissemination, communication and exploitation

Link to training & research objectives and activities

Who is the target audience and why

Detail the activities you will use and why

One way vs two way communication

Achievements, expectations, project activities, lessons learned,

Activities occur throughout the entire project's lifetime – not just at the end



UK Research Office
Brussels

Addressing D,E & C

	Objective	Focus	Target Audience
Communication	Researching out to society Demonstrating impact and benefits	Informing about and promoting the project and the results/successes	Multiple audiences
Dissemination	Transfer of knowledge and results Aim to enable others to use and take up results	Ensure results are available and able to be used by others	Those that are interested in the potential use of the results
Exploitation	Use of project results through scientific, economical, political or societal exploitations Turn R&I actions into concrete value and impact for society	Make concrete use of results	People/organisations, including project partners that can make concrete use of the results User groups



Expected Impact

Steps towards the achievement of the expected impacts of the project over time



- Begins with the results, through to dissemination, exploitation and communication
- Maps the contribution to the expected outcomes in the destination and wider work programme
- Depending on the project may address only 1 or more of the three expected impacts

Related Guidelines



Recruitment and Selection of Doctoral Candidates

- The principles of the [European Charter for Researchers](#) and [Code of Conduct](#) for the Recruitment of Researchers (Charter and Code) promote open, merit-based and transparent recruitment and attractive working and employment conditions.
- In line with the [Charter](#) and [Code](#), all MSCA-funded projects are encouraged to:
 - have open, merit-based and transparent recruitment campaigns
 - embrace diversity and take measures to facilitate mobility and counter-act gender and disability-related barriers to it.
 - facilitate access by researchers at risk
- **Beneficiaries will be responsible to select and recruit researchers, and will need to meet certain conditions in line with the [Charter](#) and [Code](#):**
 - publication of vacancies (e.g. on [Euraxess portal](#))
 - Clear, transparent and merit-based recruitment procedures
 - Advertisements must be clear on length of appointment of researchers; remuneration; working conditions...

....

European Charter for Researchers

Set of general principles and requirements which specifies the roles, responsibilities and entitlements of researchers as well as of employers and/or funders of researchers.

Code of Conduct for Recruitment

a set of general principles and requirements that should be followed by employers and/or funders when appointing or recruiting researchers.



UK Research Office
Brussels

Knowledge of the Charter and the Code are essential for a successful proposal -
[MSCA DN Standard Application Template](#)

Attractive Working and Employment Conditions

Good Research Environment

Declaration on Sustainable Researcher Careers

A joint declaration on sustainable researcher careers

By Marie Curie Alumni Association (MCAA) and the European Council of Doctoral Candidates and Junior Researchers (Eurodoc)

The European Charter for Researchers

Is a set of general principles and requirements which specifies the roles, responsibilities and entitlements of researchers as well as of employers and/or funders of researchers

The Code of Conduct for Recruitment

Set of general principles and requirements that should be followed by employers and/or funders when appointing or recruiting researchers



UK Research Office
Brussels



MSCA Guidelines for Supervision

all MSCA-funded projects are encouraged to follow the recommendations outlined in the [Guidelines for MSCA supervision](#)

In line with the principles set out in the Charter and Code, MSCA beneficiaries must ensure adequate supervision or mentoring and appropriate career guidance

A non-exhaustive [list of recommendations](#), complemented by other activities, that are expected to be implemented on a best-effort basis.

Emphasise the [importance of sufficient training](#) and professional development for supervisors

Emphasise the [need for transparent procedures](#) to facilitate conflict resolution in the event of disputes



UK Research Office
Brussels

<https://op.europa.eu/en/publication-detail/-/publication/bb02d56e-9b3c-11eb-b85c-01aa75ed71a1/language-en>



MSCA Green Charter

- constitutes a [code of good practice](#) for all recipients of MSCA funding – both individuals and institutions
- promotes the **mainstreaming of environmental considerations in all aspects of project implementation.**
- sets out to reduce the carbon footprint of MSCA projects, increase awareness on environmental issues, promote sustainable behaviours and policies.
- Should be addressed in 2023 MSCA DN proposal – *see tomorrow's session on the 2023 MSCA DN Evaluation & Submission criteria.*



UK Research Office
Brussels

<https://op.europa.eu/en/publication-detail/-/publication/2bfb0d9-9b3c-11eb-b85c-01aa75ed71a1/language-en>



Guidelines for Inclusion of Researchers at Risk

All MSCA applicants and beneficiaries are encouraged to take measures to facilitate the participation of these researchers in MSCA-funded projects.

- Provides useful background on researchers at risk and recommend ways to improve their recruitment
- Sets out recommendations on measures to follow to increase access for researchers at risk
- Are not part of the beneficiaries' contractual obligations
- should not compromise the nature of the MSCA programme



UK Research Office
Brussels

<https://ec.europa.eu/research/mariecurieactions/about-msca/guidelines-for-inclusion-of-researchers-at-risk>

Upcoming Events

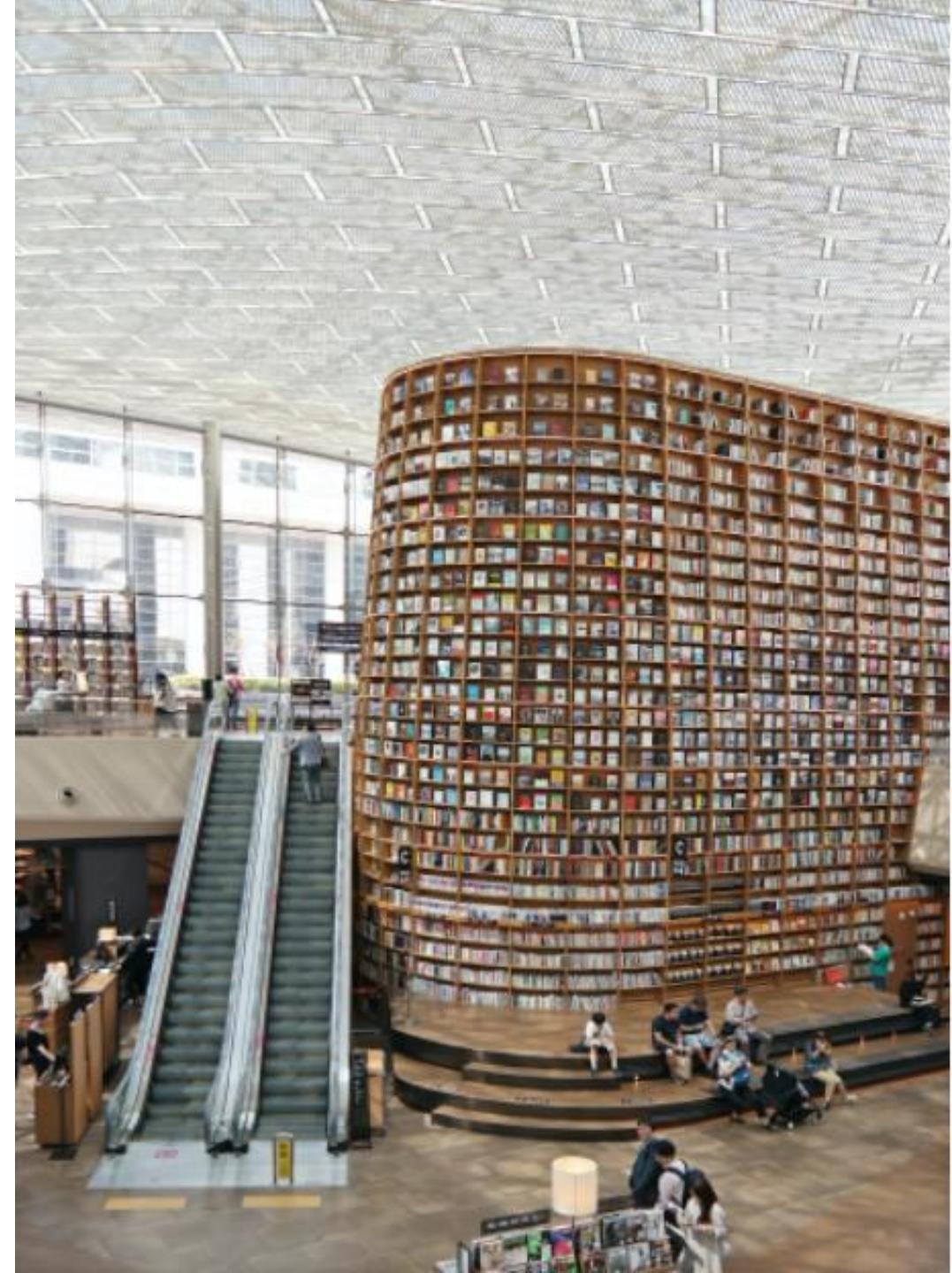
Slides and recordings will be uploaded

MSCA DN Information for Applicants Webinars

- [Session 1: MSCA DN: Overview and Eligibility Rules](#), 13 June 2022 10:00 -11:30 am UK time.
- [Session 2: MSCA DN: Practical Matters](#), 14 June 2022 10:00-11:30 am UK time.
- [Session 3: MSCA DN: Process for Submission and Evaluation](#), 15 June 1:00-2:30 pm UK time.



UK Research Office
Brussels





UK Research Office
Brussels



European Research Council
Established by the European Commission

Thank you

Questions?



@_UKRO_



UK Research Office (UKRO)



Standard Doctoral Networks Consortium eligibility

Multidisciplinary, international consortia

- Consortium must include:
 - at least **three independent legal entities**, established in a different EU Member State or Horizon Europe Associated Country
 - at least **one of them established in an EU Member State**
- Duration of projects:
 - 4 years (48 months)
- Fellowships:
 - 3 - 36 months (usually 36 months)
- Maximum:
 - **540 per-person months**



UK Research Office
Brussels

Change compared to previous Call



Industrial Doctorates Consortium eligibility

Doctoral candidates must spend at least 50% of their fellowship duration in the non-academic sector

- Consortium must include:
 - at least **three independent legal entities**, each established in a different EU Member State or Horizon Europe Associated Country
 - at least **one of them established in an EU Member State**
 - at least **one of the them must be from the academic sector**
 - at least **one must come from the non-academic sector**
- Mandatory joint ESR supervision by both academic and non-academic sector.
- Duration of projects:
 - 4 years (48 months)
- Fellowships:
 - 3 - 36 months (usually 36 months)
 - Employment Contract can be split between beneficiaries
- Maximum:
 - **540 per-person months**

Change compared to previous Call

Academic Sector

Public or private higher education establishments awarding academic degrees, public or private non-profit research organisations for whom one of the main objectives is to pursue research or technological development.

Non-Academic Sector

Any socio-economic actor not included in the academic sector and fulfilling the requirements of the Horizon 2020 Rules for Participation (Regulation No 1290/2013). This includes all fields of future workplaces of researchers, from industry to business, government, civil society organisations, cultural institutions, hospitals etc.

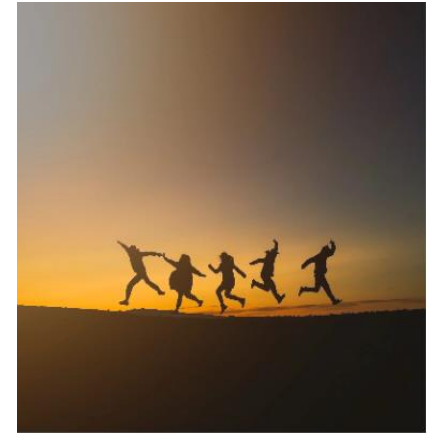
The European Commission determines an institution's legal status during the legal validation process.

As this encoding will be used to determine funding eligibility, you should check the legal status of your consortium partners as early as possible!

Joint Doctorates consortium eligibility

Creation of a joint doctoral programmes that delivers joint, double or multiple degrees

- Consortium must:
 - include **at least three independent legal entities**, each established in a different EU Member State or Horizon Europe Associated Country
 - at least **one of them established in an EU Member State**.
 - At least **three independent legal entities must be entitled to award doctoral degrees**.
 - At least **two of the institutions conferring a joint, double or multiple doctoral degree** must be established in an **EU Member State and/or Horizon Europe Associated Country**
- Recommended size: 4-8 beneficiaries
- Joint selection, supervision, monitoring and assessment of ESRs through a joint governance structure
- Pre-agreement to award a joint degree required at the time of submission.
- Duration of projects:
 - 4 years (48 months) - **5 years (60 months)**, in cases with 48 month fellowships
- Fellowships:
 - 3 - 48 months (usually 36 months)
 - ESR likely to split their stay between beneficiaries to fulfil joint doctoral programme requirements
- Maximum:
 - **540 per-person month ESR contract**: up to 48 months is possible



Joint Doctorates

Joint Degree

- Single diploma issued from at least 3 HEIs offering an integrated programme and recognised officially in the countries where the degree-awarding institutions are located

Double/multiple degrees

- Two or more separate national diplomas issued by two or more HEIs and recognised officially in the countries where the degree-awarding institutions are located



UK Research Office
Brussels

Letters of pre-agreement to deliver joint/double/multi degrees must be included in proposal (template in [2023 MSCA DN Standard Application template](#))

Three MSCA DN Schemes

All information for a successful application can be found on the [MSCA 2023 DN Call Webpage](#)

	The Basics: supervision and inclusion of the academic/non-academic sector	Enrolled in PhD programmes	Minimum Number of beneficiaries	Minimum MS (beneficiaries)	Max. no Person Months	Max Project Duration	Fellowship Duration
Standard Doctoral Networks (DN)	<ul style="list-style-type: none"> Consortium of 3 beneficiaries located in EU MS/HE AC Inclusion of non-academic sector encouraged, but not mandatory 	in at least one PhD programme in an EU MS or HE AC	3	1	540	48	3-36 months
Industrial Doctorates (DN-ID)	<ul style="list-style-type: none"> Consortium of 3 beneficiaries located in EU MS/HE AC Inclusion of non-academic partner mandatory Doctoral candidates must spend at least 50% of their time in non-academic sector Joint supervision by the academic and non-academic partner 		3	1	540	48	3-36 months
Joint Doctorates (DN-JD)	<ul style="list-style-type: none"> Consortium of 3 beneficiaries located in EU MS/HE AC Joint supervision by at least two supervisors from the academic sector 	In at least two PhD programmes in two EU MS or HE AC.	3	1	540	60	3-48 months

New for the 2023 call