

# New European Bauhaus

## What is the New European Bauhaus?

The New European Bauhaus (NEB) is a policy and funding initiative launched by the European Commission in 2021. NEB aims to realise the [European Green Deal](#) with a bottom-up, transdisciplinary approach to create inclusive and tangible green transformation. In practice, NEB works to foster solutions for transforming the built environment and lifestyles under the green transition and looks for solutions that are not only sustainable, but also inclusive and beautiful. In line with this, the initiative has three fundamental values: **sustainability**, **aesthetics**, and **inclusion**, and works by:

- engaging people at a grassroots level, focusing on neighbourhoods
- providing tools and guidance for implementing NEB values and principles
- offering tailor-made solutions for different communities
- incorporating the views of various stakeholders into the process of design and implementation
- prioritising people and social inclusion but also the economy to boost competitiveness and EU strategic autonomy

Although briefly considered as a new EU Mission, it was redesigned as a facility and established as a cross-cluster issue in the [Horizon Europe 2025-2027 Strategic Plan](#) due to its cross-cutting nature. In March 2024, the NEB facility was announced, endorsed by Member States, and adopted by the College.

The facility covers the full cycle of implementation of solutions for neighbourhoods by combining two components. The first component is a **Research and Innovation** part, funded by €120 million per year from **Horizon Europe**. This component has three focus areas: 1) connecting the green transformation, social inclusion and local democracy; 2) circular and regenerative approaches for the built environment; and 3) innovative funding and new business models for the transformation of neighbourhoods. The second component is a **Roll-out** part, which will be delivered through synergies with other EU programmes and combines EU, public and private funding to deliver innovative solutions, support education, re- and up-skilling, provide capacity building, and more.

## The NEB Community – who is involved?

The NEB community includes:

- the initiative's [official partners](#). Networks, associations and organisations who help build and inspire these communities and serve in an advisory role and as essential interlocutors for the initiative.
- members of the [High-Level roundtable](#). These are advanced thinkers and practitioners in their field bringing inspiration and acting as community ambassadors for the NEB. Their visions for the initiative can be found [here](#).
- the initiative's [friends](#). These are networks, associations and organisations committed to acting as promoters and key interlocutors throughout the NEB initiative.
- National Contact Points (NCP) to promote the NEB agenda and coordinate efforts to implement the initiative at national level.
- the NEB prize winners and finalists
- the beneficiaries of NEB calls
- members of the European Commission

## The NEB Lab

The **NEB Lab** is a co-creation space enabling NEB community teams to self-organise for the delivery of projects. It focuses on connecting people and learning from each other, and manifests NEB into concrete actions with two missions:

1. to create enabling conditions for the green transition, such as new tools, frameworks, policy recommendations, etc.
2. to trigger tangible transformation on the ground

The NEB community and EU institutions autonomously develop projects proposals for the NEB Lab. Proposals become NEB Lab projects following a process that ensures a clear purpose, transparency towards the community and well-defined beneficiaries. The NEB Lab then provides:

- ensurance of coherence across projects and NEB principles
- supports project development by challenging proposals, connecting people with the community and institutions for additional support and bridging local action with the European and international dimension
- offers space for projects on a dedicated online platform, mentoring and communication support.

The NEB Lab does not provide funding for projects, though project teams can consider support and financing options, e.g. support in kind, EU, national, regional or local public funding, sponsorship.

## The NEB Academy

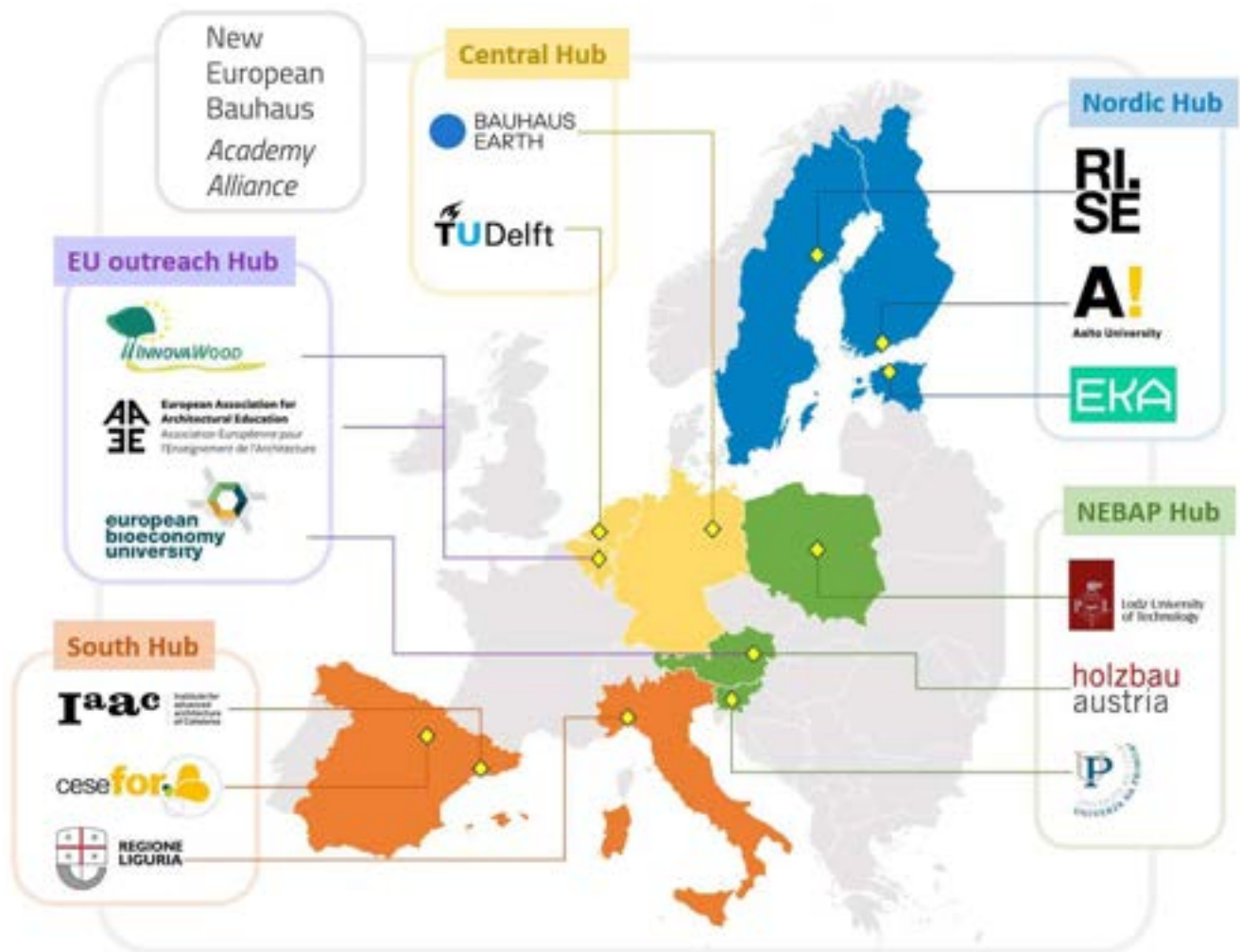
As a flagship of the **European Year of Skills**, the **NEB Academy** (NEBA) on skills for sustainable construction was launched in April 2024 and is financed by the EU's **Circular Bio-based Europe Joint Undertaking**. It combines the NEB values of sustainability, aesthetics and inclusiveness, accelerating the fair and green transformation of the building sector. The Academy addresses the need to upskill and reskill workers in the construction sector, with a special focus on increasing the quality and quantity of vocational training opportunities.

The first focus areas are identified knowledge gaps, including: the use of bio-based materials, digital technologies, and increased circularity in construction. To promote inter-regional exchange of skills and best practices, the Academy will:

- encourage the creation of NEB Academy Pioneer Hubs. To establish a Hub, interested NEB Partners (either existing education structures or newly formed consortia—that have taken early steps and wish to invest further in NEB Academy actions) are invited to register their activity by signing the **NEB Academy Pioneer Hubs Charter**. This is a self-committing action that does not entail financial support on behalf of the EU budget, and is the first step in setting up the NEB Academy structure.
- create a network of NEB Academy Hubs.
- provide a NEB Academy collaborative platform.

The **NEBA Alliance** is an international alliance of relevant educational actors and training providers that establishes Hubs with a regional coverage and/or expertise in specific topics. It runs a digital platform that serves as a matchmaker between learners and trainers, as well as an open directory and repository for NEBA certified training contents addressing bio-based, circular, regenerative, and long-life processes, concepts, and solutions with micro-credentials available. The NEBA Alliance, led by the Slovenian University of Primorska, is composed of 14 partners from Austria, Belgium, Estonia, Finland, Germany, Italy, the Netherlands, Poland, Spain, and Sweden.

Details of the actors in each Hub can be found **here**.



Source: NEBA Alliance. <https://neb.academy/alliance>

## Implementing the NEB core values and principles

The **NEB Compass** is a guiding framework for decision and project makers wishing to apply the NEB principles and criteria to their activities. The Compass proposes directions for the development of NEB projects and lays the foundation for more detailed assessment tools. It also describes the three core values of the initiative and traces the path for a project to become truly 'NEB'.

Building on the NEB Compass' deep understanding of the values and principles, the **NEB toolbox** provides a description of numerous tools that can be used for planning and designing NEB projects. It is most effective when used at the beginning of your project and supports with co-design through practical tools, workshops and good examples of how to implement the NEB values effectively. It was developed in the framework of the Support to the New European Bauhaus Local Initiatives, which, in 2023 provided technical assistance to 20 small and medium sized municipalities, supported by the **European Regional Development Fund**.

The **NEB Investment Guidelines** are a practical guide on how and why to apply the NEB core values and working principles in built environment projects, and in particular buildings, open spaces, and neighbourhoods. The guidelines consist of two main components: general advice to help investors, developers, and project owners understand what the NEB is and how it concretely links to the different aspects and stages of investment and project development; and concrete recommendations to help shape high-quality projects in line with the NEB values and principles.

## Applying for funding

The **Commission Communication** adopted on 15 September 2021 presents plans to build and mobilise EU funds to support pilot projects and turn the ideas of the NEB movement into reality.

Funding can be fully dedicated or contributing to the NEB call for proposals. In addition to [Horizon Europe](#), EU funding opportunities to support the achievement of the NEB objectives include the Erasmus+ programme, Digital Europe, Programme for the Environment and Climate Action (LIFE) and more. The different types of calls are presented according to the three main types of impact they seek:

- [places on the ground](#)
- [enabling environment for innovation](#)
- [diffusion of new meanings](#)

The Commission also invites EU Member States to mainstream the NEB core values in their strategies for territorial and socio-economic development, and mobilise the relevant parts of their recovery and resilience plans, as well as the programmes under cohesion policy to build a better future for everyone.

## Engaging with NEB

### [New European Bauhaus prizes](#)

There is a well-established annual competition for projects contributing to a more sustainable, inclusive and beautiful future to apply for the NEB prizes. The prizes are grouped into four categories to reflect the NEB transformation themes:

1. Reconnecting with nature
2. Regaining a sense of belonging
3. Prioritising the places and people that need it the most
4. Shaping a circular industrial ecosystem and supporting life-cycle thinking

In each category, there are two parallel competition strands:

1. Champions - existing and completed projects in line with the New European Bauhaus values and principles
2. Rising Stars - concepts by young talents under 30

### [NEB Festival](#)

An annual festival is organised to enable visibility for the change makers, to encourage them to share progress and results, and to foster the engagement of citizens. The NEB prize ceremony also takes place, highlighting the remarkable projects and ideas that embody the movement's ethos. In 2024, the theme of the hybrid festival was [‘Resourcing for All’](#), exploring topics such as shelter and living environments, land and water, fashion and human wellbeing in light of the changing environment.

### [Dashboard](#)

To discover more, users can access the dashboard, which is a dynamic and interactive map featuring the NEB projects and key actors across Europe and beyond.

## More information

UKRO will publish regular updates on the UKRO Portal and provide support to subscribers.

- [New European Bauhaus website](#)
- [Horizon Europe website](#)
- [New European Bauhaus Academy website](#)
- [Contribute to the NEB Academy, including calls](#)
- [Funding opportunities](#)
- [National Contact Points \(NCP\) for the NEB](#)
- [NEB Facility: Scoping document](#) (download)
- [NEB Investment Guidelines Factsheet](#)
- [Overview of EU funding opportunities to support the achievement of NEB objectives \(2023-2024\)](#)
- [Policy ecosystem relevant to NEB](#)
- [NEB upcoming events](#)
- [NEB social media](#)

UKRO Portal

- [UKRO Portal](#) (subscriber access required)