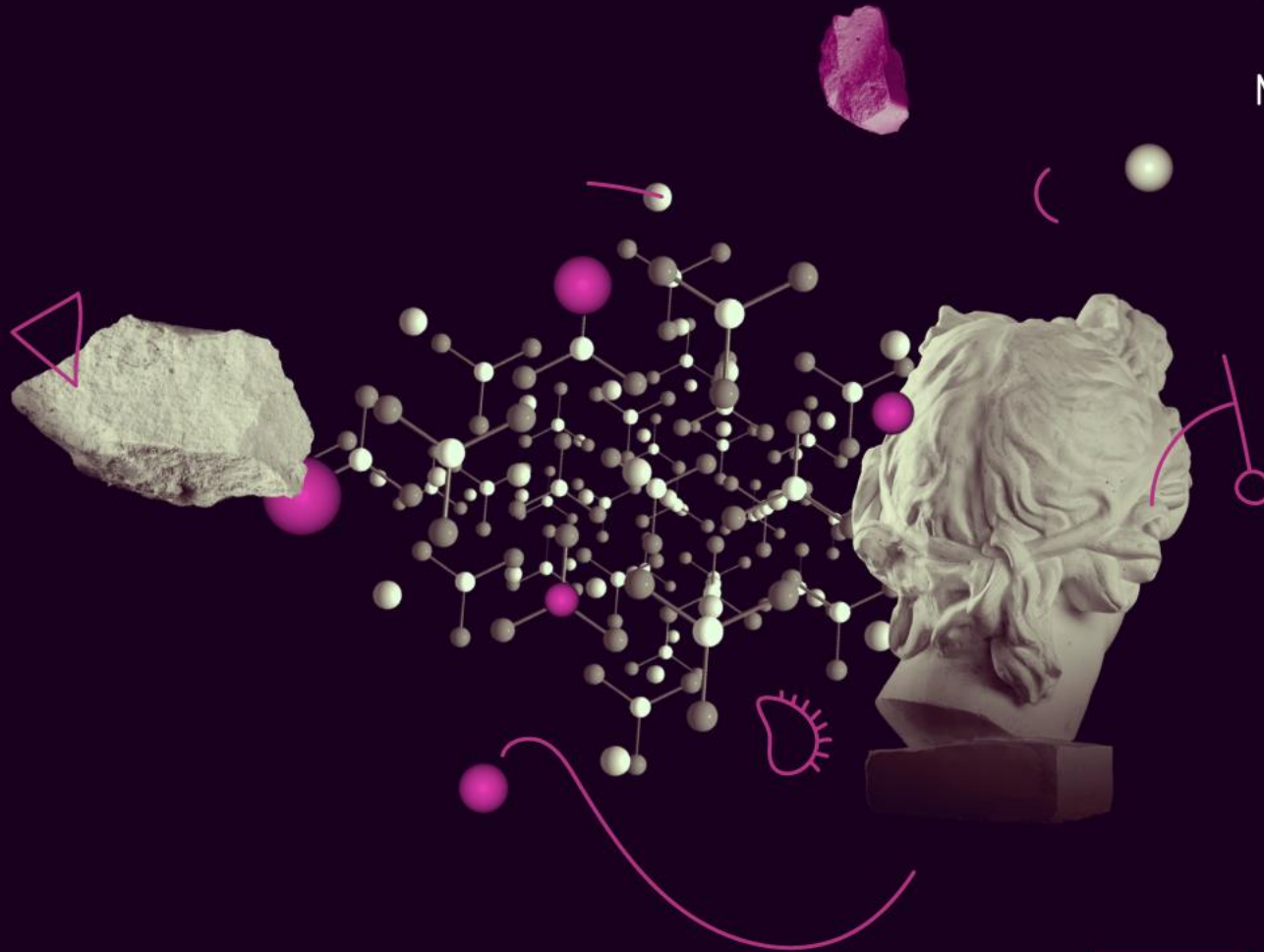




MSCA

Marie Skłodowska-Curie Actions

Developing talents, advancing research



MSCA COFUND 2022 Call UKRO Information Event Session 1: Overview and Eligibility Rules

25 October 2022

Dr. Manuel Gómez Herrero

Directorate-General for Education, Youth, Sport and Culture
Unit C2. Marie Skłodowska-Curie Actions

Marie Skłodowska-
Curie Actions

Marie Skłodowska-Curie Actions (MSCA) key features

- **Support the mobility, training** (including transferable skills) **and career development of researchers from all over the world** through excellent doctorates, postdoctoral fellowships and collaborative projects
- Stimulate **international, inter-sectoral and interdisciplinary cooperation**
- For researchers at **every stage** of their career
- Promote **attractive working and employment conditions** (financing rate of up to 100%, Charter and Code)
- Support excellent research in all domains (**bottom-up**)
- Open to all types of organisations. Participation of **non-academic sector** strongly encouraged, especially industry and SMEs
- Impacting **researcher careers, organisations, structures and the ERA**

MSCA in Horizon 2020: key figures (2014-2020)

+65,000

Researchers,
including 25,000
PhD candidates

50 % of all third
countries'
participations in H2020

37% of researchers
from outside of the EU

42%

Female
researchers

+1,000

Doctoral
programmes

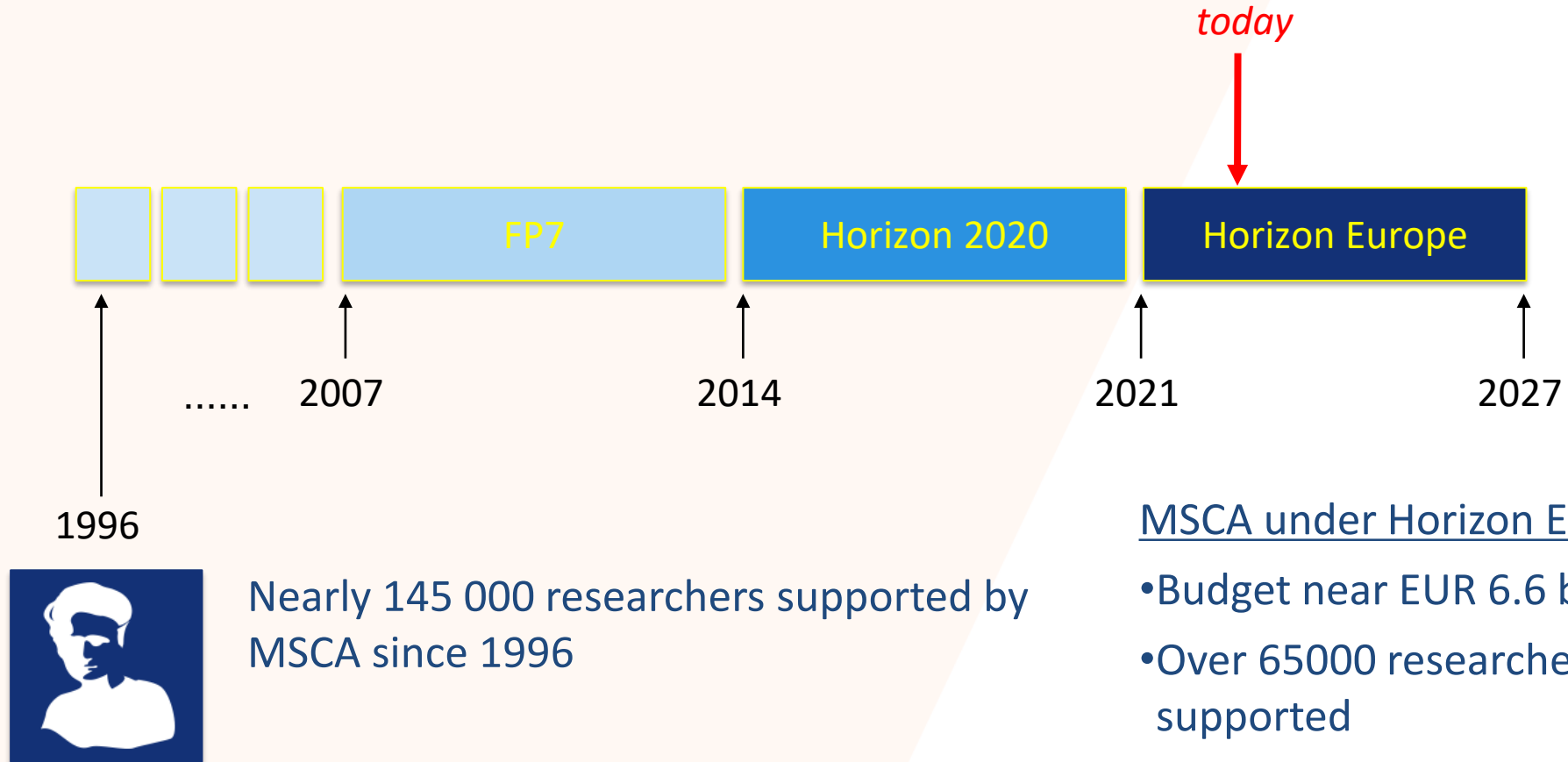
Over 5000

Companies
supported

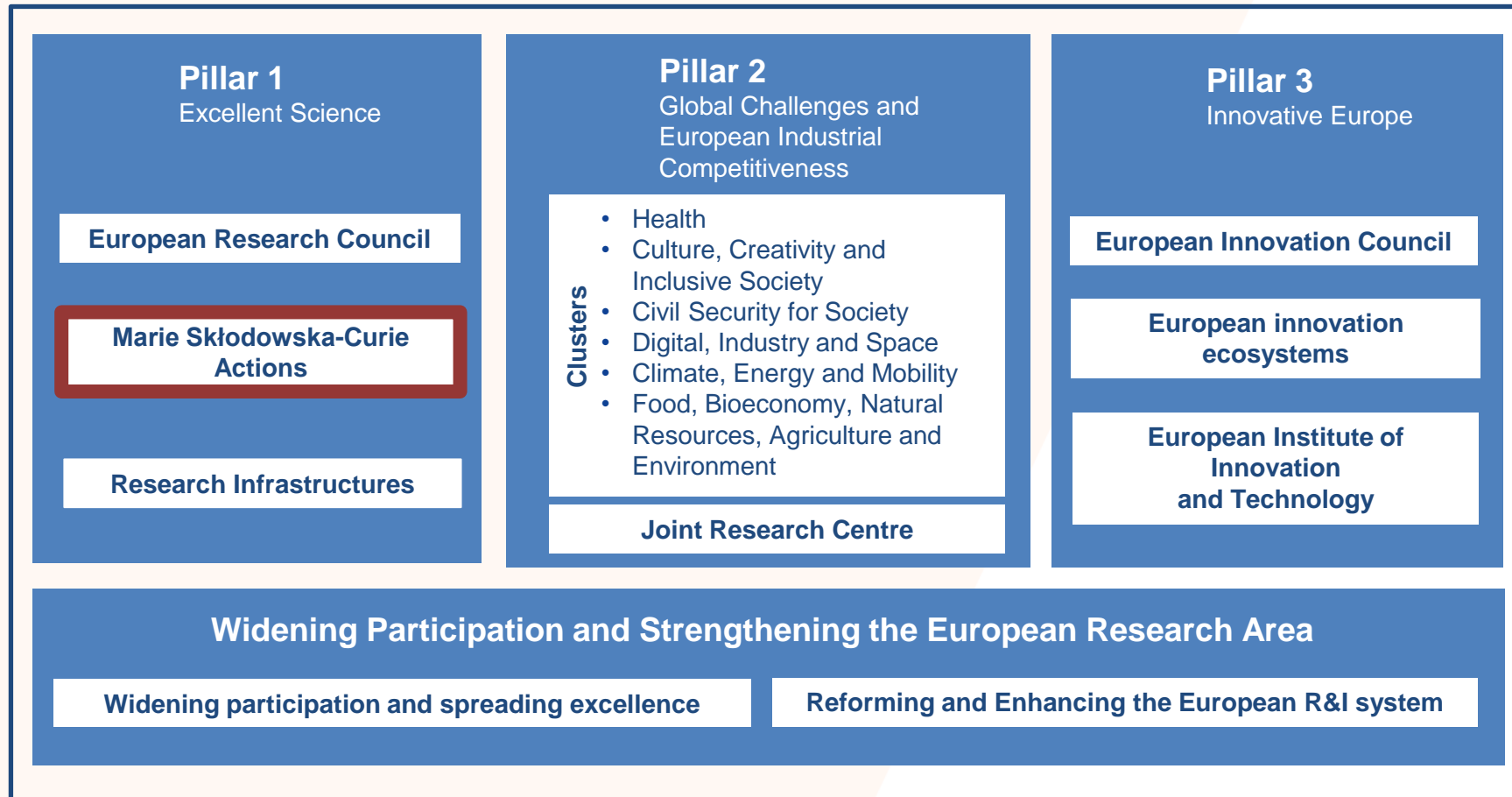
6.5 billion €

Under Horizon
2020

Marie Skłodowska-Curie Actions (MSCA) (1996-2021)



The Horizon Europe programme



Excellent Science (Pillar 1): reinforcing and extending the excellence of the Union's science base

MSCA budget under Horizon Europe: EUR 6.6 billion

Policy objectives of MSCA (Horizon Europe regulation)

- **Equip researchers with new knowledge and skills** through mobility and exposure across borders, sectors and disciplines
- **Enhance training and career development** systems
- Structure and **improve** institutional and national **recruitment**, taking into account the **Charter and Code**
- **Help laying foundations of Europe's excellent research**, contributing to boosting jobs, growth and investment and solving current and future societal challenges

Supervision of researchers

- Good supervision is crucial for successful research
- In line with the Charter and Code, MSCA beneficiaries must ensure adequate supervision or mentoring and appropriate career guidance.
- Since 2019, discussions with stakeholders to identify and address challenges and needs in this area
- All MSCA-funded projects are encouraged to follow the recommendations outlined in the [MSCA Guidelines for supervision](#):
 - Set of recommendations addressed to MSCA beneficiaries, institutions, supervisors and fellows
 - The guidelines are neither prescriptive nor exhaustive and should be adopted on a best-effort basis
- Quality of the supervision in Excellence award criterion for DN, PF and COFUND

Support for researchers at risk

- EU support: Information provision, Coordination of national efforts, Policy instruments, Funding instruments
- [Euraxess science4refugees](#): internships, part-time and full-time jobs, access to European Research Community, information and support
- MSCA WP: projects are encouraged to facilitate access by researchers at risk, through tailored support and career services, including job search assistance
- MSCA [Guidelines on the inclusion of researchers at risk](#)
 - Developed by the European Commission with the help of the [Inspireurope](#) project
 - MSCA beneficiaries encouraged to consider these guidelines on a best-effort basis.
 - Most of the recommendations go beyond the MSCA, and may well be implemented by the higher education community more generally
 - Who are researchers at risk?
 - Why supporting researchers at risk is important?
 - How you can support researchers at risk. Best practises and recommendations
 - Where to find more information
- Calls MSCA Researchers at Risk 2021 and MSCA4Ukraine Fellowships

Towards a greener MSCA. MSCA and the Green Deal

WP: The MSCA will significantly contribute to **promote sustainable research** in line with the European Green Deal, the United Nation's 2030 Agenda and the Sustainable Development Goals

MSCA is a bottom-up programme with a tangible impact at policy level by setting standards and driving structural change. Projects should address environmental issues

IMPLEMENTATION - Greener MSCA projects through:

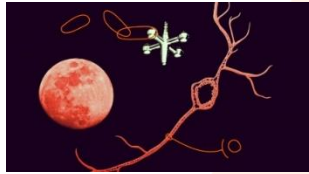
- [MSCA Green Charter](#) for beneficiaries and participants (encouraged in Work Programme)
- Environmental reporting at final report stage
- Guidance material on the MSCA website

CONTENT – Dissemination & valorisation of project results through:

- MSCA newsletter and social media
- CORDIS platform
- Horizon Results Platform & Horizon Results Booster
- Thematic cluster events, surveys etc.

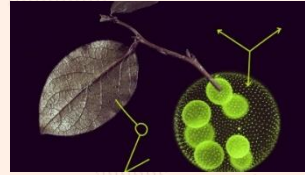
The MSCA have 5 main actions

Overall message in Horizon Europe:
continuation



Doctoral Networks

implement doctoral programmes (including joint doctorates and industrial doctorates) **by international partnerships** of organisations from different sectors. They train highly-skilled doctoral candidates, stimulate their creativity, enhance their innovation capacities and boost their employability in the long-term.

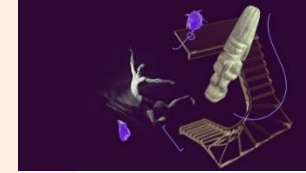


Postdoctoral Fellowships

support researchers' careers and foster excellence in research and innovation. Researchers holding a PhD can carry out their research activities, acquire new skills and develop their careers abroad, whilst developing competences in non-academic sectors and working within interdisciplinary teams.

Staff Exchanges

encourage short-term international and inter-sectoral exchanges of research and innovation staff through sustainable, collaborative projects in Europe and beyond. By doing so, they enhance knowledge and skills transfer and increase organisations' research and innovation capacities.



MSCA and Citizens

brings research and researchers closer to children, families and the public at large through the European Researchers' Night - the annual research communication and promotion event taking place at the end of September across EU Member States and Horizon Europe Associated Countries.



COFUND

co-finances regional, national and international doctoral and postdoctoral programmes for researchers' training and career development. The COFUND action spreads MSCA's best practices by setting high standards and excellent working conditions, and boosts training and international, interdisciplinary and inter-sectoral mobility.



[Home | Marie Skłodowska-Curie Actions \(europa.eu\)](#)



MSCA COFUND



- **Mono-beneficiary action to co-fund** new or existing national, regional, institutional schemes for **doctoral** training and **postdoctoral** fellowships
- **Focus**
 - Spread **best practices** of the MSCA by promoting **high standards** in the recruitment process and **excellent working conditions**
 - Introduce **sustainable structuring effects**, by promoting excellent and sustainable research training
 - Encourage **synergies** with Cohesion policy funds as well as the Recovery and Resilience Facility. Bottom-up, but programmes could focus on specific **disciplines**, notably when based on RIS³.
- **Target groups**
 - **Doctoral candidates**, i.e. researchers without a doctoral degree at the deadline of the co-funded programme's call; mandatory enrolment in a doctoral programme
 - **Postdoctoral researchers**, i.e. researchers with a doctoral degree at the deadline of the co-funded programme's call
 - Each application can only cover one of the two types of programmes (doctoral/postdoctoral).
- **Who applies?**
 - **Single legal entity** established in an EU Member State or HE Associated country
 - A minimum of three researchers must be recruited.

MSCA COFUND



- **Career Development Plan**

- To be jointly established by the supervisor and each recruited researcher upon recruitment. Revised (and updated where needed) within 18 months

- **Co-funding**

- Max **10 M€** per beneficiary per call (unchanged)
- The EU contribution covers **minimum remuneration** and can be used more **flexibly**

- **Duration**

- **Programme:** max. 60 months (unchanged)
- **Fellowship:** min 3 months
- **Secondments:** up to 1/3 of the fellowship duration

- Introduction of an MSCA Cofund **Seal of Excellence** for applications scoring $\geq 85\%$

- **Call:**

- **2022:** 11 Oct 2022 – 9 Feb 2023; 95 M€

MSCA COFUND other general features



- Researchers **must be recruited** under an employment **contract** or equivalent, with full social security coverage. **Exemptions** apply, with prior agreement of the granting authority.
- When an employment contract cannot be provided, the researcher may be recruited under a '**fixed-amount fellowship**'. In this case, the COFUND **allowance will be halved** and the beneficiary must ensure that the researcher enjoys minimum social security coverage.
- Researchers should be employed **full-time**. The rates apply to full-time basis. Researchers may, in agreement with the supervisor and beneficiary and with prior approval by the granting authority, implement their project on a **part-time basis**. Part-time work due to **professional reasons** only for postdoctoral researchers.
- In cases of part-time work, researchers must dedicate at least **50%** of their working time to the MSCA action. The beneficiary should report costs as pro rata of the applicable contributions.
- Applicants must specify in their proposal the total cost of their proposed programme and in particular the **amounts** that will be provided **for the benefit of the researchers** and for the organisation(s) that will implement the programme. This information will be needed to evaluate the adequateness of employment and working conditions of the researchers



MSCA COFUND other general features

- Researchers **must comply with the mobility rule**: they must not have resided or carried out their main activity in the country of the recruiting beneficiary or implementing partner for more than **12 months in the 36 months** immediately before the deadline of the co-funded programme's call.
- Researchers can be of **any nationality**. Limitations regarding the researchers' origin and destination should be avoided.
- Researchers in **Postdoctoral Programmes** in third countries:
 - Must be nationals or long-term residents of an EU **MS or AC**.
 - Should carry out a mandatory **return** period of 12 months at the beneficiary or implementing partner. Secondments cannot take place during this mandatory return period. A maximum of 3 months can be spent at the start of the action at the beneficiary (or any other organisation).
- Researchers who are already permanently employed by the organisation hosting them cannot be funded by COFUND.



Participating organisations in MSCA COFUND

- **COFUND** is a **monobeneficiary action**. Applications must be submitted by a single entity.
- **Beneficiary**: takes complete responsibility for the proper implementation of the proposed programme. It **funds or manages** Doctoral or Postdoctoral **Programmes**. It can do it on its own or in conjunction with associated and/or implementing **partners**.
- **Implementing partners**: third parties **implementing the MSCA COFUND programme by recruiting researchers**. They can **receive financial support from the beneficiary**
- **Associated partners**: **participate** in the action (e.g. providing training or secondments).

Role in the programme	Training and/or Hosting of Seconded Researchers	Recruitment of researchers	Sign the GA Directly Claim costs	Established in
Beneficiary	Yes	Yes	Yes	EU MS or AC
Implementing Partner	Yes	Yes	No	EU MS, AC or TC eligible for funding
Associated Partner	Yes	No	No	Anywhere in the world

- All participating organisations can be from the **academic or non-academic** sector.
- When partners are involved, the signature of a **partnership agreement** is strongly encouraged.
- **Letter of commitment** required for associated and implementing partners (identified at proposal stage).

MSCA COFUND – Unit contributions



Contributions for recruited researchers and institutional contributions Per person-month

	COFUND allowance	Long-term leave allowance (if applicable)	Special needs allowance (if applicable)
Doctoral Programmes	EUR 2 800	EUR 2 800 x % covered by the beneficiary	Requested unit ¹ x (1/number of months)
Postdoctoral Programmes	EUR 3 980	EUR 3 980 x % covered by the beneficiary	Requested unit ¹ x (1/number of months)

¹The pre-defined categories are as follows: EUR 3 000, EUR 4 500, EUR 6 000, EUR 9 500, EUR 13 000, EUR 18 500, EUR 27 500, EUR 35 500, EUR 47 500 and EUR 60 000.

Minimum remuneration applies:

EUR 2 800 for Doctoral researcher, EUR 3 980 for Postdoctoral researcher

Funding scheme and synergies in COFUND in practice



HORIZON 2020

EU contribution: specific researcher unit cost and institutional unit cost

- ESIF cannot be used to cover living allowance or management costs (since they are already supported by H2020)
- **OTHER COST ITEMS** may be funded through ESIF or other non-H2020 EU programmes



HORIZON EUROPE

COFUND ALLOWANCE. “Flexible” EU contribution that can be used to support **any cost items** of the programme (for the researcher or institutional).

- Individual cost items may be **fully or partially funded through other resources** including EU programmes other than Horizon 2020 or Horizon Europe, such as the **Cohesion policy funds**, provided that double-funding is avoided.

COFUND offers flexibility but remember!:

Researchers to be recruited under an employment contract or equivalent
Minimum remuneration to the researchers to be ensured always!!

MSCA Call Calendar 2022

	Action	Opening	Deadline	Budget (EUR million)
open	Doctoral Networks	12 May 2022	15 November 2022	428.28
closed	Postdoctoral Fellowships	12 May 2022	14 September 2022	257
open	Staff Exchanges	6 October 2022	8 March 2023	77.5
open	COFUND	11 October 2022	9 February 2023	95

Your National Contact Points (NCP) can help you

United Kingdom's NCPs

- Branwen Hide
- UKRO
- Rue de la Science 14, 3rd Floor - 1040 Brussels
- Tel: +44 (0)792 607 2030
- mariecurie-uk@ukro.ac.uk

- Anne Nierobisch
- UKRO
- Rue de la Science 14, 3rd Floor - 1040 Brussels
- Tel: +44 (0) 7808 878443
- mariecurie-uk@ukro.ac.uk

National Contact Points: <https://ec.europa.eu/info/funding-tenders/opportunities/portal/screen/support/ncp>

<https://msca-net.eu/> <https://twitter.com/mscanetwork>

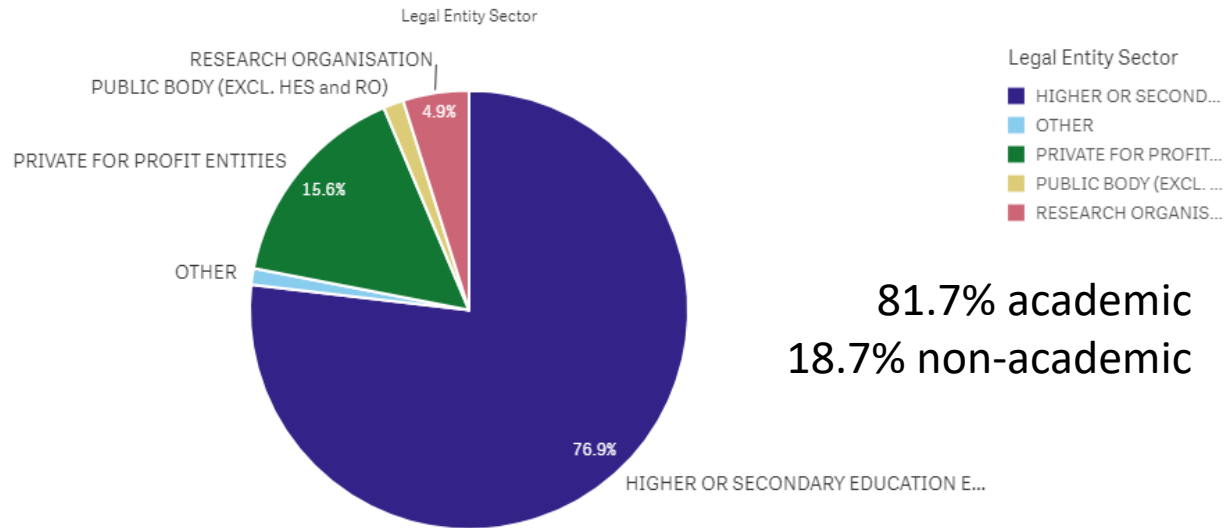
United Kingdom and the MSCA in Horizon 2020

MSCA Action	Organisations Participations	Distinct Organisations	Total Budget Awarded, M€	Projects	Outgoing Researchers	Incoming Researchers
IF	2.622	132	518.2	2.557	452	2.459
ITN	1.778	678	526.3	740	329	1.978
RISE	573	241	69.4	294	854	1.701
COFUND	87	70	40.7	35	159	209
NIGHT	64	28	3.9	28	0	0
Totals	5.124	878	1158.5	3.654	1.794	6.347

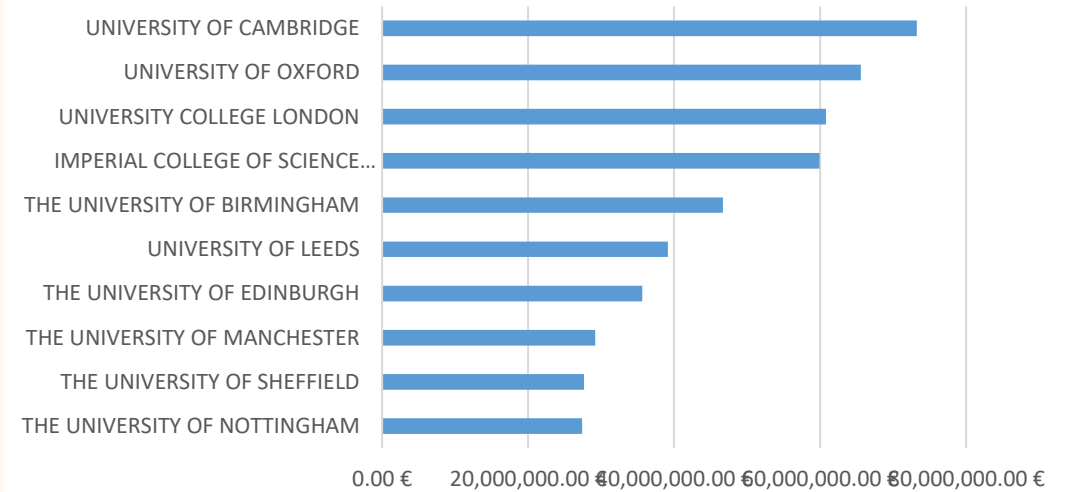
United Kingdom is number 1 by proposals submitted, participations and budget awarded
 22799 proposals
 3654 projects
 Success rate of participations 15%

United Kingdom and the MSCA in Horizon 2020

Distinct Organisation Participations by Legal Entity Sector

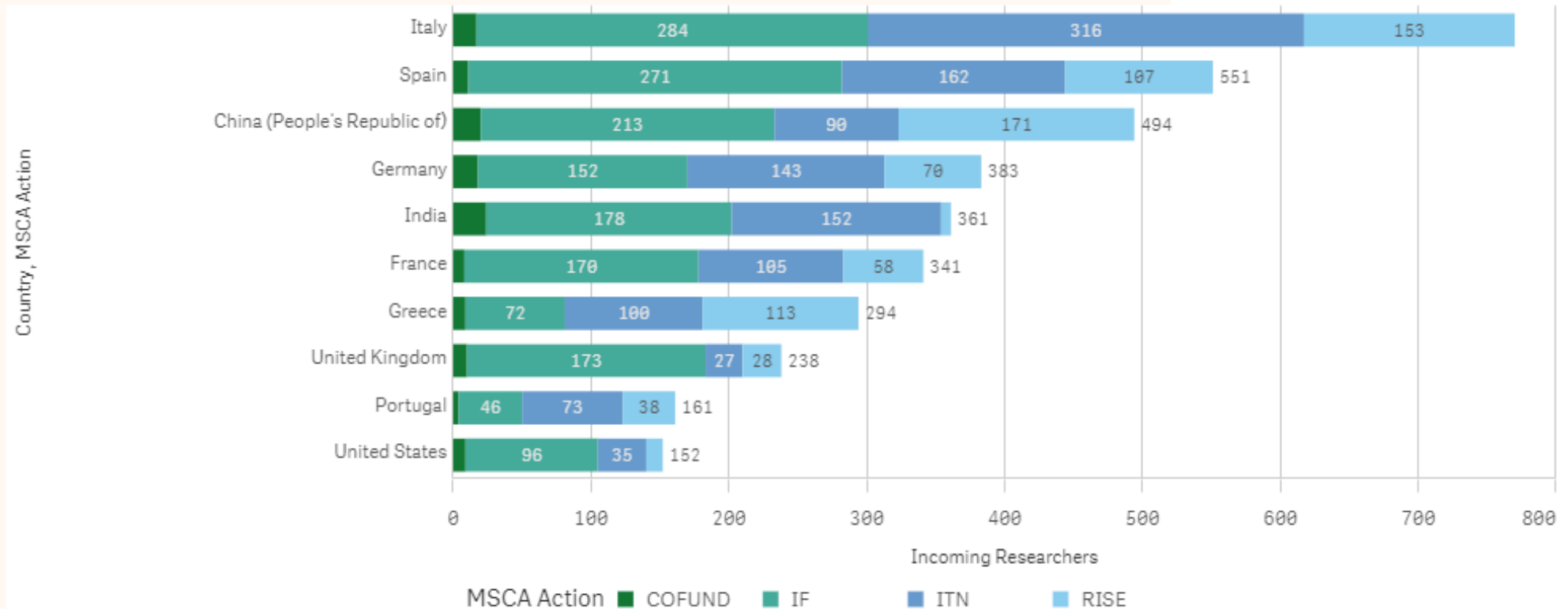


Top 10 organisations. Total budget awarded



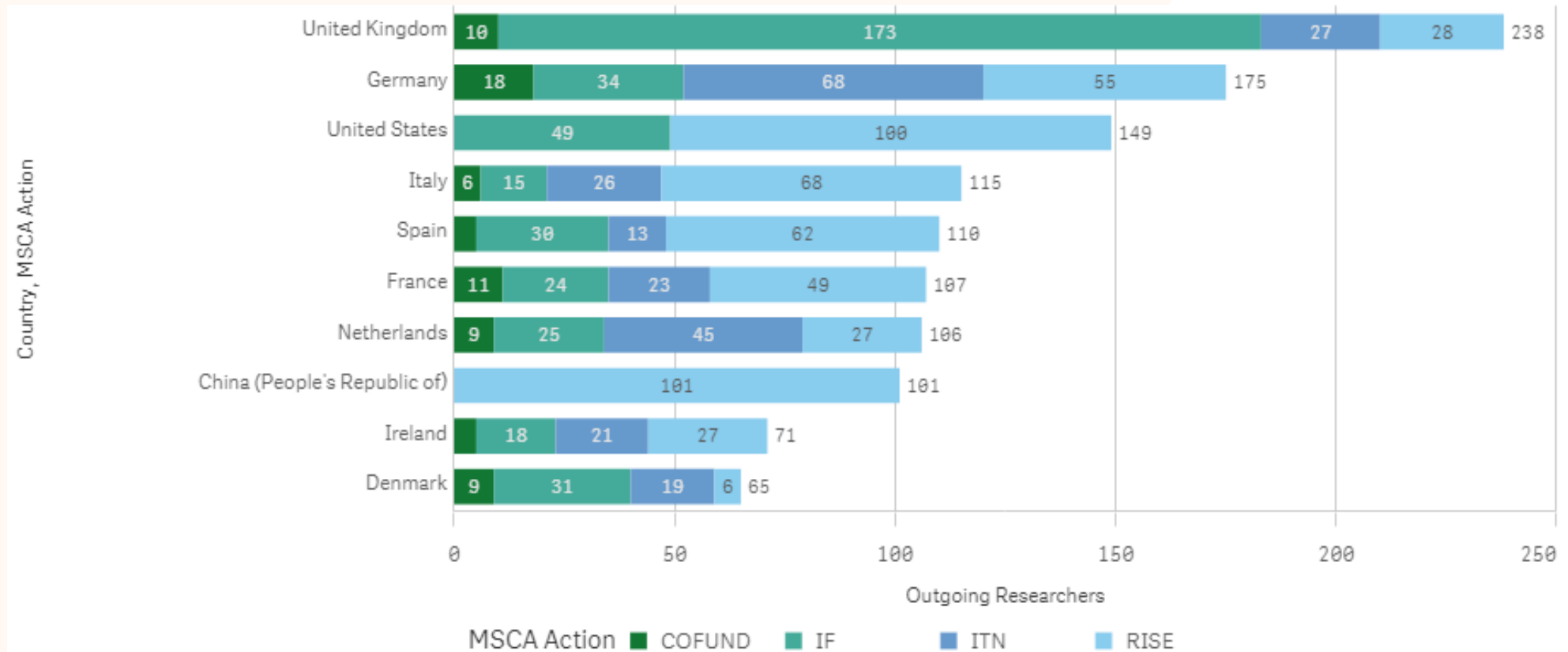
United Kingdom and the MSCA in Horizon 2020

Mobility pattern-incoming. Fellows going to UK, grouped by their nationality. Top 10 nationalities



United Kingdom and the MSCA in Horizon 2020

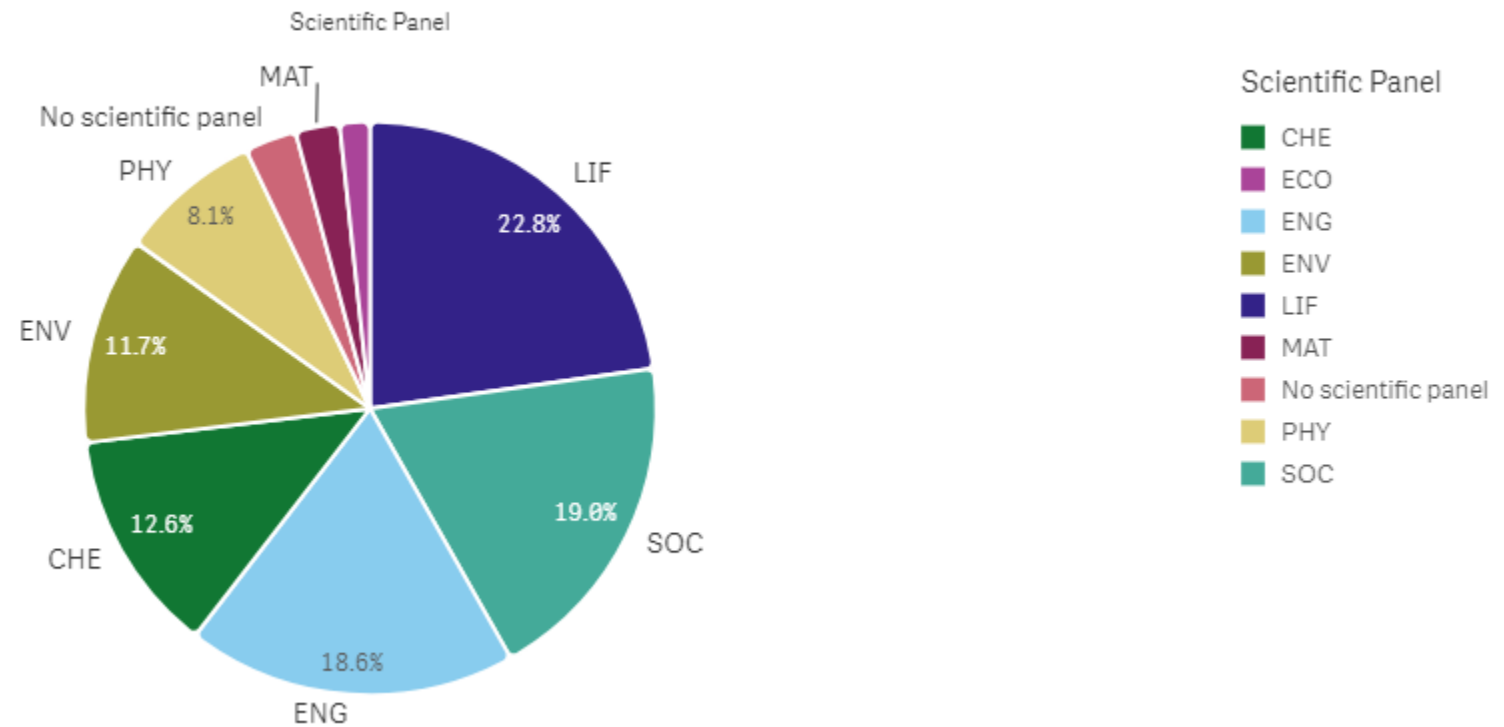
Mobility pattern-outgoing. UK fellows, grouped by country of destination. Top 10 countries



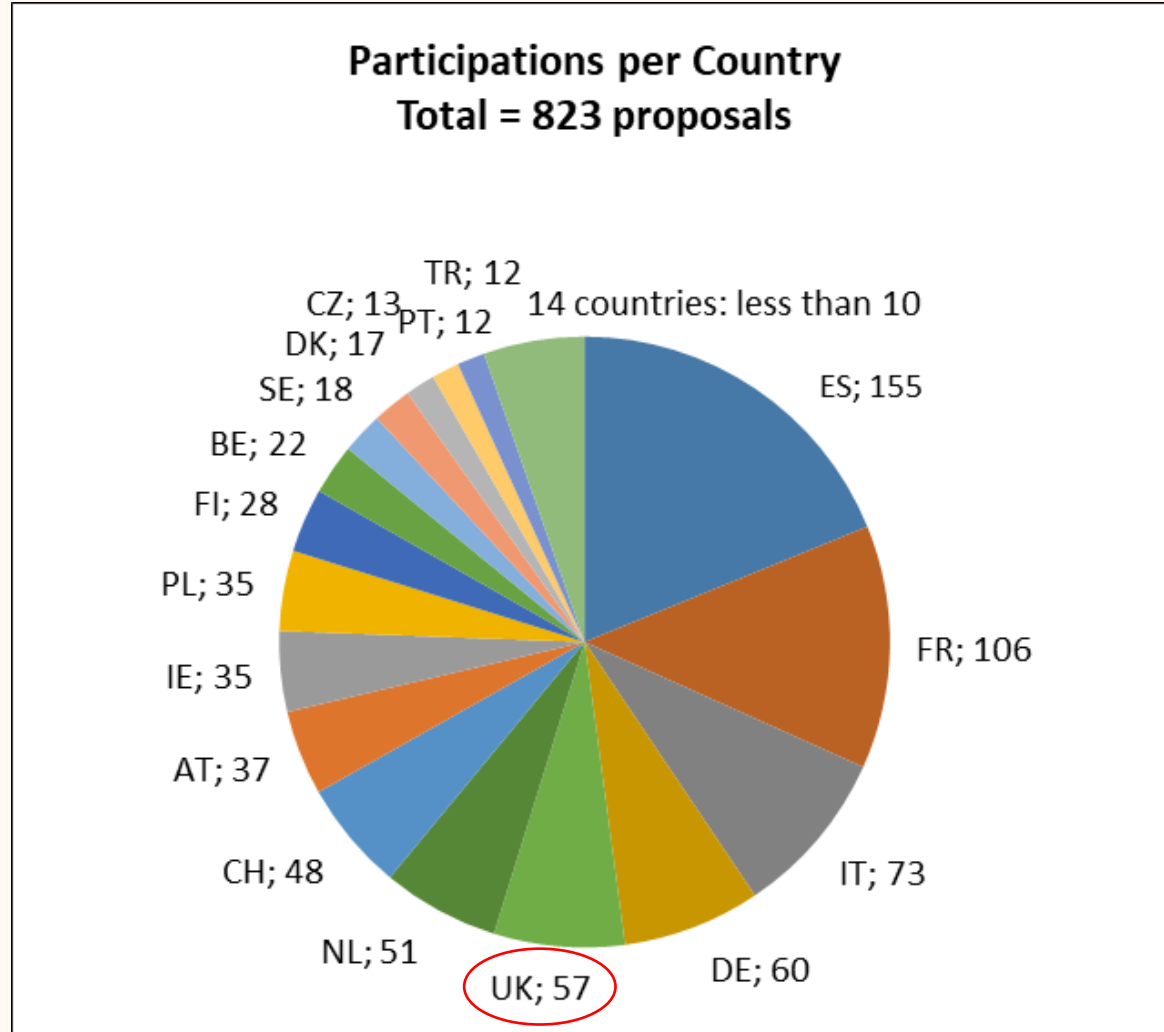
United Kingdom and the MSCA in Horizon 2020

Project distribution by scientific panel

Contracted Projects by Scientific Panel



United Kingdom in MSCA COFUND-Horizon 2020



Total figures:

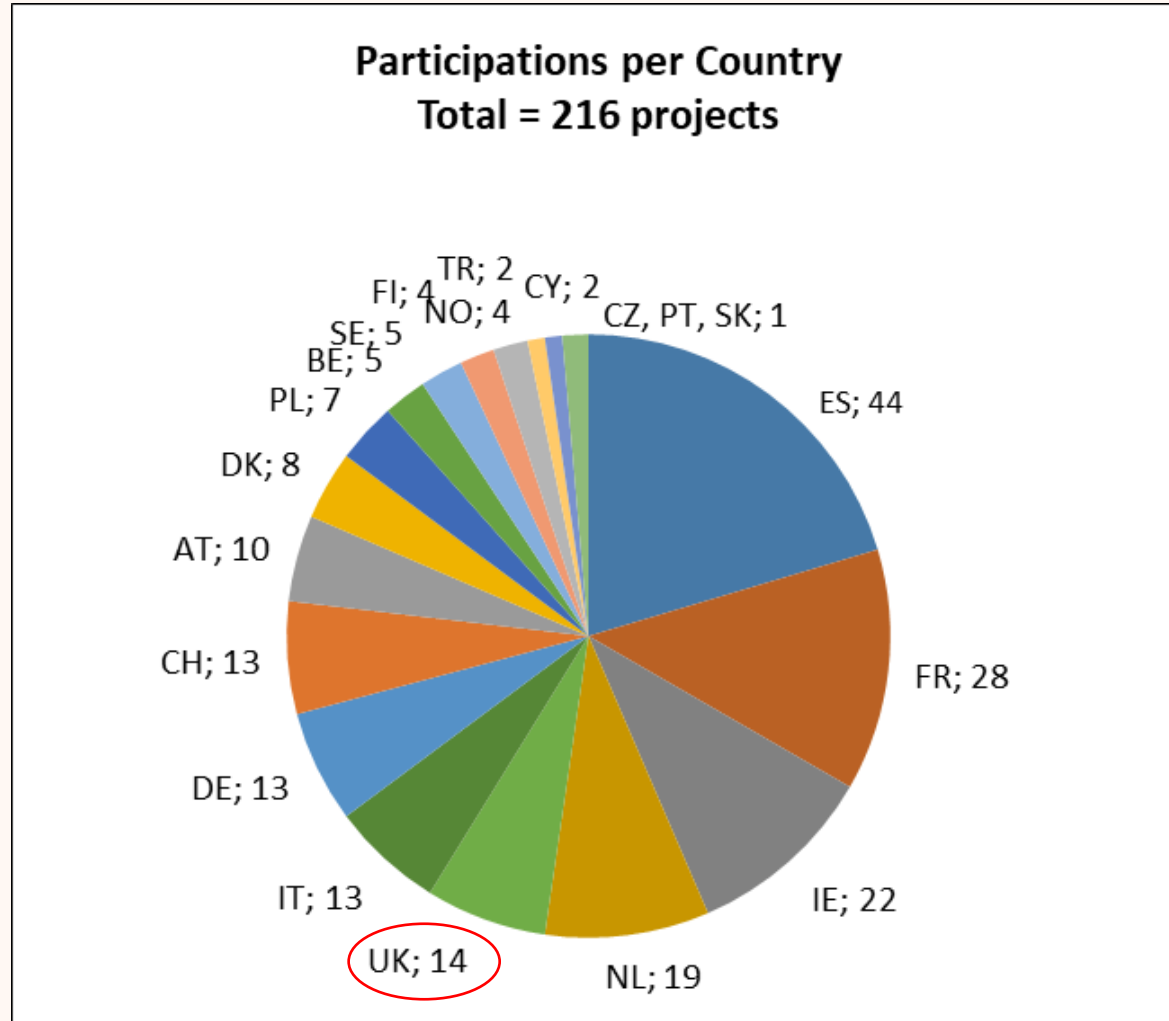
823 proposals: 355 DP, 468 FP

United Kingdom :

57 proposals with UK beneficiary:

34 DP, 23 FP

United Kingdom in MSCA COFUND-Horizon 2020



Total figures:

216 projects: 99 DP, 116 FP

United Kingdom :

14 projects with UK beneficiary:

7 DP, 7 FP

Success rate: 24.6%

(Avg. success rate: 26.2%)

11 HES, 1 REC, 1 OTH, 1 PUB

Links

- **Marie Skłodowska-Curie Actions Website**
https://ec.europa.eu/research/mariecurieactions/node_en
- **Factsheet, Marie Skłodowska-Curie actions, 2021-2027**
<https://data.europa.eu/doi/10.2766/128028>
- **Funding and Tenders Portal (applications, documents, partner search)**
<https://ec.europa.eu/info/funding-tenders/opportunities/portal/screen/programmes/horizon>
- **Horizon Europe MSCA Work Programme 2021-2022**
https://ec.europa.eu/info/funding-tenders/opportunities/docs/2021-2027/horizon/wp-call/2021-2022/wp-2-msca-actions_horizon-2021-2022_en.pdf
- **Horizon Europe Programme Guide**
https://ec.europa.eu/info/funding-tenders/opportunities/docs/2021-2027/horizon/guidance/programme-guide_horizon_en.pdf
- **Euraxess (PhD and postdoctoral vacancies, more information)**
<https://euraxess.ec.europa.eu/>
- **European Charter and Code for Researchers**
<https://euraxess.ec.europa.eu/jobs/charter-code-researchers>
- **EU Principles on Innovative Doctoral Training**
https://euraxess.ec.europa.eu/sites/default/files/policy_library/principles_for_innovative_doctoral_training.pdf
- **MSCA Guidelines on Supervision**
<https://data.europa.eu/doi/10.2766/508311>
- **MSCA Guidelines for Inclusion of Researchers at Risk**
<https://op.europa.eu/en/publication-detail/-/publication/b73cad36-6144-11ec-9c6c-01aa75ed71a1>
- **MSCA Green Charter**
<https://data.europa.eu/doi/10.2766/720690>
- **COFUND 2021 Call Beneficiaries' Day**
<https://academy.europa.eu/local/euacademy/pages/course/event-overview.php?title=cofund-call-2021-beneficiaries-day>
- **MCAA (Marie Curie Alumni association) // United Kingdom Chapter**
<https://www.mariecuriealumni.eu> // <https://www.mariecuriealumni.eu/groups/united-kingdom-chapter>
- **National Contact Points**
<https://ec.europa.eu/info/funding-tenders/opportunities/portal/screen/support/ncp>
- **Horizon Dashboard**
<https://ec.europa.eu/info/funding-tenders/opportunities/portal/screen/opportunities/horizon-dashboard>
- **Become an Expert**
<https://ec.europa.eu/info/funding-tenders/opportunities/portal/screen/work-as-an-expert>
- **Contact:** EAC-UNITE-C2@ec.europa.eu



@MSCActions



@Marie.Curie.Actions



European
Commission

Nothing in life is to be feared, it is only to be understood. Now is the time to understand more, so that we may fear less.

Marie Skłodowska-Curie



Thank you!

MSCA: Developing talents, advancing research

<https://marie-sklodowska-curie-actions.ec.europa.eu/>

#MSCA #HorizonEU

@MSCActions



© European Union 2021

Unless otherwise noted the reuse of this presentation is authorised under the [CC BY 4.0](https://creativecommons.org/licenses/by/4.0/) license. For any use or reproduction of elements that are not owned by the EU, permission may need to be sought directly from the respective right holders. Image sources: [iStockphoto.com/Unsplash](https://www.istockphoto.com/)

