



MSCA

Marie Skłodowska-Curie Actions

Developing talents, advancing research



Staff Exchanges

MSCA Staff Exchanges 2022 Call

Information Event - Session 3: Participation of the Non-academic Sector in MSCA Staff Exchanges

Sandra Pinto Marques

Unit A3

European Research Executive Agency

Marie Skłodowska-Curie Actions



@REA_research, @MSCAactions

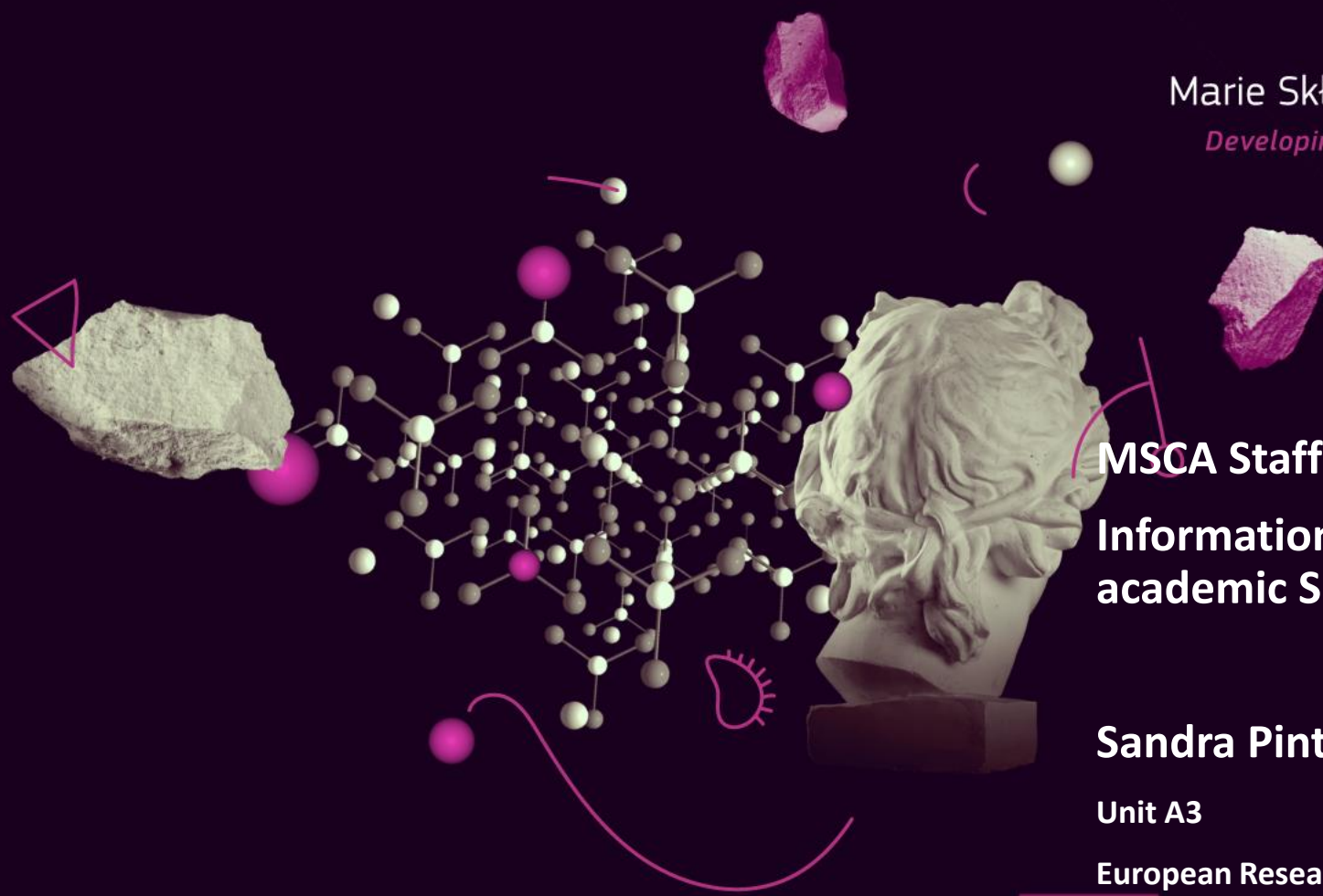


image source: iStockphoto.com

Pillar I: Excellent Science

Reinforcing and extending the excellence of the Union's science base

European Research Council

Frontier research by the best researchers and their teams

€16 billion

Marie Skłodowska Curie Actions

Equipping researchers with new knowledge and skills through mobility and training

€6.6 billion

Research Infrastructures

Integrated and inter-connected world-class research infrastructures

€2.4 billion

Marie Skłodowska-Curie Actions (MSCA)

The MSCA have **5** main actions

Doctoral Networks

implement doctoral programmes (including joint doctorates and industrial doctorates) **by international partnerships** of organisations from different sectors. They train highly-skilled doctoral candidates, stimulate their creativity, enhance their innovation capacities and boost their employability in the long-term.

Postdoctoral Fellowships

support researchers' careers and foster excellence in research and innovation.

Researchers holding a PhD can carry out their research activities, acquire new skills and develop their careers abroad, whilst developing competences in non-academic sectors and working within interdisciplinary teams.

Staff Exchanges

encourage short-term international and inter-sectoral exchanges of research and innovation staff through sustainable, collaborative projects in Europe and beyond. By doing so, they enhance knowledge and skills transfer and increase organisations' research and innovation capacities.

MSCA and Citizens

brings research and researchers closer to children, families and the public at large through the European Researchers' Night - the annual research communication and promotion event taking place at the end of September across EU Member States and Horizon Europe Associated Countries.

COFUND

co-finances regional, national and international doctoral and postdoctoral programmes for researchers' training and career development. The COFUND action spreads MSCA's best practices by setting high standards and excellent working conditions, and boosts training and international, interdisciplinary and inter-sectoral mobility.

European Institute of Innovation and Technology (EIT) MSCA-Staff Exchanges (MSCA SE)



**Synergies between the Marie
Skłodowska-Curie Actions and the
European Institute of Innovation and
Technology**

Horizon Europe strategic plan

Enhance cooperation between :

- **Universities**
- **Scientific communities**
- **Industry**
- **SMEs**
- **Citizens**

SYNERGY: MSCA SE + EIT KIC activities

- **EIT:** Long-term European partnerships - Knowledge and Innovation Communities (KICs) - specific global challenge (e.g. climate change). Currently : eight KICs.
- **SE:** Short-term mobility of staff.

- **KICs' partner organisations -> complementary exchanges under MSCA SE, with partners from within their community and beyond;**
- **Participants fulfil requirements linked to both actions + no double funding.**



Staff Exchanges (SE)

Main features



Objectives



International, inter-sectoral and interdisciplinary mobility of R&I staff (“secondments”)

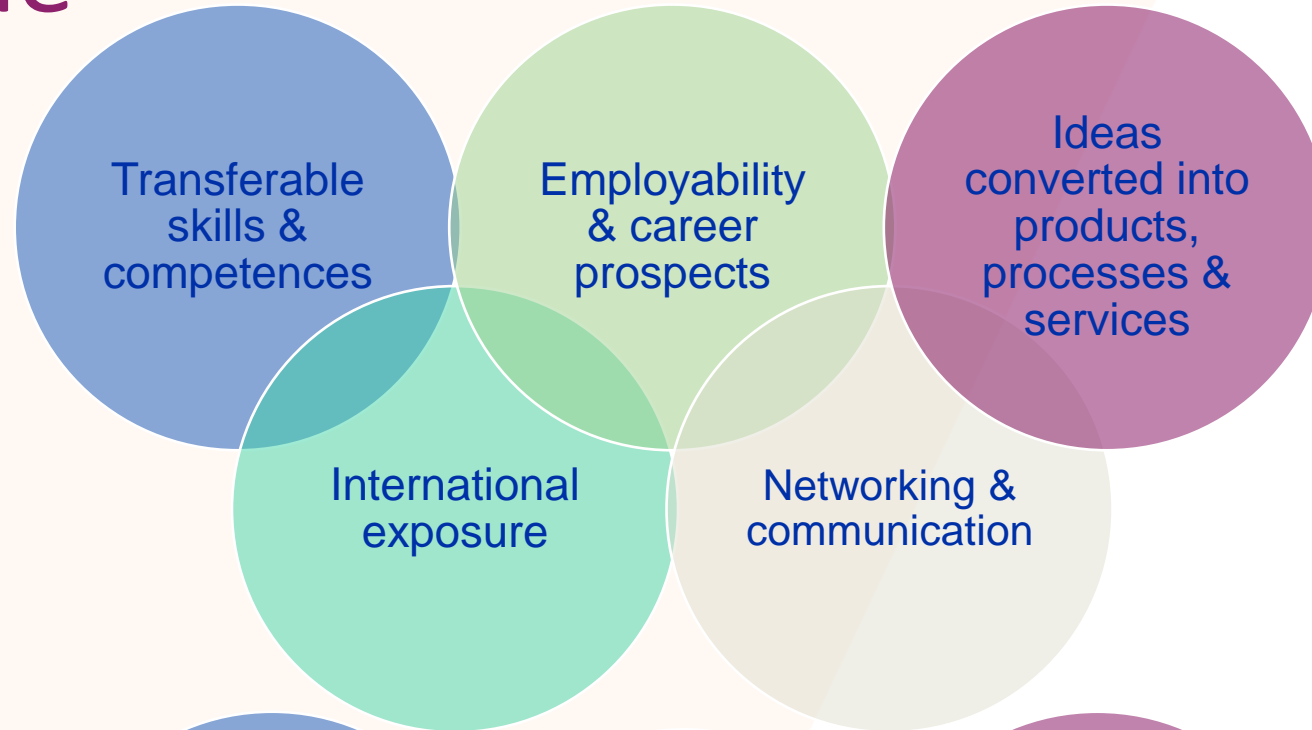
Knowledge transfer between participating organisations

Collaboration between the academic and non-academic sectors (including SMEs)

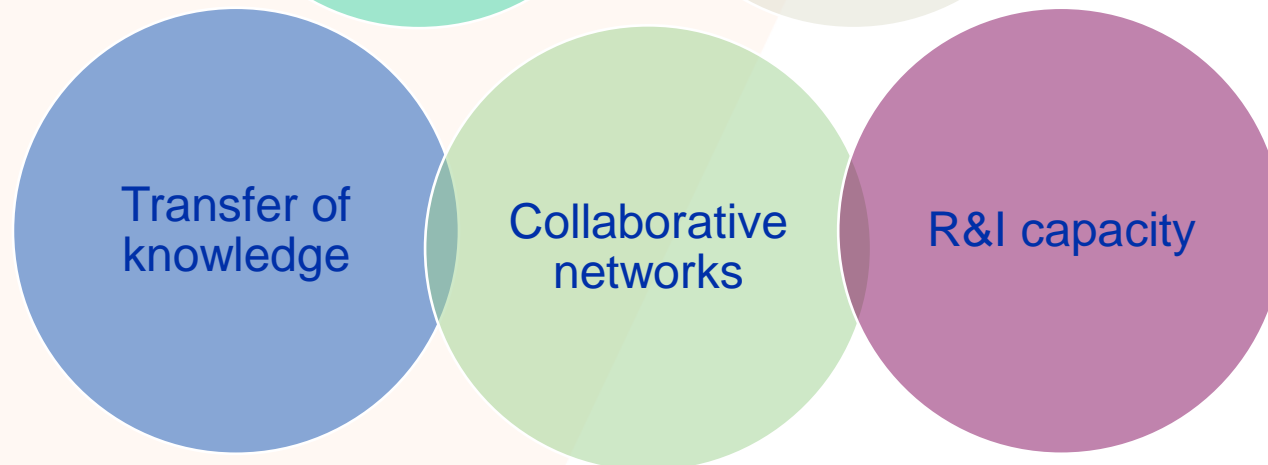
Cooperation across the globe

Added value

Staff members



Organisations

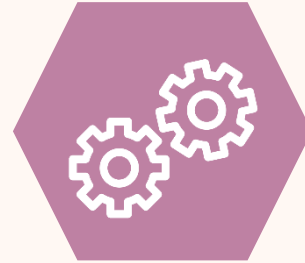


Eligible participants

**Academic sector
(ACAD)**



**Non-academic sector
(NON-ACAD)**



- **Inter-sectoral exchanges are emphasized (ACAD <-> NON-ACAD)**

Same sector exchanges allowed if:

- Third Country involvement
- Member States/ HE Associated Countries
-> interdisciplinary exchanges

Which are the MSCA level 1 keywords?

See:

<https://rea.ec.europa.eu/system/files/2021-10/MSCA%20Keywords.pdf>

Scientific panel : Chemistry (CHE)

Level 1 keywords	Level 2 keywords
C1-Inorganic Chemistry	Catalysis Coordination chemistry Inorganic and nuclear chemistry NMP Non-Metallic Materials & basic processes Organometallic chemistry Radiation and nuclear chemistry
C2-Organic, Polymer and Molecular Chemistry	Carbohydrates Combinatorial chemistry Heterocyclic chemistry Macromolecular chemistry

Academic and non-academic sector definitions



Academic sector

- ✓ public or private higher education establishments
- ✓ public or private non-profit research organisations
- ✓ International European Research Organisations

Non-academic sector

- ✓ any socio-economic actor not included in the academic sector
 - ✓ Including industry, business, SMEs

Consortium composition

Minimum :

- **3 different legal entities** - based in at least **2 different EU Member States (MS)/HE Associated Country (AC)**

E.g.: *Organisation A (Italy) + Organisation B (France) + Organisation C (USA)*

Organisation A (Italy) + Organisation B (France) + Organisation C (Italy)

- If all organisations -> **same sector (ACAD/ NON-ACAD)** -> at least 1 organisation from a **non-associated Third Country (Associated Partner)**

E.g.: *University A (Italy) + University B (France) + University C (USA)*

University A (Italy) + University B (France) + SME C (Italy)

Which are the HE Associated Countries (AC) and Third Countries (TC)?

See:

https://ec.europa.eu/info/funding-tenders/opportunities/docs/2021-2027/common/guidance/list-3rd-country-participation_horizon-euratom_en.pdf

Eligible staff



Seconded staff members



Any type of staff involved in R&I activities (researchers, administrative staff, managerial staff, technical staff)

Researchers at any career stage (from doctoral candidates to postdoctoral researchers)

Actively engaged in research and/or innovation activities for at least **1 month** prior at the sending institution

Each staff member is seconded for a period of **1 to 12 months** (may be split into several stays *)

Staff needs to be devoted **full-time** to the action during the secondment

After the secondment, staff should **return to their sending organisation**

* With one or several beneficiaries or associated partners.

Not applicable to Staff Exchanges

- **Funding not meant to replace salary** -> Category A unit costs meant to contribute to travel, accommodation, subsistence and other costs associated with the secondment/exchange.
- **Funding not based on « real costs »** -> Use of unit costs. One unit = one month of eligible staff.
- **Action does not focus exclusively on scientific deliverables** -> Most important outcome for SE is the secondment/exchange itself.
- **No need to be a doctoral candidate to be seconded** -> research, technical, administrative and managerial staff active in the R&I activities.
- **« country coefficient » is not used** -> One month of eligible staff = 4600 Eur.

Staff Exchanges: Non-academic sector

- **BOTTOM-UP APPROACH** – All research areas and topics.
- **FLEXIBILITY** – Short duration secondments -> up to 12 months.
- **MANY NON-ACADEMIC PARTNERS in SE projects** - Beneficiaries and associated partners.
- **IPR** – Consortium agreement (background, foreground, access rights) – not scrutinized.
- **STRAIGHTFORWARD MANAGEMENT**– Use of unit costs -> triggered by the secondment (sending).
- **ACCESS TO CUTTING EDGE RESEARCH AND EU POLICY INFO**

Exchanges/secondments

"HOSTING"
(receiving seconded staff members)

"SENDING"
(sending staff members from organization)

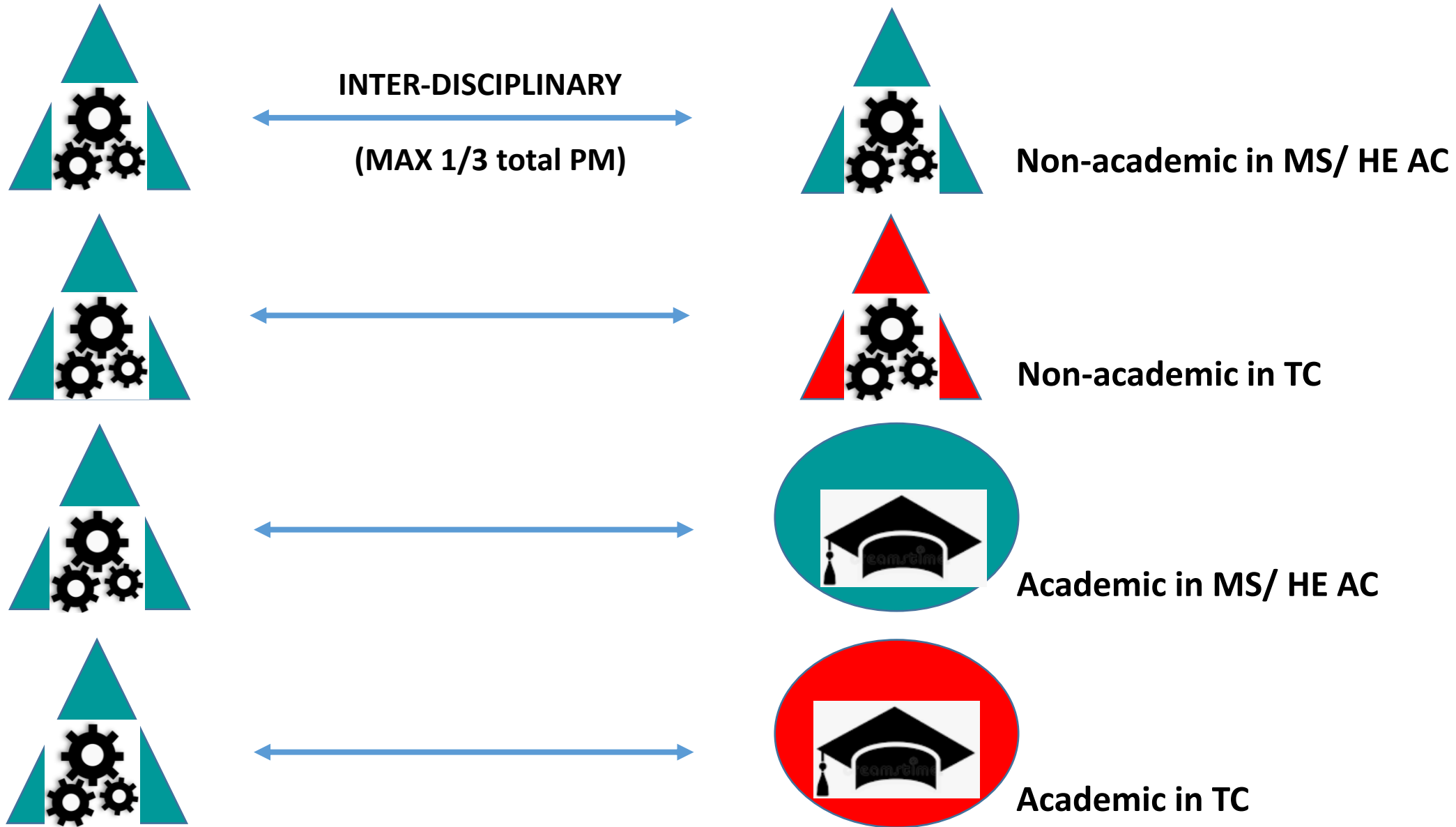
	Academic organisation in MS/AC (1)	Non-academic organisation in MS/AC (2)	Associated Partners eligible for funding	Associated Partners non-eligible for funding
Academic organisation in MS/AC (1)	1/3	✓	✓	✓
Non-academic organisation in MS/AC (2)	✓	1/3	✓	✓
Associated Partners* eligible for funding	✓	✓	✗	✗
Associated Partners non-eligible for funding	✗	✗	✗	✗

1/3 This symbol refers to same sector secondments up to 1/3 of the total implemented secondments funded by the EU as long as they are demonstrated to be interdisciplinary.

* Associated Partners eligible for funding (see List of Participating Countries in Horizon Europe)

Exchanges within the same country are not eligible.
Exchanges between Associated Partners based in TC are not eligible.

EXAMPLES-Secondments / Exchanges



What does Staff Exchanges fund?



Example



13th October 2022



UNITED KINGDOM



Deliverable



UNITED KINGDOM



13th November 2022



Cost Category

▼ A) Costs of seconded staff members

A1) Staff member top-up allowance

2300 Eur

▼ B) Institutional costs

B1) Research, training and networking costs

2300 Eur

B1) Management and indirect costs

Category B-institutional costs

Flexibility applies -> consortium agreement



Key features – summary



DURATION

Max 4 years (48 months)
360 PM per project



SECONDMENTS

1-12 months per staff
Mandatory interdisciplinary
secondments:
same sector, between
MS/AC for max 1/3 PM



UNIT COST

1 month eligible staff
4600€ total
2 categories:

2300€ - Staff allowance
2300€ - Institutional



BUDGET

EU funding
average
75,5 Mio€/call



Staff Exchanges

Proposal submission & evaluation

Present MSCA SE call

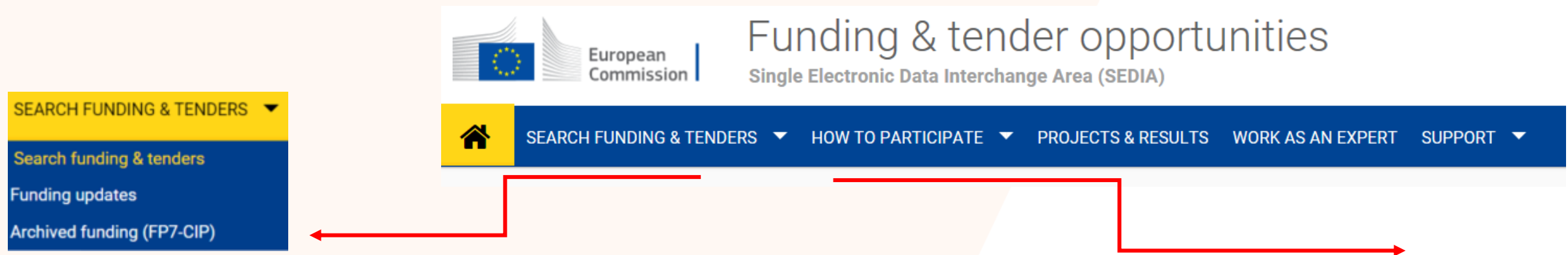
Call	2022	
	Opening Closing	Budget (M€)
Staff Exchanges	06/10/2022 08/03/2023	77,5



~ + 7% more
budget vs
2021

Proposal Submission

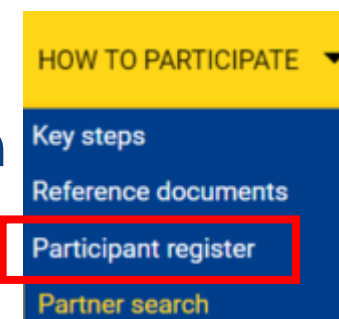
<https://ec.europa.eu/info/funding-tenders/opportunities/portal/>



All calls are published on the **Funding and Tender Opportunities Portal**.
Applications are submitted through the portal:

- **Sign in to the portal (create/use EU login) and register your organisation (get a Participant Identification Code (PIC) number)**
- Find your call
- Find partners

APPLY !





Online Manual

My Area — User account and roles

Grants


Applying for funding

- Find a call
- Find partners
- Register an organisation
- Submit a proposal

MSCA SE 2022 call for proposals

SEARCH FUNDING & TENDERS ▾ HOW TO PARTICIPATE ▾ PROJECTS & RESULTS WORK AS AN EXPERT SUPPORT ▾

Horizon Europe (HORIZON) clear f

Type your Keywords... 

Match whole words only

GRANTS TENDERS

Submission status

Forthcoming Open for submission (2) Closed

Programming period

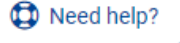


2021 - 2027 (2)

Horizon Europe (HORIZON)


Programme part

Marie Skłodowska-Curie Actions (MSCA)

Funding and tenders (2)

   Sort by:

MSCA Doctoral Networks 2022 HORIZON-MSCA-2022-DN-01-01	<input type="button" value="Grant"/>	
Programme	Horizon Europe (HORIZON)	Status
Type of action	HORIZON TMA MSCA Doctoral Networks, HORIZON TMA MSCA Doctoral Networks - Industrial Doctorates, HORIZON TMA MSCA Doctoral Networks - Joint Doctorates	Deadline model
Opening date	12 May 2022	Deadline date

MSCA Staff Exchanges 2022  HORIZON-MSCA-2022-SE-01-01	<input type="button" value="Grant"/>	
Programme	Horizon Europe (HORIZON)	Status
Type of action	HORIZON TMA MSCA Staff Exchanges	Deadline model
Opening date	06 October 2022	Deadline date


General information

Programme

Horizon Europe Framework Programme (HORIZON)

Call

[MSCA Staff Exchanges 2022 \(HORIZON-MSCA-2022-SE-01\)](#)

 [See budget](#)

Type of action

HORIZON-TMA-MSCA-SE HORIZON TMA MSCA Staff Exchanges

Type of MGA

HORIZON Unit Grant [HORIZON-AG-UN]

Forthcoming

Deadline model

single-stage

Planned opening date

06 October 2022

Deadline date

08 March 2023 17:00:00 Brussels time

Partner search announcements

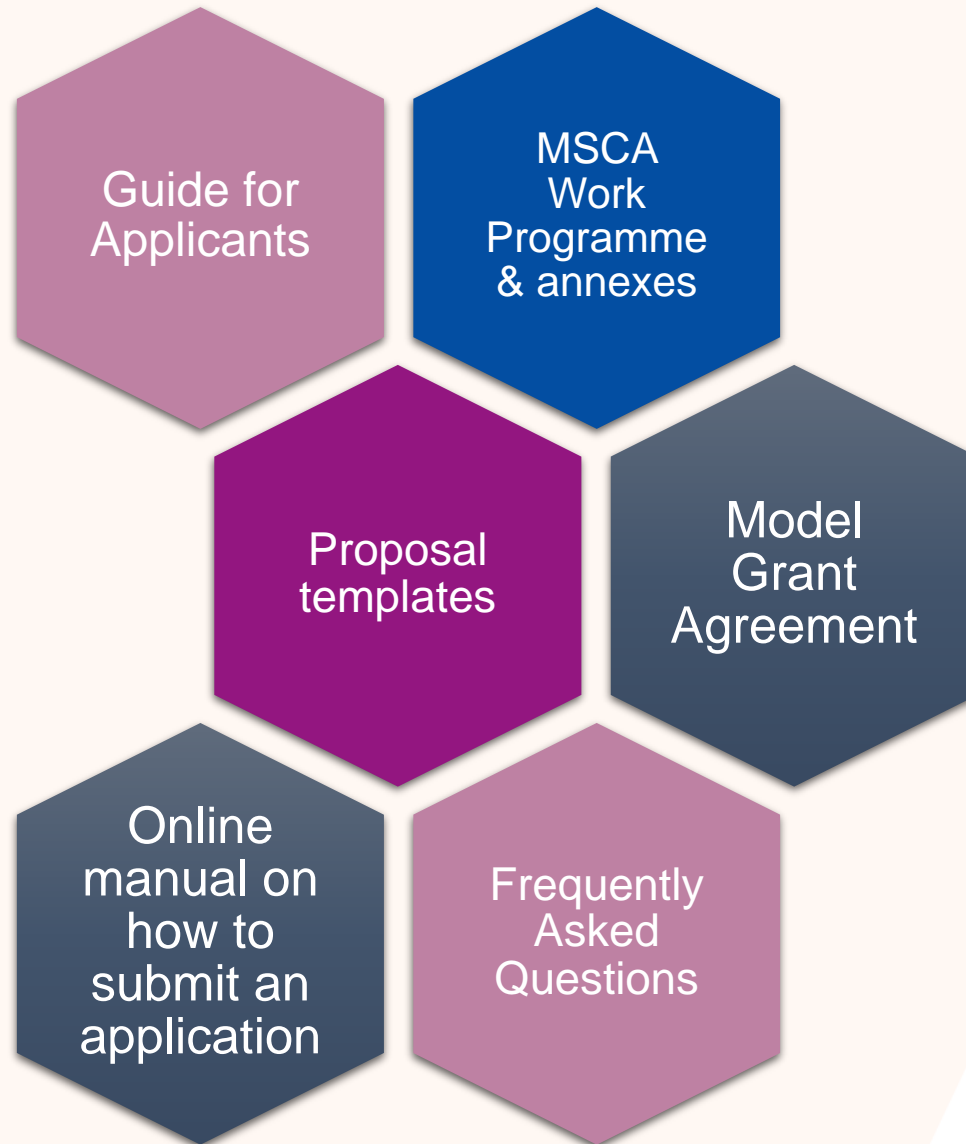
86

Searches of partners to collaborate on this topic

[View / Edit](#)

LEARs, Account Administrators or self-registrants can publish partner requests for open and forthcoming topics after logging into this Portal, as well as any user having an active public Person profile.

Reference Documents



Evaluation criteria

Excellence	Impact	Quality and efficiency of the implementation
Quality and pertinence of the project's research and innovation objectives (and the extent to which they are ambitious, and go beyond the state of the art)	Developing new and lasting research collaborations , achieving transfer of knowledge between participating organisations and contributing to improving research and innovation potential at the European and global level	Quality and effectiveness of the work plan , assessment of risks , and appropriateness of the effort assigned to work packages
Soundness of the proposed methodology (including interdisciplinary approaches, consideration of the gender dimension and other diversity aspects if relevant for the research project, and the quality and appropriateness of open science practices)	Credibility of the measures to enhance the career perspectives of staff members and contribution to their skills development	Quality, capacity and role of each participant, including hosting arrangements and extent to which the consortium as a whole brings together the necessary expertise
Quality of the proposed interaction between the participating organisations in light of the research and innovation objectives	Suitability and quality of the measures to maximise expected outcomes and impacts , as set out in the dissemination and exploitation plan, including communication activities	
	The magnitude and importance of the project's contribution to the expected scientific, societal and economic impacts	
50%	30%	20%



Tips and tricks

Closely follow the call requirements

Be in line with the action's objectives and expected outcomes

Follow available guidelines

Use the structure provided in the template and address all the evaluation criteria

Highlight the EU dimension

Show that your proposal addresses EU policy priorities and/or societal challenges

Get a second opinion

Have your proposal proof-read by a colleague and pre-screened by your NCP

Sustainability of collaboration

Describe the benefits of cooperation and how they can go beyond this project

**Contact your
National Contact Point
(NCP)**

https://cordis.europa.eu/search/en

HOME

RESULTS PACKS

RESEARCH*EU MAGAZINES

PODCASTS & NEWS

PROJECTS & RESULTS

ABOUT US

SEARCH

LOG IN

 Save search

 My saved searches

 Download search results

 RSS feed

 My booklet

MSCA Staff Exchanges 2022 (HORIZON-MSCA-2022-SE-01)



Help



Edit query

Filters





Last year's information session-recording available

INFO DAYS

Marie Skłodowska-Curie Actions Staff Exchanges info session

The info session about Marie Skłodowska-Curie Actions [Staff Exchanges](#) EN | ... of 19 November was designed for **potential applicants**. It provided guidance on the application process and the consortium composition. It gave details on funding availability.

 Research staff

 19 November 2021, 10:30 to 19 November 2021, 12:30

- [Event presentations](#) EN | ...
- [Event schedule](#) EN | ...
- [Recording of the event](#)

<https://webcast.ec.europa.eu/horizon-msca-se-2021-info-session>

SAVE THE DATE -> next INFO DAY -> 7 December 2022



European
Commission

Funding & tender opportunities

Single Electronic Data Interchange Area (SEDIA)



SEARCH FUNDING & TENDERS ▼

HOW TO PARTICIPATE ▼

PROJECTS & RESULTS

WORK AS AN EXPERT

SUPPORT ▼

Tuesday 23 November 2021 between 7:30 and 8:10 CET:



- **All documents will be unavailable** in the Grants and Audits Management Services, in the Participant Register Services and in "My Expert Area". Please refrain from launching any document-related process, since these will not work and will have to be restored by the Service Desk

We apologise for any inconvenience this may cause.

Work as an expert

The European Union Institutions appoint external experts to assist in the evaluation of grant applications, projects and tenders, and to provide opinions and advice in specific cases.

<https://ec.europa.eu/info/funding-tenders/opportunities/portal/screen/work-as-an-expert>

Thank you!

European Research Executive Agency

#MSCA #HorizonEU

 **@REA_research @MSCAactions**

https://rea.ec.europa.eu/funding-and-grants/horizon-europe-marie-sklodowska-curie-actions_en



© European Union 2021

Unless otherwise noted the reuse of this presentation is authorised under the [CC BY 4.0](https://creativecommons.org/licenses/by/4.0/) license. For any use or reproduction of elements that are not owned by the EU, permission may need to be sought directly from the respective right holders. Image sources: iStockphoto.com/Unsplash

